

**VGF Polyclonal Antibody**  
**Catalog # AP73058****Specification****VGF Polyclonal Antibody - Product Information**

Application	<b>WB</b>
Primary Accession	<a href="#">O15240</a>
Reactivity	<b>Human, Mouse, Rat</b>
Host	<b>Rabbit</b>
Clonality	<b>Polyclonal</b>

**VGF Polyclonal Antibody - Additional Information****Gene ID** 7425**Other Names**

VGF; Neurosecretory protein VGF

**Dilution**

WB~~Western Blot: 1/500 - 1/2000.

Immunohistochemistry: 1/100 - 1/300.

ELISA: 1/40000. Not yet tested in other applications.

**Format**

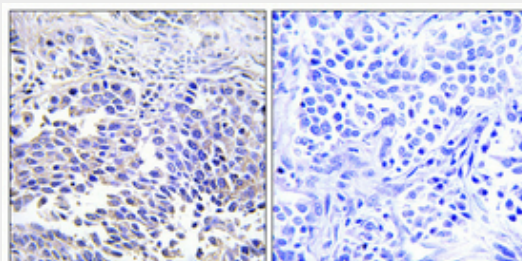
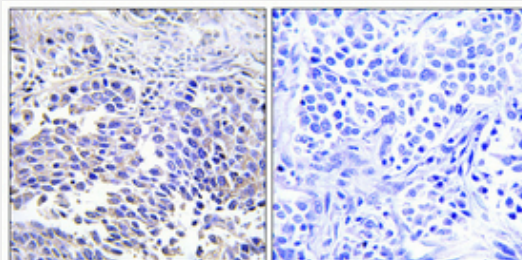
Liquid in PBS containing 50% glycerol, 0.5% BSA and 0.02% sodium azide.

**Storage Conditions**

-20°C

**VGF Polyclonal Antibody - Protein Information****Name** VGF**Function**

[Neurosecretory protein VGF]: Secreted polypeptide that is packaged and proteolytically processed by prohormone convertases PCSK1 and PCSK2 in a cell-type-specific manner (By similarity). VGF and peptides derived from its processing play many roles in neurogenesis and neuroplasticity associated with learning, memory, depression and chronic pain (By similarity).

**Cellular Location****VGF Polyclonal Antibody - Background**

May be involved in the regulation of cell-cell interactions or in synaptogenesis during the maturation of the nervous system.

[Neurosecretory protein VGF]: Secreted.  
Cytoplasmic vesicle, secretory vesicle.  
Note=Stored in secretory vesicles and then  
secreted, NERP peptides colocalize with  
vasopressin in the storage granules of  
hypothalamus

**Tissue Location**

Central and peripheral nervous systems,  
synthesized exclusively in neuronal and  
neuroendocrine cells

**VGF Polyclonal Antibody - Protocols**

Provided below are standard protocols that you  
may find useful for product applications.

- [Western Blot](#)
- [Blocking Peptides](#)
- [Dot Blot](#)
- [Immunohistochemistry](#)
- [Immunofluorescence](#)
- [Immunoprecipitation](#)
- [Flow Cytometry](#)
- [Cell Culture](#)