

CAPN9 Antibody (N-term)
Purified Rabbit Polyclonal Antibody (Pab)
Catalog # AP7310a

Specification

CAPN9 Antibody (N-term) - Product Information

Application	WB,E
Primary Accession	O14815
Reactivity	Human
Host	Rabbit
Clonality	Polyclonal
Isotype	Rabbit Ig
Calculated MW	79097
Antigen Region	49-78

CAPN9 Antibody (N-term) - Additional Information

Gene ID 10753

Other Names

Calpain-9, 3422-, Digestive tract-specific calpain, New calpain 4, nCL-4, Protein CG36, CAPN9, NCL4

Target/Specificity

This CAPN9 antibody is generated from rabbits immunized with a KLH conjugated synthetic peptide between 49-78 amino acids from the N-terminal region of human CAPN9.

Dilution

WB~~1:1000

Format

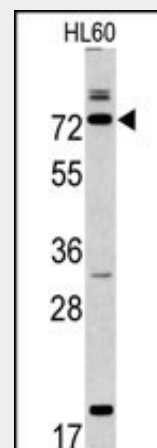
Purified polyclonal antibody supplied in PBS with 0.09% (W/V) sodium azide. This antibody is prepared by Saturated Ammonium Sulfate (SAS) precipitation followed by dialysis against PBS.

Storage

Maintain refrigerated at 2-8°C for up to 2 weeks. For long term storage store at -20°C in small aliquots to prevent freeze-thaw cycles.

Precautions

CAPN9 Antibody (N-term) is for research use only and not for use in diagnostic or



Western blot analysis of CAPN9 antibody (N-term) (Cat.#AP7310a) in HL60 cell line lysates (35ug/lane). CAPN9 (arrow) was detected using the purified Pab.

CAPN9 Antibody (N-term) - Background

CAPN9 has been implicated in neurodegenerative processes, as their activation can be triggered by calcium influx and oxidative stress. The protein is expressed predominantly in stomach and small intestine and may have specialized functions in the digestive tract. This protein is thought to be associated with gastric cancer.

CAPN9 Antibody (N-term) - References

- Huang,Y. and Wang,K.K. Trends Mol Med 7 (8), 355-362 (2001)
- Lee,H.J., Tomioka,S. Arch. Biochem. Biophys. 362 (1), 22-31 (1999)
- Lee,H.J., Sorimachi,H. Biol. Chem. 379 (2), 175-183 (1998)
- Suzuki,K., Sorimachi,H. Biol. Chem. Hoppe-Seyler 376 (9), 523-529 (1995)

therapeutic procedures.

CAPN9 Antibody (N-term) - Protein Information

Name CAPN9

Synonyms NCL4

Function

Calcium-regulated non-lysosomal
thiol-protease.

Tissue Location

Expressed predominantly in stomach.

CAPN9 Antibody (N-term) - Protocols

Provided below are standard protocols that you
may find useful for product applications.

- [Western Blot](#)
- [Blocking Peptides](#)
- [Dot Blot](#)
- [Immunohistochemistry](#)
- [Immunofluorescence](#)
- [Immunoprecipitation](#)
- [Flow Cytometry](#)
- [Cell Culture](#)