

NCX1 Polyclonal Antibody

Catalog # AP73286

Specification

NCX1 Polyclonal Antibody - Product Information

Application	WB
Primary Accession	P32418
Reactivity	Human, Mouse, Rat
Host	Rabbit
Clonality	Polyclonal

NCX1 Polyclonal Antibody - Additional Information

Gene ID 6546

Other Names

SLC8A1; CNC; NCX1; Sodium/calcium exchanger 1; Na(+)/Ca(2+)-exchange protein 1

Dilution

WB~~Western Blot: 1/500 - 1/2000. ELISA: 1/5000. Not yet tested in other applications.

Format

Liquid in PBS containing 50% glycerol, 0.5% BSA and 0.02% sodium azide.

Storage Conditions

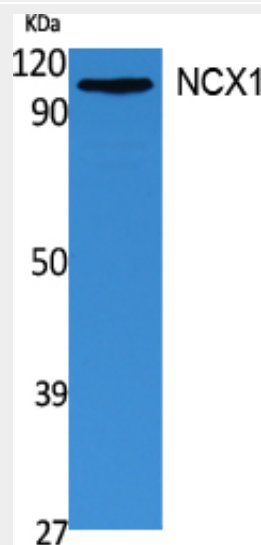
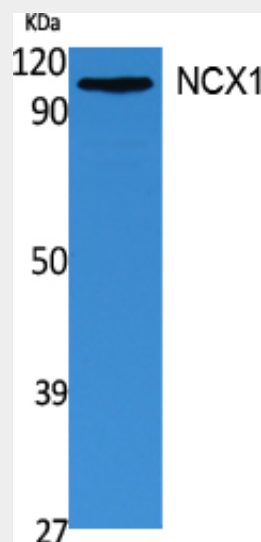
-20°C

NCX1 Polyclonal Antibody - Protein Information

Name SLC8A1

Function

Mediates the exchange of one Ca(2+) ion against three to four Na(+) ions across the cell membrane, and thereby contributes to the regulation of cytoplasmic Ca(2+) levels and Ca(2+)-dependent cellular processes (PubMed:1374913, PubMed:11241183, PubMed:1374913, PubMed:11241183)



NCX1 Polyclonal Antibody - Background

Mediates the exchange of one Ca(2+) ion against three to four Na(+) ions across the cell membrane, and thereby contributes to the regulation of cytoplasmic Ca(2+) levels and Ca(2+)-dependent cellular processes (PubMed:1374913, PubMed:11241183,

tations/1476165" target="_blank">1476165). Contributes to Ca(2+) transport during excitation-contraction coupling in muscle. In a first phase, voltage-gated channels mediate the rapid increase of cytoplasmic Ca(2+) levels due to release of Ca(2+) stores from the endoplasmic reticulum. SLC8A1 mediates the export of Ca(2+) from the cell during the next phase, so that cytoplasmic Ca(2+) levels rapidly return to baseline. Required for normal embryonic heart development and the onset of heart contractions.

Cellular Location

Cell membrane; Multi-pass membrane protein

Tissue Location

Detected primarily in heart and at lower levels in brain (PubMed:1374913). Expressed in cardiac sarcolemma, brain, kidney, liver, pancreas, skeletal muscle, placenta and lung (PubMed:1476165)

PubMed:1476165). Contributes to Ca(2+) transport during excitation-contraction coupling in muscle. In a first phase, voltage-gated channels mediate the rapid increase of cytoplasmic Ca(2+) levels due to release of Ca(2+) stores from the endoplasmic reticulum. SLC8A1 mediates the export of Ca(2+) from the cell during the next phase, so that cytoplasmic Ca(2+) levels rapidly return to baseline. Required for normal embryonic heart development and the onset of heart contractions.

NCX1 Polyclonal Antibody - Protocols

Provided below are standard protocols that you may find useful for product applications.

- [Western Blot](#)
- [Blocking Peptides](#)
- [Dot Blot](#)
- [Immunohistochemistry](#)
- [Immunofluorescence](#)
- [Immunoprecipitation](#)
- [Flow Cytometry](#)
- [Cell Culture](#)