

Contactin 1 Polyclonal Antibody

Catalog # AP73305

Specification

Contactin 1 Polyclonal Antibody - Product Information

Application	WB
Primary Accession	Q12860
Reactivity	Human, Mouse, Rat
Host	Rabbit
Clonality	Polyclonal

Contactin 1 Polyclonal Antibody - Additional Information

Gene ID 1272

Other Names

CNTN1; Contactin-1; Glycoprotein gp135; Neural cell surface protein F3

Dilution

WB~~Western Blot: 1/500 - 1/2000. ELISA: 1/20000. Not yet tested in other applications.

Format

Liquid in PBS containing 50% glycerol, 0.5% BSA and 0.02% sodium azide.

Storage Conditions

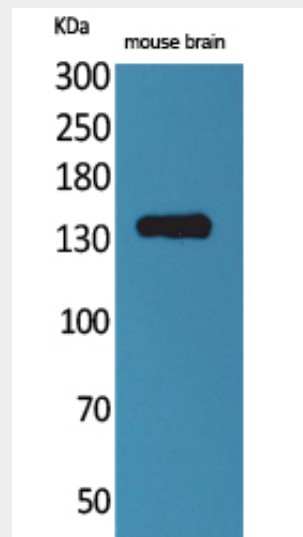
-20°C

Contactin 1 Polyclonal Antibody - Protein Information

Name CNTN1

Function

Contactins mediate cell surface interactions during nervous system development. Involved in the formation of paranodal axo-glial junctions in myelinated peripheral nerves and in the signaling between axons and myelinating glial cells via its association with CNTNAP1. Participates in oligodendrocytes generation by acting as a ligand of NOTCH1. Its association with NOTCH1 promotes NOTCH1 activation



Contactin 1 Polyclonal Antibody - Background

Contactins mediate cell surface interactions during nervous system development. Involved in the formation of paranodal axo-glial junctions in myelinated peripheral nerves and in the signaling between axons and myelinating glial cells via its association with CNTNAP1. Participates in oligodendrocytes generation by acting as a ligand of NOTCH1. Its association with NOTCH1 promotes NOTCH1 activation through the released notch intracellular domain (NICD) and subsequent translocation to the nucleus. Interaction with TNR induces a repulsion of neurons and an inhibition of neurite outgrowth (By similarity).

through the released notch intracellular domain (NICD) and subsequent translocation to the nucleus. Interaction with TNR induces a repulsion of neurons and an inhibition of neurite outgrowth (By similarity).

Cellular Location

[Isoform 1]: Cell membrane; Lipid-anchor, GPI- anchor; Extracellular side

Tissue Location

Strongly expressed in brain and in neuroblastoma and retinoblastoma cell lines. Lower levels of expression in lung, pancreas, kidney and skeletal muscle.

**Contactin 1 Polyclonal Antibody -
Protocols**

Provided below are standard protocols that you may find useful for product applications.

- [Western Blot](#)
- [Blocking Peptides](#)
- [Dot Blot](#)
- [Immunohistochemistry](#)
- [Immunofluorescence](#)
- [Immunoprecipitation](#)
- [Flow Cytometry](#)
- [Cell Culture](#)