

BF Antibody (Center)
Purified Rabbit Polyclonal Antibody (Pab)
Catalog # AP7357c

Specification

BF Antibody (Center) - Product Information

Application	WB, IHC-P,E
Primary Accession	P00751
Reactivity	Human
Host	Rabbit
Clonality	Polyclonal
Isotype	Rabbit Ig
Calculated MW	85533
Antigen Region	395-422

BF Antibody (Center) - Additional Information

Gene ID 629

Other Names

Complement factor B, C3/C5 convertase, Glycine-rich beta glycoprotein, GBG, PBF2, Properdin factor B, Complement factor B Ba fragment, Complement factor B Bb fragment, CFB, BF, BFD

Target/Specificity

This BF antibody is generated from rabbits immunized with a KLH conjugated synthetic peptide between 395-422 amino acids from the Central region of human BF.

Dilution

WB~~1:1000

IHC-P~~1:50~100

Format

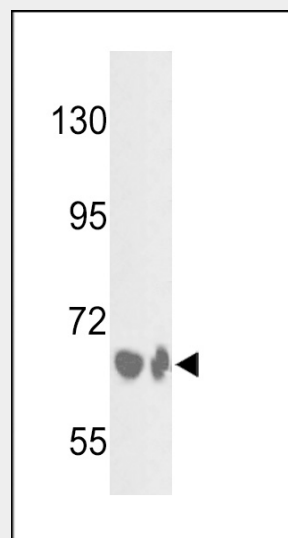
Purified polyclonal antibody supplied in PBS with 0.09% (W/V) sodium azide. This antibody is prepared by Saturated Ammonium Sulfate (SAS) precipitation followed by dialysis against PBS.

Storage

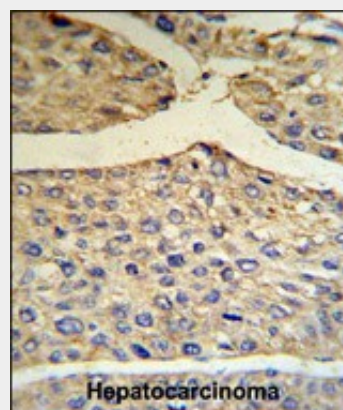
Maintain refrigerated at 2-8°C for up to 2 weeks. For long term storage store at -20°C in small aliquots to prevent freeze-thaw cycles.

Precautions

BF Antibody (Center) is for research use



Western blot analysis of BF Antibody (Center) (Cat.# AP7357c) in HepG2 cell line and mouse liver tissue lysates (35ug/lane). BF (arrow) was detected using the purified Pab.



BF Antibody (Center) (RB18685) IHC analysis in formalin fixed and paraffin embedded human hepatocarcinoma tissue followed by peroxidase conjugation of the secondary antibody and DAB staining. This data demonstrates the use of the BF Antibody (Center) for immunohistochemistry. Clinical relevance has not been evaluated.

only and not for use in diagnostic or therapeutic procedures.

BF Antibody (Center) - Protein Information

Name CFB

Synonyms BF, BFD

Function

Factor B which is part of the alternate pathway of the complement system is cleaved by factor D into 2 fragments: Ba and Bb. Bb, a serine protease, then combines with complement factor 3b to generate the C3 or C5 convertase. It has also been implicated in proliferation and differentiation of preactivated B-lymphocytes, rapid spreading of peripheral blood monocytes, stimulation of lymphocyte blastogenesis and lysis of erythrocytes. Ba inhibits the proliferation of preactivated B-lymphocytes.

Cellular Location

Secreted.

BF Antibody (Center) - Background

BF is complement factor B, a component of the alternative pathway of complement activation. Factor B circulates in the blood as a single chain polypeptide. Upon activation of the alternative pathway, it is cleaved by complement factor D yielding the noncatalytic chain Ba and the catalytic subunit Bb. The active subunit Bb is a serine protease which associates with C3b to form the alternative pathway C3 convertase. Bb is involved in the proliferation of preactivated B lymphocytes, while Ba inhibits their proliferation.

BF Antibody (Center) - References

Baatz,H., Klin Monatsbl Augenheilkd 226 (8), 654-658 (2009)
Goring,K., Am. J. Physiol., Cell Physiol. 296 (5), C1140-C1150 (2009)

BF Antibody (Center) - Protocols

Provided below are standard protocols that you may find useful for product applications.

- [Western Blot](#)
- [Blocking Peptides](#)
- [Dot Blot](#)
- [Immunohistochemistry](#)
- [Immunofluorescence](#)
- [Immunoprecipitation](#)
- [Flow Cytometry](#)
- [Cell Culture](#)