

SMAD2 Antibody (T220)
Affinity Purified Rabbit Polyclonal Antibody (Pab)
Catalog # AP7365B

Specification

SMAD2 Antibody (T220) - Product Information

Application	WB, IHC-P-Leica,E
Primary Accession	Q15796
Other Accession	Q70436 , Q62432 , Q9I9P9 , Q1W668
Reactivity Predicted	Human, Mouse Bovine, Zebrafish, Rat
Host	Rabbit
Clonality	Polyclonal
Isotype	Rabbit Ig
Calculated MW	52306
Antigen Region	201-230

SMAD2 Antibody (T220) - Additional Information

Gene ID 4087

Other Names

Mothers against decapentaplegic homolog 2, MAD homolog 2, Mothers against DPP homolog 2, JV18-1, Mad-related protein 2, hMAD-2, SMAD family member 2, SMAD 2, Smad2, hSMAD2, SMAD2, MADH2, MADR2

Target/Specificity

This SMAD2 antibody is generated from rabbits immunized with a KLH conjugated synthetic peptide between 201-230 amino acids from human SMAD2.

Dilution

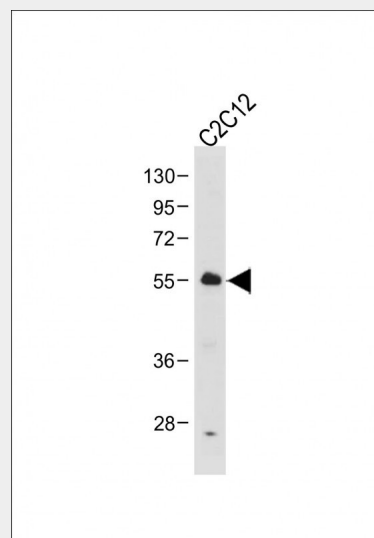
WB~~1:1000-2000
IHC-P-Leica~~1:250

Format

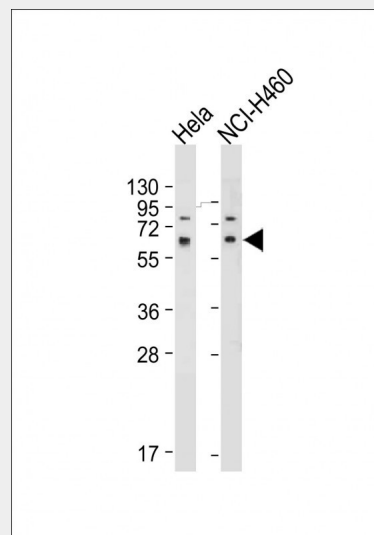
Purified polyclonal antibody supplied in PBS with 0.09% (W/V) sodium azide. This antibody is purified through a protein A column, followed by peptide affinity purification.

Storage

Maintain refrigerated at 2-8°C for up to 2 weeks. For long term storage store at -20°C in small aliquots to prevent freeze-thaw



Anti-SMAD2-T220 Antibody at 1:1000 dilution + C2C12 whole cell lysate
Lysates/proteins at 20 µg per lane.
Secondary Goat Anti-Rabbit IgG, (H+L), Peroxidase conjugated at 1/10000 dilution.
Predicted band size : 52 kDa
Blocking/Dilution buffer: 5% NFDM/TBST.



All lanes : Anti-SMAD2-T220 Antibody at 1:1000-2000 dilution Lane 1: HeLa whole cell lysate Lane 2: NCI-H460 whole cell lysate
Lysates/proteins at 20 µg per lane.

cycles.

Precautions

SMAD2 Antibody (T220) is for research use only and not for use in diagnostic or therapeutic procedures.

SMAD2 Antibody (T220) - Protein Information

Name SMAD2

Synonyms MADH2, MADR2

Function

Receptor-regulated SMAD (R-SMAD) that is an intracellular signal transducer and transcriptional modulator activated by TGF-beta (transforming growth factor) and activin type 1 receptor kinases. Binds the TRE element in the promoter region of many genes that are regulated by TGF-beta and, on formation of the SMAD2/SMAD4 complex, activates transcription. May act as a tumor suppressor in colorectal carcinoma. Positively regulates PDPK1 kinase activity by stimulating its dissociation from the 14-3-3 protein YWHAQ which acts as a negative regulator.

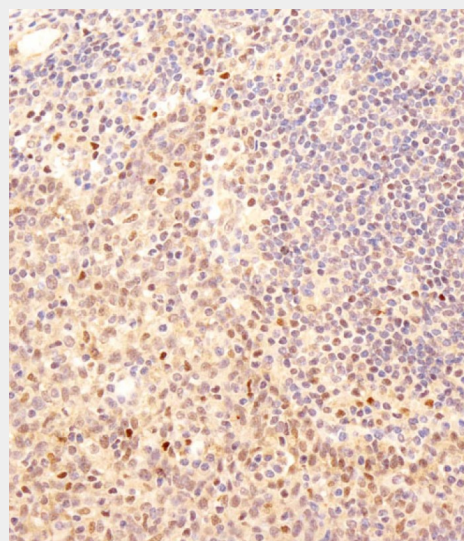
Cellular Location

Cytoplasm. Nucleus. Note=Cytoplasmic and nuclear in the absence of TGF-beta. On TGF-beta stimulation, migrates to the nucleus when complexed with SMAD4 (PubMed:9865696, PubMed:21145499). On dephosphorylation by phosphatase PPM1A, released from the SMAD2/SMAD4 complex, and exported out of the nucleus by interaction with RANBP1 (PubMed:16751101, PubMed:19289081). Localized mainly to the nucleus in the early stages of embryo development with expression becoming evident in the cytoplasm at the blastocyst and epiblast stages (By similarity) {ECO:0000250|UniProtKB:Q62432, ECO:0000269|PubMed:16751101, ECO:0000269|PubMed:19289081, ECO:0000269|PubMed:21145499, ECO:0000269|PubMed:9865696}

Tissue Location

Expressed at high levels in skeletal muscle, endothelial cells, heart and placenta.

Secondary Goat Anti-Rabbit IgG, (H+L), Peroxidase conjugated at 1/10000 dilution. Predicted band size : 52 kDa Blocking/Dilution buffer: 5% NFDm/TBST.



Immunohistochemical analysis of AP7365B on paraffin-embedded human tonsil tissue was performed on the Leica® BOND RXm. Tissue was fixed with formaldehyde at room temperature. Heat induced epitope retrieval was performed by EDTA buffer (pH9. 0). Samples were incubated with primary antibody(1:250) for 15min at room temperature. Leica Bond Polymer Refine Detection was used as the secondary antibody.

SMAD2 Antibody (T220) - Background

The protein belongs to the SMAD, a family of proteins similar to the proteins of the Drosophila gene 'mothers against decapentaplegic' (Mad) and the C. elegans gene Sma. SMAD proteins are signal transducers and transcriptional modulators that mediate multiple signaling pathways. This protein mediates the signal of the transforming growth factor (TGF)-beta, and thus regulates multiple cellular processes, such as cell proliferation, apoptosis, and differentiation. This protein is recruited to the TGF-beta receptors through its interaction with the SMAD anchor for receptor activation (SARA) protein. In response to TGF-beta signal, this protein is phosphorylated by the TGF-beta receptors. The phosphorylation induces the dissociation of this protein with SARA and the association with the family member SMAD4.

SMAD2 Antibody (T220) - Protocols

Provided below are standard protocols that you may find useful for product applications.

- [Western Blot](#)
- [Blocking Peptides](#)
- [Dot Blot](#)
- [Immunohistochemistry](#)
- [Immunofluorescence](#)
- [Immunoprecipitation](#)
- [Flow Cytometry](#)
- [Cell Culture](#)

The association with SMAD4 is important for the translocation of this protein into the nucleus, where it binds to target promoters and forms a transcription repressor complex with other cofactors. This protein can also be phosphorylated by activin type 1 receptor kinase, and mediates the signal from the activin.

SMAD2 Antibody (T220) - References

References for protein:

1. Funaba, M., J. Biol. Chem. 277 (44), 41361-41368 (2002)
2. Wicks, S.J., Mol. Cell. Biol. 20 (21), 8103-8111 (2000)

References for SY5Y (SH-SY5Y;

- ATCC#CRL-2266): 1. Ross RA, et al. Coordinate morphological and biochemical interconversion of human neuroblastoma cells. J. Natl. Cancer Inst. 71: 741-749, 1983. [PubMed: 6137586]; 2. Biedler JL, et al. Multiple neurotransmitter synthesis by human neuroblastoma cell lines and clones. Cancer Res. 38: 3751-3757, 1978. [PubMed: 29704].