

MYCN Antibody (C-term)
Purified Rabbit Polyclonal Antibody (Pab)
Catalog # AP7395b

Specification

MYCN Antibody (C-term) - Product Information

Application	WB, IHC-P,E
Primary Accession	P04198
Other Accession	Q63379 , P03966
Reactivity	Human
Predicted	Mouse, Rat
Host	Rabbit
Clonality	Polyclonal
Isotype	Rabbit Ig
Antigen Region	322-351

MYCN Antibody (C-term) - Additional Information

Gene ID 4613

Other Names

N-myc proto-oncogene protein, Class E
basic helix-loop-helix protein 37, bHLHE37,
MYCN, BHLHE37, NMYC

Target/Specificity

This MYCN antibody is generated from rabbits immunized with a KLH conjugated synthetic peptide between 322-351 amino acids from the C-terminal region of human MYCN.

Dilution

WB~~1:1000
IHC-P~~1:100

Format

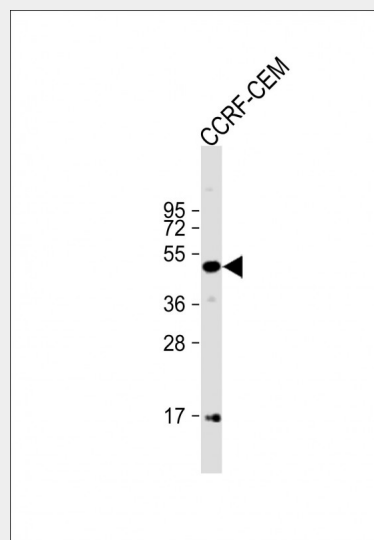
Purified polyclonal antibody supplied in PBS with 0.09% (W/V) sodium azide. This antibody is prepared by Saturated Ammonium Sulfate (SAS) precipitation followed by dialysis against PBS.

Storage

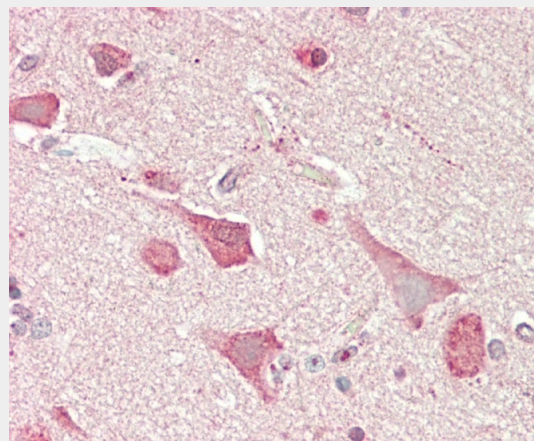
Maintain refrigerated at 2-8°C for up to 2 weeks. For long term storage store at -20°C in small aliquots to prevent freeze-thaw cycles.

Precautions

MYCN Antibody (C-term) is for research use



Anti-MYCN Antibody (C-term) at 1:1000 dilution + CCRF-CEM whole cell lysate
Lysates/proteins at 20 µg per lane.
Secondary Goat Anti-Rabbit IgG, (H+L), Peroxidase conjugated at 1/10000 dilution.
Predicted band size : 50 kDa
Blocking/Dilution buffer: 5% NFDM/TBST.



Formalin-fixed and paraffin-embedded H.brain tissue reacted with MYCN Antibody (C-term) (Cat#AP7395b).

MYCN Antibody (C-term) - Background

only and not for use in diagnostic or therapeutic procedures.

MYCN Antibody (C-term) - Protein Information

Name MYCN

Synonyms BHLHE37, NMYC

Function

Positively regulates the transcription of MYCNOS in neuroblastoma cells.

Cellular Location

Nucleus.

Tissue Location

Expressed in the neuronal cells of the cerebrum, neuroblastomas and thyroid tumors (at protein level)

MYCN is a member of the MYC family and a protein with a basic helix-loop-helix (bHLH) domain. This protein is located in the nucleus and must dimerize with another bHLH protein in order to bind DNA. Amplification of its gene is associated with a variety of tumors, most notably neuroblastomas.

MYCN Antibody (C-term) - References

Combaret,V., *Pediatr Blood Cancer* 53 (3), 329-331 (2009)
Alvarez-Rodriguez,R., *J. Cell. Sci.* 122 (PT 5), 595-599 (2009)
Jacobs,J.F., *BMC Cancer* 9, 239 (2009)

MYCN Antibody (C-term) - Protocols

Provided below are standard protocols that you may find useful for product applications.

- [Western Blot](#)
- [Blocking Peptides](#)
- [Dot Blot](#)
- [Immunohistochemistry](#)
- [Immunofluorescence](#)
- [Immunoprecipitation](#)
- [Flow Cytometry](#)
- [Cell Culture](#)

MYCN Antibody (C-term) - Citations

- [p53 Mutation Directs AURKA Overexpression via miR-25 and FBXW7 in Prostatic Small Cell Neuroendocrine Carcinoma.](#)