

CYP26B1 Polyclonal Antibody

Catalog # AP74005

Specification

CYP26B1 Polyclonal Antibody - Product Information

Application	WB
Primary Accession	Q9NR63
Reactivity	Human, Mouse, Rat
Host	Rabbit
Clonality	Polyclonal

CYP26B1 Polyclonal Antibody - Additional Information

Gene ID 56603

Other Names

CYP26B1 CYP26A2 P450RAI2

Dilution

WB~~WB 1:500-2000, ELISA
1:10000-20000

Format

Liquid in PBS containing 50% glycerol, 0.5% BSA and 0.02% sodium azide.

Storage Conditions

-20°C

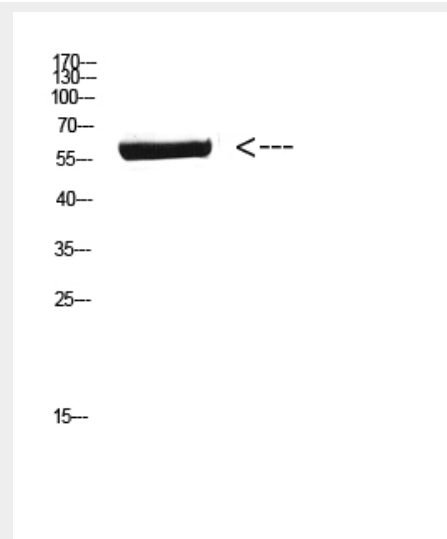
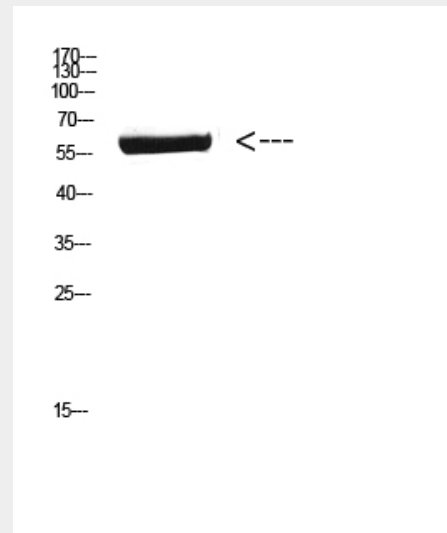
CYP26B1 Polyclonal Antibody - Protein Information

Name CYP26B1

Synonyms CYP26A2, P450RAI2

Function

Involved in the metabolism of retinoic acid (RA), rendering this classical morphogen inactive through oxidation (PubMed:10823918, PubMed:22020119). Involved in the specific inactivation of all-trans-retinoic acid (all-trans-RA), with a



CYP26B1 Polyclonal Antibody - Background

Involved in the metabolism of retinoic acid (RA), rendering this classical morphogen inactive through oxidation. Involved in the specific inactivation of all-trans-retinoic acid (all-trans-RA), with a preference for the

preference for the following substrates:
all-trans-RA > 9-cis-RA > 13-cis-RA
(PubMed:10823918,
PubMed:22020119).
Generates several hydroxylated forms of RA, including 4-OH-RA, 4-oxo-RA, and 18-OH-RA (PubMed:10823918).
Catalyzes the hydroxylation of carbon hydrogen bonds of atRA primarily at C-4 (PubMed:10823918,
PubMed:22020119). Essential for postnatal survival (By similarity). Plays a central role in germ cell development: acts by degrading RA in the developing testis, preventing STRA8 expression, thereby leading to delay of meiosis (By similarity). Required for the maintenance of the undifferentiated state of male germ cells during embryonic development in Sertoli cells, inducing arrest in G0 phase of the cell cycle and preventing meiotic entry (By similarity). Plays a role in skeletal development, both at the level of patterning and in the ossification of bone and the establishment of some synovial joints (PubMed:22019272).

Cellular Location

Endoplasmic reticulum membrane
{ECO:0000250|UniProtKB:O43174};
Peripheral membrane protein
{ECO:0000250|UniProtKB:O43174}.
Microsome membrane
{ECO:0000250|UniProtKB:O43174};
Peripheral membrane protein
{ECO:0000250|UniProtKB:O43174}

Tissue Location

Highly expressed in brain, particularly in the cerebellum and pons.

following substrates: all-trans-RA > 9-cis-RA > 13-cis-RA. Generates several hydroxylated forms of RA, including 4-OH-RA, 4-oxo-RA, and 18-OH-RA. Essential for postnatal survival. Plays a central role in germ cell development: acts by degrading RA in the developing testis, preventing STRA8 expression, thereby leading to delay of meiosis. Required for the maintenance of the undifferentiated state of male germ cells during embryonic development in Sertoli cells, inducing arrest in G0 phase of the cell cycle and preventing meiotic entry. Plays a role in skeletal development, both at the level of patterning and in the ossification of bone and the establishment of some synovial joints.

CYP26B1 Polyclonal Antibody - Protocols

Provided below are standard protocols that you

may find useful for product applications.

- [Western Blot](#)
- [Blocking Peptides](#)
- [Dot Blot](#)
- [Immunohistochemistry](#)
- [Immunofluorescence](#)
- [Immunoprecipitation](#)
- [Flow Cytometry](#)
- [Cell Culture](#)