

COL14A1 Polyclonal Antibody
Catalog # AP74182**Specification****COL14A1 Polyclonal Antibody - Product Information**

Application	IHC
Primary Accession	Q05707
Reactivity	Human, Mouse, Rat
Host	Rabbit
Clonality	Polyclonal

COL14A1 Polyclonal Antibody - Additional Information**Gene ID 7373****Other Names**

Collagen alpha-1(XIV) chain (Undulin)

DilutionIHC~IHC-p 1:50-200, ELISA
1:10000-20000**Format**

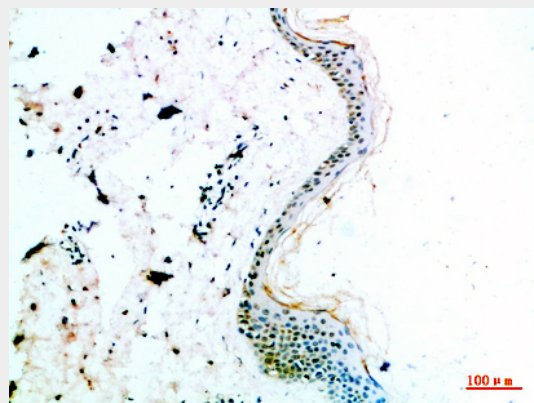
Liquid in PBS containing 50% glycerol, 0.5% BSA and 0.02% sodium azide.

Storage Conditions

-20°C

COL14A1 Polyclonal Antibody - Protein Information**Name** COL14A1 ([HGNC:2191](#))**Synonyms** UND**Function**

Plays an adhesive role by integrating collagen bundles. It is probably associated with the surface of interstitial collagen fibrils via COL1. The COL2 domain may then serve as a rigid arm which sticks out from the fibril and protrudes the large N-terminal globular domain into the extracellular space, where it might interact with other matrix molecules or cell surface receptors (By similarity).

**COL14A1 Polyclonal Antibody - Background**

Plays an adhesive role by integrating collagen bundles. It is probably associated with the surface of interstitial collagen fibrils via COL1. The COL2 domain may then serve as a rigid arm which sticks out from the fibril and protrudes the large N-terminal globular domain into the extracellular space, where it might interact with other matrix molecules or cell surface receptors (By similarity).

Cellular Location

Secreted, extracellular space, extracellular matrix {ECO:0000250|UniProtKB:P32018}

COL14A1 Polyclonal Antibody - Protocols

Provided below are standard protocols that you may find useful for product applications.

- [Western Blot](#)
- [Blocking Peptides](#)
- [Dot Blot](#)
- [Immunohistochemistry](#)
- [Immunofluorescence](#)
- [Immunoprecipitation](#)
- [Flow Cytometry](#)
- [Cell Culture](#)