

APOD Antibody (N-term)
Purified Rabbit Polyclonal Antibody (Pab)
Catalog # AP7423a

Specification

APOD Antibody (N-term) - Product Information

Application	WB,E
Primary Accession	P05090
Other Accession	P23593 , P37153 , P51910
Reactivity	Human, Mouse
Predicted	Rabbit, Rat
Host	Rabbit
Clonality	Polyclonal
Isotype	Rabbit Ig
Calculated MW	21276
Antigen Region	26-53

APOD Antibody (N-term) - Additional Information

Gene ID 347

Other Names

Apolipoprotein D, Apo-D, ApoD, APOD

Target/Specificity

This APOD antibody is generated from rabbits immunized with a KLH conjugated synthetic peptide between 26-53 amino acids from the N-terminal region of human APOD.

Dilution

WB~~1:1000

Format

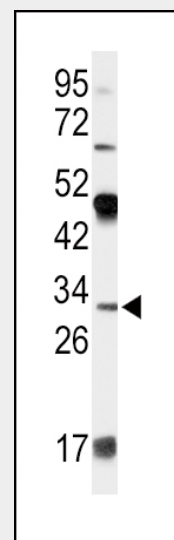
Purified polyclonal antibody supplied in PBS with 0.09% (W/V) sodium azide. This antibody is prepared by Saturated Ammonium Sulfate (SAS) precipitation followed by dialysis against PBS.

Storage

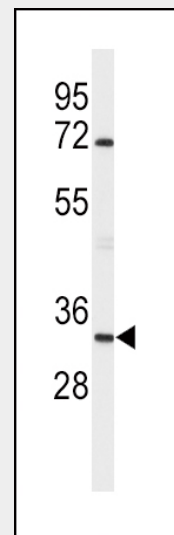
Maintain refrigerated at 2-8°C for up to 2 weeks. For long term storage store at -20°C in small aliquots to prevent freeze-thaw cycles.

Precautions

APOD Antibody (N-term) is for research use only and not for use in diagnostic or



Western blot analysis of APOD Antibody (N-term) (Cat. #AP7423a) in 293 cell line lysates (35ug/lane).APOD (arrow) was detected using the purified Pab.



Western blot analysis of APOD Antibody (N-term) (Cat. #AP7423a)in mouse brain tissue lysates (35ug/lane).APOD (arrow) was detected using the purified Pab.

therapeutic procedures.

APOD Antibody (N-term) - Protein Information

Name APOD

Function

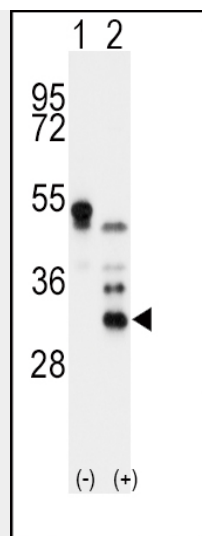
APOD occurs in the macromolecular complex with lecithin- cholesterol acyltransferase. It is probably involved in the transport and binding of bilin. Appears to be able to transport a variety of ligands in a number of different contexts.

Cellular Location

Secreted.

Tissue Location

Expressed in liver, intestine, pancreas, kidney, placenta, adrenal, spleen, fetal brain tissue and tears



Western blot analysis of APOD (arrow) using rabbit polyclonal APOD Antibody (N-term) (Cat. #AP7423a) 293 cell lysates (2 ug/lane) either nontransfected (Lane 1) or transiently transfected with the APOD gene (Lane 2) .

APOD Antibody (N-term) - Protocols

Provided below are standard protocols that you may find useful for product applications.

- [Western Blot](#)
- [Blocking Peptides](#)
- [Dot Blot](#)
- [Immunohistochemistry](#)
- [Immunofluorescence](#)
- [Immunoprecipitation](#)
- [Flow Cytometry](#)
- [Cell Culture](#)

APOD Antibody (N-term) - Background

APOD is a component of high density lipoprotein that has no marked similarity to other apolipoprotein sequences. It has a high degree of homology to plasma retinol-binding protein and other members of the alpha 2 microglobulin protein superfamily of carrier proteins, also known as lipocalins. This glycoprotein is closely associated with the enzyme lecithin:cholesterol acyltransferase - an enzyme involved in lipoprotein metabolism.

APOD Antibody (N-term) - References

Do Carmo,S., J. Neurosci. 28 (41), 10330-10338 (2008)
Chen,Y., Brain Res. 1233, 196-202 (2008)
Wei,Y.J., Biomarkers 13 (5), 535-548 (2008)