

## CDH17 Polyclonal Antibody

Catalog # AP74325

### Specification

#### CDH17 Polyclonal Antibody - Product Information

Application **WB**  
Primary Accession [Q12864](#)  
Reactivity **Human, Mouse, Rat**  
Host **Rabbit**  
Clonality **Polyclonal**

#### CDH17 Polyclonal Antibody - Additional Information

Gene ID 1015

#### Other Names

Cadherin-17 (Intestinal peptide-associated transporter HPT-1) (Liver-intestine cadherin) (LI-cadherin)

#### Dilution

WB~~WB 1:500-2000, ELISA  
1:10000-20000

#### Format

Liquid in PBS containing 50% glycerol, 0.5% BSA and 0.02% sodium azide.

#### Storage Conditions

-20°C

#### CDH17 Polyclonal Antibody - Protein Information

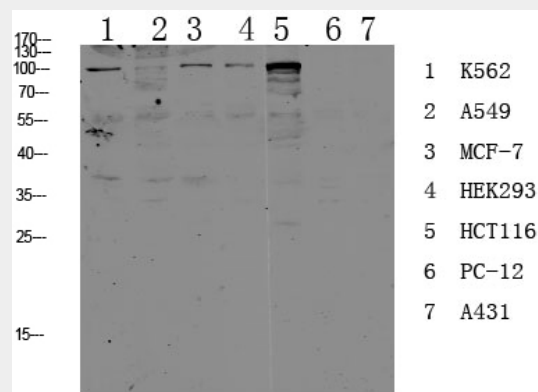
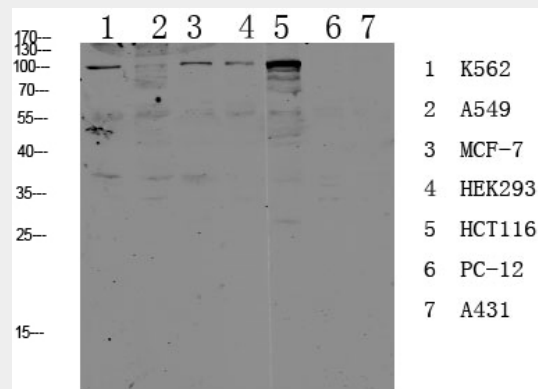
**Name** CDH17

#### Function

Cadherins are calcium-dependent cell adhesion proteins. They preferentially interact with themselves in a homophilic manner in connecting cells; cadherins may thus contribute to the sorting of heterogeneous cell types. LI-cadherin may have a role in the morphological organization of liver and intestine. Involved in intestinal peptide transport.

#### Cellular Location

Cell membrane; Single-pass type I



#### CDH17 Polyclonal Antibody - Background

Cadherins are calcium-dependent cell adhesion proteins. They preferentially interact with themselves in a homophilic manner in connecting cells; cadherins may thus contribute to the sorting of heterogeneous cell types. LI-cadherin may have a role in the morphological organization of liver and intestine. Involved in intestinal peptide transport.

membrane protein

**Tissue Location**

Expressed in the gastrointestinal tract and pancreatic duct. Not detected in kidney, lung, liver, brain, adrenal gland and skin.

**CDH17 Polyclonal Antibody - Protocols**

Provided below are standard protocols that you may find useful for product applications.

- [Western Blot](#)
- [Blocking Peptides](#)
- [Dot Blot](#)
- [Immunohistochemistry](#)
- [Immunofluorescence](#)
- [Immunoprecipitation](#)
- [Flow Cytometry](#)
- [Cell Culture](#)