

**IGFALS Antibody (Center)**  
**Purified Rabbit Polyclonal Antibody (Pab)**  
**Catalog # AP7478c**

**Specification**

**IGFALS Antibody (Center) - Product Information**

Application	<b>WB, IHC-P, FC,E</b>
Primary Accession	<a href="#">P35858</a>
Reactivity	<b>Human, Mouse</b>
Host	<b>Rabbit</b>
Clonality	<b>Polyclonal</b>
Isotype	<b>Rabbit Ig</b>
Calculated MW	<b>66035</b>
Antigen Region	<b>308-335</b>

**IGFALS Antibody (Center) - Additional Information**

**Gene ID** 3483

**Other Names**

Insulin-like growth factor-binding protein complex acid labile subunit, ALS, IGFALS, ALS

**Target/Specificity**

This IGFALS antibody is generated from rabbits immunized with a KLH conjugated synthetic peptide between 308-335 amino acids from the Central region of human IGFALS.

**Dilution**

WB~~1:1000  
IHC-P~~1:50~100  
FC~~1:10~50

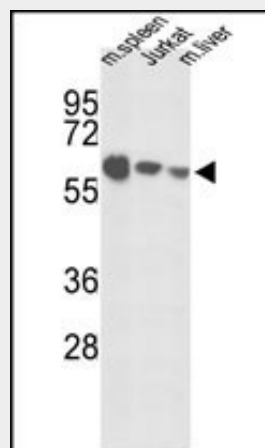
**Format**

Purified polyclonal antibody supplied in PBS with 0.09% (W/V) sodium azide. This antibody is prepared by Saturated Ammonium Sulfate (SAS) precipitation followed by dialysis against PBS.

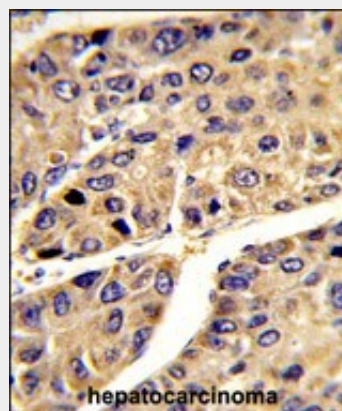
**Storage**

Maintain refrigerated at 2-8°C for up to 2 weeks. For long term storage store at -20°C in small aliquots to prevent freeze-thaw cycles.

**Precautions**



Western blot analysis of IGFALS Antibody (Center) (Cat.#AP7478c) in mouse spleen tissue, Jurkat cell line and mouse liver tissue lysates (35ug/lane). IGFALS (arrow) was detected using the purified Pab.



Formalin-fixed and paraffin-embedded human hepatocarcinoma reacted with IGFALS Antibody (Center), which was peroxidase-conjugated to the secondary antibody, followed by DAB staining. This data demonstrates the use of this antibody for immunohistochemistry; clinical relevance has not been evaluated.

IGFALS Antibody (Center) is for research use only and not for use in diagnostic or therapeutic procedures.

#### IGFALS Antibody (Center) - Protein Information

**Name** IGFALS

**Synonyms** ALS

#### Function

Involved in protein-protein interactions that result in protein complexes, receptor-ligand binding or cell adhesion.

#### Cellular Location

Secreted, extracellular space.

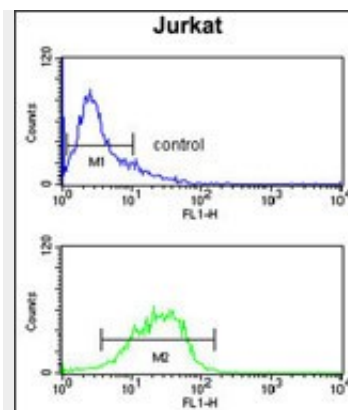
#### Tissue Location

Plasma.

#### IGFALS Antibody (Center) - Protocols

Provided below are standard protocols that you may find useful for product applications.

- [Western Blot](#)
- [Blocking Peptides](#)
- [Dot Blot](#)
- [Immunohistochemistry](#)
- [Immunofluorescence](#)
- [Immunoprecipitation](#)
- [Flow Cytometry](#)
- [Cell Culture](#)



IGFALS Antibody (Center) (Cat. #AP7478c) flow cytometry analysis of Jurkat cells (bottom histogram) compared to a negative control cell (top histogram). FITC-conjugated goat-anti-rabbit secondary antibodies were used for the analysis.

#### IGFALS Antibody (Center) - Background

IGFALS is a serum protein that binds insulin-like growth factors, increasing their half-life and their vascular localization. Production of the protein, which contains twenty leucine-rich repeats, is stimulated by growth hormone. Defects in this protein are a cause of acid-labile subunit deficiency, which manifests itself in a delayed and slow puberty.

#### IGFALS Antibody (Center) - References

Leong S.R., Baxter R.C. Mol. Endocrinol. 6:870-876(1992)  
Suwanichkul A. Endocrinology 141:833-838(2000)  
Liu T., Qian W.-J. Proteome Res. 4:2070-2080(2005)