

GHRHR Antibody (C-term)
Purified Rabbit Polyclonal Antibody (Pab)
Catalog # AP7494b

Specification

GHRHR Antibody (C-term) - Product Information

Application	WB,E
Primary Accession	Q02643
Reactivity	Human
Host	Rabbit
Clonality	Polyclonal
Isotype	Rabbit Ig
Calculated MW	47402
Antigen Region	367-397

GHRHR Antibody (C-term) - Additional Information

Gene ID 2692

Other Names

Growth hormone-releasing hormone receptor, GHRH receptor, Growth hormone-releasing factor receptor, GRF receptor, GRFR, GHRHR

Target/Specificity

This GHRHR antibody is generated from rabbits immunized with a KLH conjugated synthetic peptide between 367-397 amino acids from the C-terminal region of human GHRHR.

Dilution

WB~~1:1000

Format

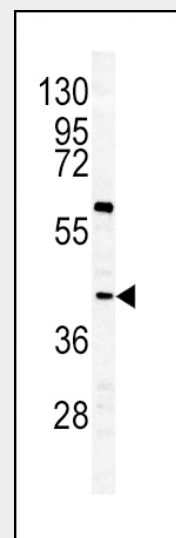
Purified polyclonal antibody supplied in PBS with 0.09% (W/V) sodium azide. This antibody is prepared by Saturated Ammonium Sulfate (SAS) precipitation followed by dialysis against PBS.

Storage

Maintain refrigerated at 2-8°C for up to 2 weeks. For long term storage store at -20°C in small aliquots to prevent freeze-thaw cycles.

Precautions

GHRHR Antibody (C-term) is for research



Western blot analysis of GHRHR antibody (C-term) (Cat.#AP7494b) in K562 cell line lysates (35ug/lane). GHRHR (arrow) was detected using the purified Pab.

GHRHR Antibody (C-term) - Background

GHRHR is a receptor for growth hormone-releasing hormone. Binding of this hormone to the receptor leads to synthesis and release of growth hormone. Mutations in GHRHR gene have been associated with isolated growth hormone deficiency (IGHD), also known as Dwarfism of Sindh, a disorder characterized by short stature.

GHRHR Antibody (C-term) - References

Johansson,A., Jonasson,I. PLoS ONE 4 (2), E4464 (2009)
Squire,J., Zhou,A. Genomics 19 (1), 174-175 (1994)

use only and not for use in diagnostic or therapeutic procedures.

GHRHR Antibody (C-term) - Protein Information

Name GHRHR

Function

Receptor for GRF, coupled to G proteins which activate adenylyl cyclase. Stimulates somatotroph cell growth, growth hormone gene transcription and growth hormone secretion.

Cellular Location

Cell membrane; Multi-pass membrane protein.

Tissue Location

Pituitary gland.

GHRHR Antibody (C-term) - Protocols

Provided below are standard protocols that you may find useful for product applications.

- [Western Blot](#)
- [Blocking Peptides](#)
- [Dot Blot](#)
- [Immunohistochemistry](#)
- [Immunofluorescence](#)
- [Immunoprecipitation](#)
- [Flow Cytometry](#)
- [Cell Culture](#)