

MAPK11 Antibody (C-term)
Purified Rabbit Polyclonal Antibody (Pab)
Catalog # AP7509B

Specification

MAPK11 Antibody (C-term) - Product Information

Application	WB,E
Primary Accession	Q15759
Other Accession	Q2XNF2
Reactivity	Human, Mouse
Host	Rabbit
Clonality	Polyclonal
Isotype	Rabbit Ig
Antigen Region	334-359

MAPK11 Antibody (C-term) - Additional Information

Gene ID 5600

Other Names

Mitogen-activated protein kinase 11, MAP kinase 11, MAPK 11, Mitogen-activated protein kinase p38 beta, MAP kinase p38 beta, p38b, Stress-activated protein kinase 2b, SAPK2b, p38-2, MAPK11, PRKM11, SAPK2, SAPK2B

Target/Specificity

This MAPK11 antibody is generated from rabbits immunized with a KLH conjugated synthetic peptide between 334-359 amino acids from the C-terminal region of human MAPK11.

Dilution

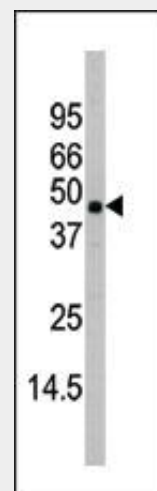
WB~~1:1000

Format

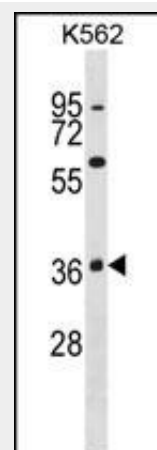
Purified polyclonal antibody supplied in PBS with 0.09% (W/V) sodium azide. This antibody is prepared by Saturated Ammonium Sulfate (SAS) precipitation followed by dialysis against PBS.

Storage

Maintain refrigerated at 2-8°C for up to 2 weeks. For long term storage store at -20°C in small aliquots to prevent freeze-thaw cycles.



Western blot analysis of anti-P38beta Antibody (C-term) (Cat. #AP7509b) in mouse heart tissue lysates (35ug/lane). P38beta (arrow) was detected using the purified Pab.



P38beta Antibody (C-term) (Cat. #AP7509b) western blot analysis in K562 cell line lysates (35ug/lane). This demonstrates the P38beta antibody detected the P38beta protein (arrow).

MAPK11 Antibody (C-term) - Background

P38 beta is a member of the MAP kinase subfamily of Ser/Thr protein kinases. MAP

Precautions

MAPK11 Antibody (C-term) is for research use only and not for use in diagnostic or therapeutic procedures.

MAPK11 Antibody (C-term) - Protein Information

Name MAPK11

Synonyms PRKM11, SAPK2, SAPK2B

Function

Serine/threonine kinase which acts as an essential component of the MAP kinase signal transduction pathway. MAPK11 is one of the four p38 MAPKs which play an important role in the cascades of cellular responses evoked by extracellular stimuli such as proinflammatory cytokines or physical stress leading to direct activation of transcription factors. Accordingly, p38 MAPKs phosphorylate a broad range of proteins and it has been estimated that they may have approximately 200 to 300 substrates each. MAPK11 functions are mostly redundant with those of MAPK14. Some of the targets are downstream kinases which are activated through phosphorylation and further phosphorylate additional targets. RPS6KA5/MSK1 and RPS6KA4/MSK2 can directly phosphorylate and activate transcription factors such as CREB1, ATF1, the NF-kappa-B isoform RELA/NFKB3, STAT1 and STAT3, but can also phosphorylate histone H3 and the nucleosomal protein HMG1. RPS6KA5/MSK1 and RPS6KA4/MSK2 play important roles in the rapid induction of immediate-early genes in response to stress or mitogenic stimuli, either by inducing chromatin remodeling or by recruiting the transcription machinery. On the other hand, two other kinase targets, MAPKAPK2/MK2 and MAPKAPK3/MK3, participate in the control of gene expression mostly at the post-transcriptional level, by phosphorylating ZFP36 (tristetraprolin) and ELAVL1, and by regulating EEF2K, which is important for the elongation of mRNA during translation. MKNK1/MNK1 and MKNK2/MNK2, two other kinases activated by p38 MAPKs, regulate protein synthesis by phosphorylating the initiation factor EIF4E2. In the cytoplasm, the p38 MAPK pathway is an important regulator of protein turnover. For example, CFLAR is an

kinases act as an integration point for multiple biochemical signals, and are involved in a wide variety of cellular processes such as proliferation, differentiation, transcription regulation and development. This kinase is closely related to p38 MAP kinase, both of which can be activated by changes in osmolarity of the extracellular environment, proinflammatory cytokines and cellular stress. This protein preferentially phosphorylates transcription factor ATF2. It is activated by phosphorylation on threonine and tyrosine by MKK6, and inhibited by pyridinyl-imidazole related compounds. Highest levels of expression are found in the brain and heart, with additional expression in the placenta, lung, liver, skeletal muscle, kidney and pancreas.

MAPK11 Antibody (C-term) - References

Strausberg, R.L., et al., Proc. Natl. Acad. Sci. U.S.A. 99(26):16899-16903 (2002).
Dunham, I., et al., Nature 402(6761):489-495 (1999).
Enslen, H., et al., J. Biol. Chem. 273(3):1741-1748 (1998).
Kumar, S., et al., Biochem. Biophys. Res. Commun. 235(3):533-538 (1997).
Goedert, M., et al., EMBO J. 16(12):3563-3571 (1997).

inhibitor of TNF-induced apoptosis whose proteasome-mediated degradation is regulated by p38 MAPK phosphorylation. Ectodomain shedding of transmembrane proteins is regulated by p38 MAPKs as well. In response to inflammatory stimuli, p38 MAPKs phosphorylate the membrane-associated metalloprotease ADAM17. Such phosphorylation is required for ADAM17-mediated ectodomain shedding of TGF- α family ligands, which results in the activation of EGFR signaling and cell proliferation. Additional examples of p38 MAPK substrates are the FGFR1. FGFR1 can be translocated from the extracellular space into the cytosol and nucleus of target cells, and regulates processes such as rRNA synthesis and cell growth. FGFR1 translocation requires p38 MAPK activation. In the nucleus, many transcription factors are phosphorylated and activated by p38 MAPKs in response to different stimuli. Classical examples include ATF1, ATF2, ATF6, ELK1, PTPRH, DDIT3, TP53/p53 and MEF2C and MEF2A. The p38 MAPKs are emerging as important modulators of gene expression by regulating chromatin modifiers and remodelers. The promoters of several genes involved in the inflammatory response, such as IL6, IL8 and IL12B, display a p38 MAPK-dependent enrichment of histone H3 phosphorylation on 'Ser-10' (H3S10ph) in LPS-stimulated myeloid cells. This phosphorylation enhances the accessibility of the cryptic NF- κ B-binding sites marking promoters for increased NF- κ B recruitment.

Cellular Location

Cytoplasm. Nucleus.

Tissue Location

Highest levels in the brain and heart. Also expressed in the placenta, lung, liver, skeletal muscle, kidney and pancreas

MAPK11 Antibody (C-term) - Protocols

Provided below are standard protocols that you may find useful for product applications.

- [Western Blot](#)
- [Blocking Peptides](#)
- [Dot Blot](#)
- [Immunohistochemistry](#)

- [Immunofluorescence](#)
- [Immunoprecipitation](#)
- [Flow Cytometry](#)
- [Cell Culture](#)