

CLIC1 Antibody

Purified Rabbit Polyclonal Antibody (Pab)

Catalog # AP7589a

Specification

CLIC1 Antibody - Product Information

Application	WB, IHC-P,E
Primary Accession	O00299
Reactivity	Human
Host	Rabbit
Clonality	Polyclonal
Isotype	Rabbit Ig
Calculated MW	26923

CLIC1 Antibody - Additional Information

Gene ID 1192

Other Names

Chloride intracellular channel protein 1, Chloride channel ABP, Nuclear chloride ion channel 27, NCC27, Regulatory nuclear chloride ion channel protein, hRNCC, CLIC1, G6, NCC27

Target/Specificity

This CLIC1 antibody is generated from rabbits immunized with a recombinant human CLIC1 protein.

Dilution

WB~~1:1000
IHC-P~~1:10~50

Format

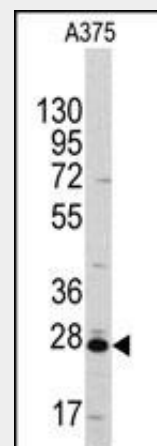
Purified polyclonal antibody supplied in PBS with 0.09% (W/V) sodium azide. This antibody is prepared by Saturated Ammonium Sulfate (SAS) precipitation followed by dialysis against PBS.

Storage

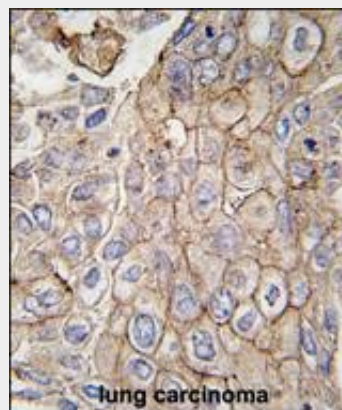
Maintain refrigerated at 2-8°C for up to 2 weeks. For long term storage store at -20°C in small aliquots to prevent freeze-thaw cycles.

Precautions

CLIC1 Antibody is for research use only and not for use in diagnostic or therapeutic procedures.



Western blot analysis of anti-CLIC1 Antibody (Cat.#AP7589a) in A375 cell line lysates (35ug/lane). CLIC1(arrow) was detected using the purified Pab.



Formalin-fixed and paraffin-embedded human lung carcinoma tissue reacted with CLIC1 antibody, which was peroxidase-conjugated to the secondary antibody, followed by DAB staining. This data demonstrates the use of this antibody for immunohistochemistry; clinical relevance has not been evaluated.

CLIC1 Antibody - Background

Chloride channels are a diverse group of proteins that regulate fundamental cellular

CLIC1 Antibody - Protein Information**Name** CLIC1**Synonyms** G6, NCC27**Function**

Can insert into membranes and form chloride ion channels. Channel activity depends on the pH. Membrane insertion seems to be redox-regulated and may occur only under oxydizing conditions. Involved in regulation of the cell cycle.

Cellular Location

Nucleus. Nucleus membrane; Single-pass membrane protein. Cytoplasm. Cell membrane; Single-pass membrane protein. Note=Mostly in the nucleus including in the nuclear membrane (PubMed:9139710, PubMed:12681486). Small amount in the cytoplasm and the plasma membrane (PubMed:9139710). Exists both as soluble cytoplasmic protein and as membrane protein with probably a single transmembrane domain (PubMed:11940526, PubMed:11551966, PubMed:14613939).

Tissue Location

Expression is prominent in heart, placenta, liver, kidney and pancreas.

processes including stabilization of cell membrane potential, transepithelial transport, maintenance of intracellular pH, and regulation of cell volume. Chloride intracellular channel 1 is a member of the p64 family; the protein localizes principally to the cell nucleus and exhibits both nuclear and plasma membrane chloride ion channel activity.

CLIC1 Antibody - References

Singh,H., FEBS J. 274 (24), 6306-6316 (2007)
Ulmasov,B., (er) BMC Cell Biol. 8, 8 (2007)
Edwards,J.C., J. Membr. Biol. 213 (1), 39-46 (2006)

CLIC1 Antibody - Protocols

Provided below are standard protocols that you may find useful for product applications.

- [Western Blot](#)
- [Blocking Peptides](#)
- [Dot Blot](#)
- [Immunohistochemistry](#)
- [Immunofluorescence](#)
- [Immunoprecipitation](#)
- [Flow Cytometry](#)
- [Cell Culture](#)