

EphB2 Antibody (N-term)
Purified Rabbit Polyclonal Antibody (Pab)
Catalog # AP7623a

Specification

EphB2 Antibody (N-term) - Product Information

Application	IHC-P,E
Primary Accession	P29323
Reactivity	Human, Mouse
Host	Rabbit
Clonality	Polyclonal
Isotype	Rabbit IgG
Antigen Region	103-133

EphB2 Antibody (N-term) - Additional Information

Gene ID 2048

Other Names

Ephrin type-B receptor 2,
Developmentally-regulated Eph-related
tyrosine kinase, ELK-related tyrosine kinase,
EPH tyrosine kinase 3, EPH-like kinase 5,
EK5, hEK5, Renal carcinoma antigen
NY-REN-47, Tyrosine-protein kinase TYRO5,
Tyrosine-protein kinase receptor EPH-3,
EPHB2, DRT, EPHT3, EPTH3, ERK, HEK5,
TYRO5

Target/Specificity

This EphB2 antibody is generated from rabbits immunized with a KLH conjugated synthetic peptide between 103-133 amino acids from the N-terminal region of human EphB2.

Dilution

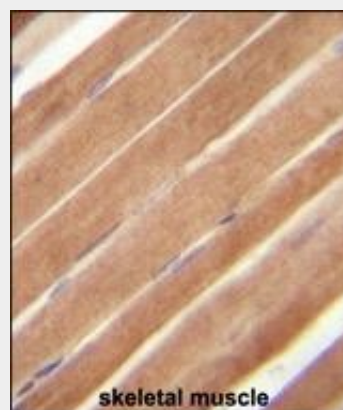
IHC-P~~1:10~50

Format

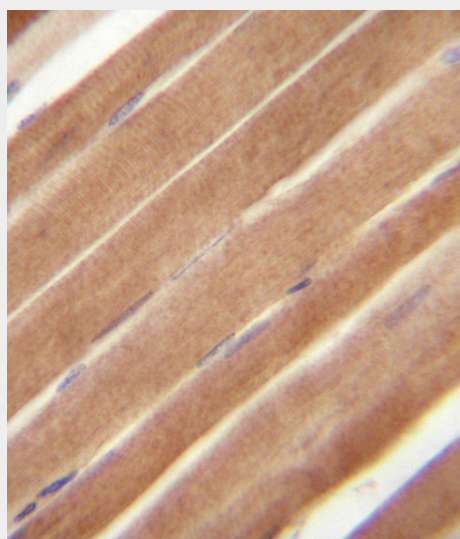
Purified polyclonal antibody supplied in PBS with 0.09% (W/V) sodium azide. This antibody is prepared by Saturated Ammonium Sulfate (SAS) precipitation followed by dialysis against PBS.

Storage

Maintain refrigerated at 2-8°C for up to 2 weeks. For long term storage store at -20°C in small aliquots to prevent freeze-thaw cycles.



EphB2 Antibody (N-term)(Cat. #AP7623A)immunohistochemistry analysis in formalin fixed and paraffin embedded human skeletal muscle followed by peroxidase conjugation of the secondary antibody and DAB staining.This data demonstrates the use of EphB2 Antibody (N-term) for immunohistochemistry. Clinical relevance has not been evaluated.



EphB2 Antibody (N-term)(Cat. #AP7623A)immunohistochemistry analysis in formalin fixed and paraffin embedded human skeletal muscle followed by peroxidase conjugation of the secondary antibody and DAB staining.This data demonstrates the use

Precautions

EphB2 Antibody (N-term) is for research use only and not for use in diagnostic or therapeutic procedures.

EphB2 Antibody (N-term) - Protein Information

Name EPHB2

Synonyms DRT, EPHT3, EPTH3, ERK, HEK5, TYRO5

Function

Receptor tyrosine kinase which binds promiscuously transmembrane ephrin-B family ligands residing on adjacent cells, leading to contact-dependent bidirectional signaling into neighboring cells. The signaling pathway downstream of the receptor is referred to as forward signaling while the signaling pathway downstream of the ephrin ligand is referred to as reverse signaling. Functions in axon guidance during development. Involved in the guidance of commissural axons, that form a major interhemispheric connection between the 2 temporal lobes of the cerebral cortex. Also involved in guidance of contralateral inner ear efferent growth cones at the midline and of retinal ganglion cell axons to the optic disk. In addition to axon guidance, also regulates dendritic spines development and maturation and stimulates the formation of excitatory synapses. Upon activation by EFN1, abolishes the ARHGEF15-mediated negative regulation on excitatory synapse formation. Controls other aspects of development including angiogenesis, palate development and in inner ear development through regulation of endolymph production. Forward and reverse signaling through the EFN2/EPHB2 complex regulate movement and adhesion of cells that tubularize the urethra and septate the cloaca. May function as a tumor suppressor. May be involved in the regulation of platelet activation and blood coagulation (PubMed:30213874).

Cellular Location

Cell membrane; Single-pass type I membrane protein. Cell projection, axon. Cell projection, dendrite

of EphB2 Antibody (N-term) for immunohistochemistry. Clinical relevance has not been evaluated.

EphB2 Antibody (N-term) - Background

Ephrin receptors and their ligands, the ephrins, mediate numerous developmental processes, particularly in the nervous system. Based on their structures and sequence relationships, ephrins are divided into the ephrin-A (EFNA) class, which are anchored to the membrane by a glycosylphosphatidylinositol linkage, and the ephrin-B (EFNB) class, which are transmembrane proteins. The Eph family of receptors are divided into 2 groups based on the similarity of their extracellular domain sequences and their affinities for binding ephrin-A and ephrin-B ligands. Ephrin receptors make up the largest subgroup of the receptor tyrosine kinase (RTK) family. The ligand-activated form of EphB2, which belongs to the Tyr family of protein kinases, interacts with multiple proteins, including GTPase-activating protein (RASGAP) through its SH2 domain. It binds RASGAP through the juxtamembrane tyrosines residues, and also interacts with PRKCABP and GRIP1 This type I membrane protein is expressed in brain, heart, lung, kidney, placenta, pancreas, liver and skeletal muscle. It is preferentially expressed in fetal brain. This protein contains putatively 2 fibronectin type III domains and 1 sterile alpha motif (SAM) domain.

EphB2 Antibody (N-term) - References

Thanos, C.D., et al., Science 283(5403):833-836 (1999).
Tang, X.X., et al., Oncogene 17(4):521-526 (1998).
Fox, G.M., et al., Oncogene 10(5):897-905 (1995).
Ikegaki, N., et al., Hum. Mol. Genet. 4(11):2033-2045 (1995).
Iwase, T., et al., Biochem. Biophys. Res. Commun. 194(2):698-705 (1993).

Tissue Location

Brain, heart, lung, kidney, placenta,
pancreas, liver and skeletal muscle.
Preferentially expressed in fetal brain

EphB2 Antibody (N-term) - Protocols

Provided below are standard protocols that you
may find useful for product applications.

- [Western Blot](#)
- [Blocking Peptides](#)
- [Dot Blot](#)
- [Immunohistochemistry](#)
- [Immunofluorescence](#)
- [Immunoprecipitation](#)
- [Flow Cytometry](#)
- [Cell Culture](#)

EphB2 Antibody (N-term) - Citations

- [EphrinB2 and EphB4 expression in pterygia: new insights and preliminary results.](#)