

**NAB2 Antibody (Center)**  
**Purified Rabbit Polyclonal Antibody (Pab)**  
**Catalog # AP7635c**

**Specification**

**NAB2 Antibody (Center) - Product Information**

Application	WB,E
Primary Accession	<a href="#">Q15742</a>
Other Accession	<a href="#">Q61127</a>
Reactivity	Human
Predicted	Mouse
Host	Rabbit
Clonality	Polyclonal
Isotype	Rabbit Ig
Calculated MW	56594
Antigen Region	109-138

**NAB2 Antibody (Center) - Additional Information**

**Gene ID** 4665

**Other Names**

NGFI-A-binding protein 2, EGR-1-binding protein 2, Melanoma-associated delayed early response protein, Protein MADER, NAB2, MADER

**Target/Specificity**

This NAB2 antibody is generated from rabbits immunized with a KLH conjugated synthetic peptide between 109-138 amino acids from the Central region of human NAB2.

**Dilution**

WB~~1:1000

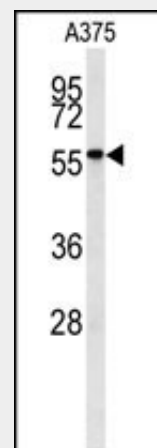
**Format**

Purified polyclonal antibody supplied in PBS with 0.09% (W/V) sodium azide. This antibody is prepared by Saturated Ammonium Sulfate (SAS) precipitation followed by dialysis against PBS.

**Storage**

Maintain refrigerated at 2-8°C for up to 2 weeks. For long term storage store at -20°C in small aliquots to prevent freeze-thaw cycles.

**Precautions**



Western blot analysis of NAB2 antibody (Center) (Cat.#AP7635c) in A375 cell line lysates (35ug/lane). NAB2 (arrow) was detected using the purified Pab.

**NAB2 Antibody (Center) - Background**

NAB2 is a member of the family of NGFI-A binding (NAB) proteins, which function in the nucleus to repress transcription induced by some members of the EGR (early growth response) family of transactivators. NAB proteins can homo- or hetero-multimerize with other EGR or NAB proteins through a conserved N-terminal domain, and repress transcription through two partially redundant C-terminal domains. Transcriptional repression by this protein is mediated in part by interactions with the nucleosome remodeling and deacetylase (NuRD) complex.

**NAB2 Antibody (Center) - References**

Srinivasan,R., J. Biol. Chem. 281 (22), 15129-15137 (2006)  
Kumbrink,J., J. Biol. Chem. 280 (52), 42785-42793 (2005)  
Lucerna,M., J. Biol. Chem. 278 (13), 11433-11440 (2003)

NAB2 Antibody (Center) is for research use only and not for use in diagnostic or therapeutic procedures.

#### **NAB2 Antibody (Center) - Protein Information**

**Name** NAB2

**Synonyms** MADER

#### **Function**

Acts as a transcriptional repressor for zinc finger transcription factors EGR1 and EGR2. Isoform 2 lacks repression ability (By similarity).

#### **Cellular Location**

Nucleus. Note=Isoform 2 is not localized to the nucleus.

#### **Tissue Location**

Widely expressed at low levels. Highly expressed in melanoma cell lines

#### **NAB2 Antibody (Center) - Protocols**

Provided below are standard protocols that you may find useful for product applications.

- [Western Blot](#)
- [Blocking Peptides](#)
- [Dot Blot](#)
- [Immunohistochemistry](#)
- [Immunofluorescence](#)
- [Immunoprecipitation](#)
- [Flow Cytometry](#)
- [Cell Culture](#)