

**IGF1 Receptor (IGF1R) Antibody (N-term)**  
**Purified Rabbit Polyclonal Antibody (Pab)**  
**Catalog # AP7649a**

**Specification**

**IGF1 Receptor (IGF1R) Antibody (N-term) - Product Information**

Application	WB, IHC-P,E
Primary Accession	<a href="#">P08069</a>
Other Accession	<a href="#">P24062</a> , <a href="#">Q60751</a>
Reactivity	Human
Predicted	Mouse, Rat
Host	Rabbit
Clonality	Polyclonal
Isotype	Rabbit Ig
Antigen Region	19-51

**IGF1 Receptor (IGF1R) Antibody (N-term) - Additional Information**

**Gene ID 3480**

**Other Names**

Insulin-like growth factor 1 receptor, Insulin-like growth factor I receptor, IGF-I receptor, CD221, Insulin-like growth factor 1 receptor alpha chain, Insulin-like growth factor 1 receptor beta chain, IGF1R

**Target/Specificity**

This IGF1 Receptor (IGF1R) antibody is generated from rabbits immunized with a KLH conjugated synthetic peptide between 19-51 amino acids from the N-terminal region of human IGF1 Receptor (IGF1R).

**Dilution**

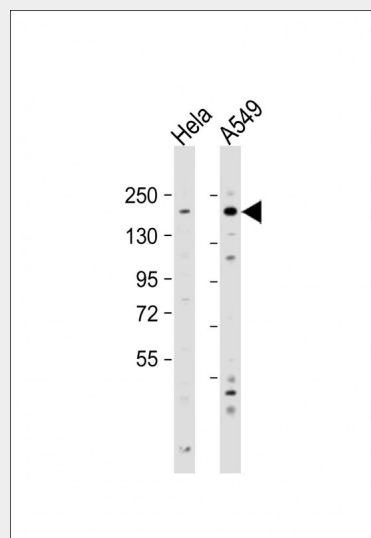
WB~~1:2000  
IHC-P~~1:50~100

**Format**

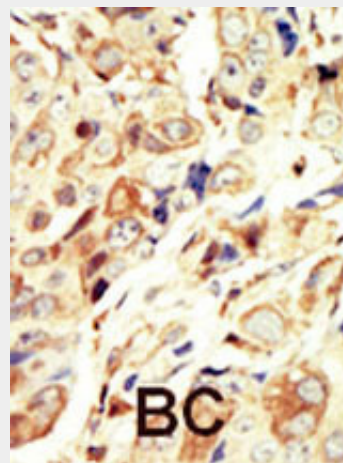
Purified polyclonal antibody supplied in PBS with 0.09% (W/V) sodium azide. This antibody is prepared by Saturated Ammonium Sulfate (SAS) precipitation followed by dialysis against PBS.

**Storage**

Maintain refrigerated at 2-8°C for up to 2 weeks. For long term storage store at -20°C in small aliquots to prevent freeze-thaw



All lanes : Anti-IGF1R Antibody at 1:2000 dilution Lane 1: Hela whole cell lysate Lane 2: A549 whole cell lysate Lysates/proteins at 20 µg per lane. Secondary Goat Anti-Rabbit IgG, (H+L), Peroxidase conjugated at 1/10000 dilution. Predicted band size : 155 kDa Blocking/Dilution buffer: 5% NFDM/TBST.



Formalin-fixed and paraffin-embedded human cancer tissue reacted with the primary antibody, which was peroxidase-conjugated to the secondary antibody, followed by DAB staining. This data demonstrates the use of this antibody for

cycles.

### Precautions

IGF1 Receptor (IGF1R) Antibody (N-term) is for research use only and not for use in diagnostic or therapeutic procedures.

### IGF1 Receptor (IGF1R) Antibody (N-term) - Protein Information

**Name** IGF1R

### Function

Receptor tyrosine kinase which mediates actions of insulin-like growth factor 1 (IGF1). Binds IGF1 with high affinity and IGF2 and insulin (INS) with a lower affinity. The activated IGF1R is involved in cell growth and survival control. IGF1R is crucial for tumor transformation and survival of malignant cell. Ligand binding activates the receptor kinase, leading to receptor autophosphorylation, and tyrosines phosphorylation of multiple substrates, that function as signaling adapter proteins including, the insulin-receptor substrates (IRS1/2), Shc and 14-3-3 proteins. Phosphorylation of IRSs proteins lead to the activation of two main signaling pathways: the PI3K-AKT/PKB pathway and the Ras-MAPK pathway. The result of activating the MAPK pathway is increased cellular proliferation, whereas activating the PI3K pathway inhibits apoptosis and stimulates protein synthesis. Phosphorylated IRS1 can activate the 85 kDa regulatory subunit of PI3K (PIK3R1), leading to activation of several downstream substrates, including protein AKT/PKB. AKT phosphorylation, in turn, enhances protein synthesis through mTOR activation and triggers the antiapoptotic effects of IGF1R through phosphorylation and inactivation of BAD. In parallel to PI3K-driven signaling, recruitment of Grb2/SOS by phosphorylated IRS1 or Shc leads to recruitment of Ras and activation of the ras-MAPK pathway. In addition to these two main signaling pathways IGF1R signals also through the Janus kinase/signal transducer and activator of transcription pathway (JAK/STAT). Phosphorylation of JAK proteins can lead to phosphorylation/activation of signal transducers and activators of transcription (STAT) proteins. In particular activation of STAT3, may be essential for the

immunohistochemistry; clinical relevance has not been evaluated. BC = breast carcinoma; HC = hepatocarcinoma.

### IGF1 Receptor (IGF1R) Antibody (N-term) - Background

The IGF1R receptor binds insulin-like growth factor with a high affinity and plays a critical role in transformation events. Cleavage of the precursor generates alpha and beta subunits. It is highly overexpressed in most malignant tissues where it functions as an anti-apoptotic agent by enhancing cell survival. The protein possess tyrosine kinase activity.

### IGF1 Receptor (IGF1R) Antibody (N-term) - References

Song, R.X., et al., Proc. Natl. Acad. Sci. U.S.A. 101(7):2076-2081 (2004).  
Zhao, H., et al., Oncogene 23(3):786-794 (2004).  
Lu, Y., et al., Biochem. Biophys. Res. Commun. 313(3):709-715 (2004).  
Hakam, A., et al., Dig. Dis. Sci. 48(10):1972-1978 (2003).  
Li, Y., et al., Arterioscler. Thromb. Vasc. Biol. 23(12):2178-2184 (2003).

transforming activity of IGF1R. The JAK/STAT pathway activates gene transcription and may be responsible for the transforming activity. JNK kinases can also be activated by the IGF1R. IGF1 exerts inhibiting activities on JNK activation via phosphorylation and inhibition of MAP3K5/ASK1, which is able to directly associate with the IGF1R.

**Cellular Location**

Cell membrane; Single-pass type I membrane protein

**Tissue Location**

Found as a hybrid receptor with INSR in muscle, heart, kidney, adipose tissue, skeletal muscle, hepatoma, fibroblasts, spleen and placenta (at protein level). Expressed in a variety of tissues. Overexpressed in tumors, including melanomas, cancers of the colon, pancreas prostate and kidney.

**IGF1 Receptor (IGF1R) Antibody (N-term) - Protocols**

Provided below are standard protocols that you may find useful for product applications.

- [Western Blot](#)
- [Blocking Peptides](#)
- [Dot Blot](#)
- [Immunohistochemistry](#)
- [Immunofluorescence](#)
- [Immunoprecipitation](#)
- [Flow Cytometry](#)
- [Cell Culture](#)

**IGF1 Receptor (IGF1R) Antibody (N-term) - Citations**

- [Cezanne contributes to cancer progression by playing a key role in the deubiquitination of IGF-1R](#)
- [Growth-suppressing function of glypican-3 \(GPC3\) via insulin like growth factor II \(IGF-II\) signaling pathway in ovarian clear cell carcinoma cells.](#)
- [Elevated IGFIR expression regulating VEGF and VEGF-C predicts lymph node metastasis in human colorectal cancer.](#)