

CPE Antibody (C-term)
Purified Rabbit Polyclonal Antibody (Pab)
Catalog # AP7657b

Specification

CPE Antibody (C-term) - Product Information

Application	WB,E
Primary Accession	P16870
Other Accession	Q4R4M3 , P04836
Reactivity	Human, Mouse
Predicted	Bovine, Monkey
Host	Rabbit
Clonality	Polyclonal
Isotype	Rabbit Ig
Calculated MW	53151
Antigen Region	381-412

CPE Antibody (C-term) - Additional Information

Gene ID 1363

Other Names

Carboxypeptidase E, CPE,
Carboxypeptidase H, CPH, Enkephalin
convertase, Prohormone-processing
carboxypeptidase, CPE

Target/Specificity

This CPE antibody is generated from rabbits immunized with a KLH conjugated synthetic peptide between 381-412 amino acids from the C-terminal region of human CPE.

Dilution

WB~~1:1000

Format

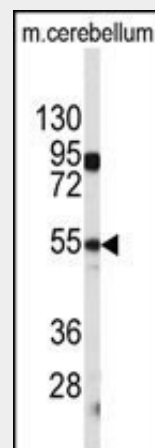
Purified polyclonal antibody supplied in PBS with 0.09% (W/V) sodium azide. This antibody is prepared by Saturated Ammonium Sulfate (SAS) precipitation followed by dialysis against PBS.

Storage

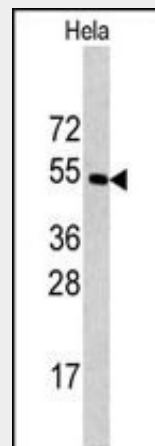
Maintain refrigerated at 2-8°C for up to 2 weeks. For long term storage store at -20°C in small aliquots to prevent freeze-thaw cycles.

Precautions

CPE Antibody (C-term) is for research use



Western blot analysis of CPE antibody (C-term) (Cat.#AP7657b) in mouse cerebellum tissue lysates (35ug/lane). CPE (arrow) was detected using the purified Pab.



Western blot analysis of CPE antibody (C-term)(Cat.#AP7657b) in Hela cell line lysates (35ug/lane). CPE (arrow) was detected using the purified Pab.

CPE Antibody (C-term) - Background

CPE is a carboxypeptidase that cleaves C-terminal amino acid residues and is involved in the biosynthesis of peptide hormones and neurotransmitters, including insulin. It is a peripheral membrane protein. The protein

only and not for use in diagnostic or therapeutic procedures.

CPE Antibody (C-term) - Protein Information

Name CPE

Function

Sorting receptor that directs prohormones to the regulated secretory pathway. Acts also as a prohormone processing enzyme in neuro/endocrine cells, removing dibasic residues from the C-terminal end of peptide hormone precursors after initial endoprotease cleavage.

Cellular Location

[Isoform 1]: Cytoplasmic vesicle, secretory vesicle {ECO:0000250|UniProtKB:Q00493}.
Cytoplasmic vesicle, secretory vesicle membrane {ECO:0000250|UniProtKB:P15087};
Peripheral membrane protein {ECO:0000250|UniProtKB:P15087}.
Secreted {ECO:0000250|UniProtKB:P15087}.
Note=Associated with the secretory granule membrane through direct binding to lipid rafts in intragranular conditions.
{ECO:0000250|UniProtKB:Q00493}

specifically binds regulated secretory pathway proteins, including prohormones, but not constitutively secreted proteins. Mutations in CPE gene are implicated in type II diabetes.

CPE Antibody (C-term) - References

Oiso,S., J. Neurochem. 109 (1), 158-167 (2009)
Yang,L., Ann. N. Y. Acad. Sci. 1150, 263-266 (2008)
Jeffrey,K.D., Proc. Natl. Acad. Sci. U.S.A. 105 (24), 8452-8457 (2008)

CPE Antibody (C-term) - Protocols

Provided below are standard protocols that you may find useful for product applications.

- [Western Blot](#)
- [Blocking Peptides](#)
- [Dot Blot](#)
- [Immunohistochemistry](#)
- [Immunofluorescence](#)
- [Immunoprecipitation](#)
- [Flow Cytometry](#)
- [Cell Culture](#)