

**NRAS Antibody (C-term)**  
**Purified Rabbit Polyclonal Antibody (Pab)**  
**Catalog # AP7745b**

**Specification**

**NRAS Antibody (C-term) - Product Information**

Application	WB,E
Primary Accession	<a href="#">P01111</a>
Other Accession	<a href="#">Q2MJK3</a>
Reactivity	Human
Predicted	Pig
Host	Rabbit
Clonality	Polyclonal
Isotype	Rabbit Ig
Calculated MW	21229
Antigen Region	147-179

**NRAS Antibody (C-term) - Additional Information**

**Gene ID** 4893

**Other Names**

GTPase NRas, Transforming protein N-Ras, NRAS, HRAS1

**Target/Specificity**

This NRAS antibody is generated from rabbits immunized with a KLH conjugated synthetic peptide between 147-179 amino acids from the C-terminal region of human NRAS.

**Dilution**

WB~1:2000

**Format**

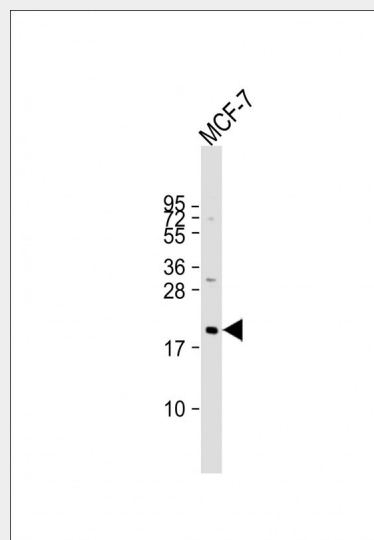
Purified polyclonal antibody supplied in PBS with 0.09% (W/V) sodium azide. This antibody is prepared by Saturated Ammonium Sulfate (SAS) precipitation followed by dialysis against PBS.

**Storage**

Maintain refrigerated at 2-8°C for up to 2 weeks. For long term storage store at -20°C in small aliquots to prevent freeze-thaw cycles.

**Precautions**

NRAS Antibody (C-term) is for research use only and not for use in diagnostic or



Anti-NRAS Antibody (C-term) at 1:2000 dilution + MCF-7 whole cell lysate  
Lysates/proteins at 20 µg per lane.  
Secondary Goat Anti-Rabbit IgG, (H+L), Peroxidase conjugated at 1/10000 dilution.  
Predicted band size : 21 kDa  
Blocking/Dilution buffer: 5% NFDM/TBST.

**NRAS Antibody (C-term) - Background**

NRAS is a membrane protein that shuttles between the Golgi apparatus and the plasma membrane. This shuttling is regulated through palmitoylation and depalmitoylation by the ZDHHC9-GOLGA7 complex. This protein, which has intrinsic GTPase activity, is activated to a GTP-bound form by a GTPase activating protein and inactivated to a GDP-bound form by a guanine nucleotide-exchange factor. Defects in the gene encoding this protein are a cause of juvenile myelomonocytic leukemia (JMML).

**NRAS Antibody (C-term) - References**

Smalley,K.S., Cancer Res. 68 (14), 5743-5752 (2008)  
Banerji,U., Mol. Cancer Ther. 7 (4), 737-739 (2008)

therapeutic procedures.

#### **NRAS Antibody (C-term) - Protein Information**

**Name** NRAS

**Synonyms** HRAS1

#### **Function**

Ras proteins bind GDP/GTP and possess intrinsic GTPase activity.

#### **Cellular Location**

Cell membrane; Lipid-anchor; Cytoplasmic side. Golgi apparatus membrane; Lipid-anchor Note=Shuttles between the plasma membrane and the Golgi apparatus

#### **NRAS Antibody (C-term) - Protocols**

Provided below are standard protocols that you may find useful for product applications.

- [Western Blot](#)
- [Blocking Peptides](#)
- [Dot Blot](#)
- [Immunohistochemistry](#)
- [Immunofluorescence](#)
- [Immunoprecipitation](#)
- [Flow Cytometry](#)
- [Cell Culture](#)