

SEMA3A Antibody (Center)
Purified Rabbit Polyclonal Antibody (Pab)
Catalog # AP7760c

Specification

SEMA3A Antibody (Center) - Product Information

Application	WB, IHC-P,E
Primary Accession	Q14563
Other Accession	Q63548 , Q08665 , Q90607
Reactivity	Human
Predicted	Chicken, Mouse, Rat
Host	Rabbit
Clonality	Polyclonal
Isotype	Rabbit Ig
Antigen Region	535-566

SEMA3A Antibody (Center) - Additional Information

Gene ID 10371

Other Names

Semaphorin-3A, Semaphorin III, Sema III, SEMA3A, SEMAD

Target/Specificity

This SEMA3A antibody is generated from rabbits immunized with a KLH conjugated synthetic peptide between 535-566 amino acids from the Central region of human SEMA3A.

Dilution

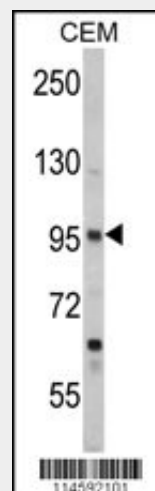
WB~~1:1000
IHC-P~~1:10~50

Format

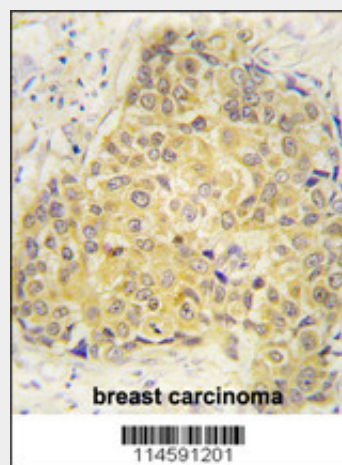
Purified polyclonal antibody supplied in PBS with 0.09% (W/V) sodium azide. This antibody is prepared by Saturated Ammonium Sulfate (SAS) precipitation followed by dialysis against PBS.

Storage

Maintain refrigerated at 2-8°C for up to 2 weeks. For long term storage store at -20°C in small aliquots to prevent freeze-thaw cycles.



Western blot analysis of SEMA3A Antibody (Center) (Cat. #AP7760c) in CEM cell line lysates (35ug/lane). SEMA3A (arrow) was detected using the purified Pab.



Formalin-fixed and paraffin-embedded human breast carcinoma tissue reacted with SEMA3A antibody (Center) (Cat.#AP7760c), which was peroxidase-conjugated to the secondary antibody, followed by DAB staining. This data demonstrates the use of this antibody for immunohistochemistry; clinical relevance has not been evaluated.

SEMA3A Antibody (Center) - Background

Precautions

SEMA3A Antibody (Center) is for research use only and not for use in diagnostic or therapeutic procedures.

SEMA3A Antibody (Center) - Protein Information

Name SEMA3A

Synonyms SEMAD

Function

Involved in the development of the olfactory system and in neuronal control of puberty. Induces the collapse and paralysis of neuronal growth cones. Could serve as a ligand that guides specific growth cones by a motility-inhibiting mechanism. Binds to the complex neuropilin-1/plexin-1.

Cellular Location

Secreted.

Tissue Location

Expressed in the dorsal root ganglia.

SEMA3A is a member of the semaphorin family with an Ig-like C2-type (immunoglobulin-like) domain, a PSI domain and a Sema domain. This secreted protein can function as either a chemorepulsive agent, inhibiting axonal outgrowth, or as a chemoattractive agent, stimulating the growth of apical dendrites. In both cases, the protein is vital for normal neuronal pattern development. Increased expression of this protein is associated with schizophrenia and is seen in a variety of human tumor cell lines. Also, aberrant release of this protein is associated with the progression of Alzheimer's disease.

SEMA3A Antibody (Center) - References

Narazaki,M., Blood 111 (8), 4126-4136 (2008)
Tannemaat,M.R., J. Neurosci. 27 (52), 14260-14264 (2007)
Appleton,B.A., EMBO J. 26 (23), 4902-4912 (2007)

SEMA3A Antibody (Center) - Protocols

Provided below are standard protocols that you may find useful for product applications.

- [Western Blot](#)
- [Blocking Peptides](#)
- [Dot Blot](#)
- [Immunohistochemistry](#)
- [Immunofluorescence](#)
- [Immunoprecipitation](#)
- [Flow Cytometry](#)
- [Cell Culture](#)