

**NTF3 Antibody (Center)**  
**Purified Rabbit Polyclonal Antibody (Pab)**  
**Catalog # AP7763c**

**Specification**

**NTF3 Antibody (Center) - Product Information**

Application	<b>WB, IHC-P,E</b>
Primary Accession	<a href="#">P20783</a>
Other Accession	<a href="#">P18280</a> , <a href="#">Q06AV0</a> , <a href="#">P20181</a> , <a href="#">P25433</a> , <a href="#">Q08DT3</a>
Reactivity	<b>Human</b>
Predicted	<b>Bovine, Chicken, Mouse, Pig, Rat</b>
Host	<b>Rabbit</b>
Clonality	<b>Polyclonal</b>
Isotype	<b>Rabbit Ig</b>
Calculated MW	<b>29355</b>
Antigen Region	<b>122-151</b>

**NTF3 Antibody (Center) - Additional Information**

**Gene ID 4908**

**Other Names**

Neurotrophin-3, NT-3, HDNF, Nerve growth factor 2, NGF-2, Neurotrophic factor, NTF3

**Target/Specificity**

This NTF3 antibody is generated from rabbits immunized with a KLH conjugated synthetic peptide between 122-151 amino acids from the Central region of human NTF3.

**Dilution**

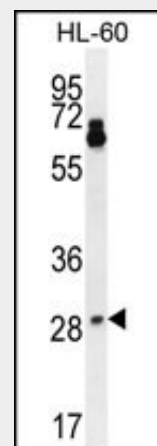
WB~~1:1000  
IHC-P~~1:10~50

**Format**

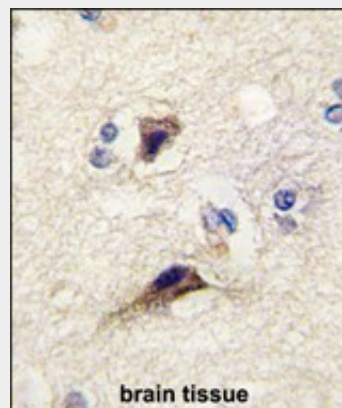
Purified polyclonal antibody supplied in PBS with 0.09% (W/V) sodium azide. This antibody is prepared by Saturated Ammonium Sulfate (SAS) precipitation followed by dialysis against PBS.

**Storage**

Maintain refrigerated at 2-8°C for up to 2 weeks. For long term storage store at -20°C in small aliquots to prevent freeze-thaw cycles.



NTF3 Antibody (Center) (Cat.#AP7763c) western blot analysis in HL-60 cell line lysates (35ug/lane). This demonstrates the NTF3 antibody detected the NTF3 protein (arrow).



Formalin-fixed and paraffin-embedded human brain tissue reacted with NTF3 antibody (Center) (Cat.#AP7763c), which was peroxidase-conjugated to the secondary antibody, followed by DAB staining. This data demonstrates the use of this antibody for immunohistochemistry; clinical relevance has not been evaluated.

**NTF3 Antibody (Center) - Background**

NTF3 is a member of the neurotrophin family that controls survival and differentiation of

**Precautions**

NTF3 Antibody (Center) is for research use only and not for use in diagnostic or therapeutic procedures.

**NTF3 Antibody (Center) - Protein Information****Name** NTF3**Function**

Seems to promote the survival of visceral and proprioceptive sensory neurons.

**Cellular Location**

Secreted.

**Tissue Location**

Brain and peripheral tissues.

mammalian neurons. This protein is closely related to both nerve growth factor and brain-derived neurotrophic factor. It may be involved in the maintenance of the adult nervous system, and may affect development of neurons in the embryo when it is expressed in human placenta. NTF3-deficient mice generated by gene targeting display severe movement defects of the limbs. The mature peptide of this protein is identical in all mammals examined including human, pig, rat and mouse.

**NTF3 Antibody (Center) - References**

Hossain,W.A., J. Neurosci. Res. 86 (11), 2376-2391 (2008)  
Mercader,J.M., Hum. Mol. Genet. 17 (9), 1234-1244 (2008)  
Kalchauer,C.,Proc. Natl. Acad. Sci. U.S.A. 89 (5), 1661-1665 (1992)

**NTF3 Antibody (Center) - Protocols**

Provided below are standard protocols that you may find useful for product applications.

- [Western Blot](#)
- [Blocking Peptides](#)
- [Dot Blot](#)
- [Immunohistochemistry](#)
- [Immunofluorescence](#)
- [Immunoprecipitation](#)
- [Flow Cytometry](#)
- [Cell Culture](#)