

CAMKK1 Antibody (Center)
Purified Rabbit Polyclonal Antibody (Pab)
Catalog # AP7768c

Specification

CAMKK1 Antibody (Center) - Product Information

Application	WB,E
Primary Accession	Q8N5S9
Reactivity	Human, Mouse
Host	Rabbit
Clonality	Polyclonal
Isotype	Rabbit Ig
Calculated MW	55735
Antigen Region	337-369

CAMKK1 Antibody (Center) - Additional Information

Gene ID 84254

Other Names

Calcium/calmodulin-dependent protein kinase kinase 1, CaM-KK 1, CaM-kinase kinase 1, CaMKK 1, CaM-kinase IV kinase, Calcium/calmodulin-dependent protein kinase kinase alpha, CaM-KK alpha, CaM-kinase kinase alpha, CaMKK alpha, CAMKK1, CAMKKA

Target/Specificity

This CAMKK1 antibody is generated from rabbits immunized with a KLH conjugated synthetic peptide between 337-369 amino acids from the Central region of human CAMKK1.

Dilution

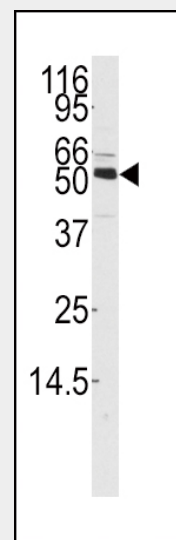
WB~~1:1000

Format

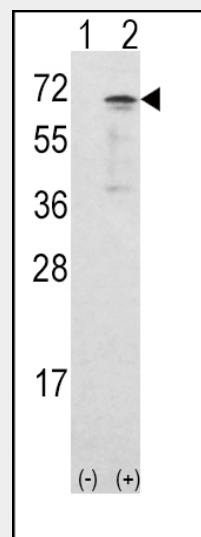
Purified polyclonal antibody supplied in PBS with 0.09% (W/V) sodium azide. This antibody is prepared by Saturated Ammonium Sulfate (SAS) precipitation followed by dialysis against PBS.

Storage

Maintain refrigerated at 2-8°C for up to 2 weeks. For long term storage store at -20°C in small aliquots to prevent freeze-thaw cycles.



Western blot analysis of anti-CAMKK1 Antibody (Center) (Cat.#AP7768c) in mouse thymus tissue lysates (35ug/lane). CAMKK1 (arrow) was detected using the purified Pab.



Western blot analysis of CAMKK1 (arrow) using rabbit polyclonal CAMKK1 Antibody (Center) (Cat.#AP7768c). 293 cell lysates (2 ug/lane) either nontransfected (Lane 1) or transiently transfected with the CAMKK1 gene (Lane 2).

Precautions

CAMKK1 Antibody (Center) is for research use only and not for use in diagnostic or therapeutic procedures.

CAMKK1 Antibody (Center) - Protein Information

Name CAMKK1

Synonyms CAMKKA

Function

Calcium/calmodulin-dependent protein kinase that belongs to a proposed calcium-triggered signaling cascade involved in a number of cellular processes. Phosphorylates CAMK1, CAMK1D, CAMK1G and CAMK4. Involved in regulating cell apoptosis. Promotes cell survival by phosphorylating AKT1/PKB that inhibits pro-apoptotic BAD/Bcl2- antagonist of cell death.

Cellular Location

Cytoplasm. Nucleus.

CAMKK1 Antibody (Center) - Background

CAMKK1 belongs to the Serine/Threonine protein kinase family, and to the Ca(2+)/calmodulin-dependent protein kinase subfamily. This protein plays a role in the calcium/calmodulin-dependent (CaM) kinase cascade.

CAMKK1 Antibody (Center) - References

Guest,C.B., PLoS ONE 3 (2), E1606 (2008)
Rudd,M.F., Genome Res. 16 (6), 693-701 (2006)
Ishikawa,Y., FEBS Lett. 550 (1-3), 57-63 (2003)
Matsushita,M., J. Biol. Chem. 274 (15), 10086-10093 (1999)

CAMKK1 Antibody (Center) - Protocols

Provided below are standard protocols that you may find useful for product applications.

- [Western Blot](#)
- [Blocking Peptides](#)
- [Dot Blot](#)
- [Immunohistochemistry](#)
- [Immunofluorescence](#)
- [Immunoprecipitation](#)
- [Flow Cytometry](#)
- [Cell Culture](#)