

**AREG Antibody (C-term)**  
**Purified Rabbit Polyclonal Antibody (Pab)**  
**Catalog # AP7776b**

**Specification**

**AREG Antibody (C-term) - Product Information**

Application	<b>WB, IHC-P,E</b>
Primary Accession	<a href="#">P15514</a>
Other Accession	<a href="#">NP_001648</a>
Reactivity	<b>Human</b>
Host	<b>Rabbit</b>
Clonality	<b>Polyclonal</b>
Isotype	<b>Rabbit Ig</b>
Calculated MW	<b>27895</b>
Antigen Region	<b>222-252</b>

**AREG Antibody (C-term) - Additional Information**

**Gene ID 374**

**Other Names**

Amphiregulin, AR, Colorectum cell-derived growth factor, CRDGF, AREG, SDGF

**Target/Specificity**

This AREG antibody is generated from rabbits immunized with a KLH conjugated synthetic peptide between 222-252 amino acids from the C-terminal region of human AREG.

**Dilution**

WB~~1:1000  
IHC-P~~1:10~50

**Format**

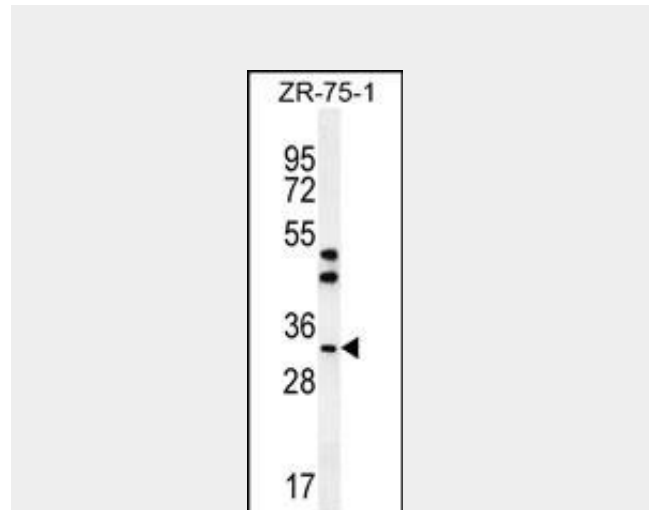
Purified polyclonal antibody supplied in PBS with 0.09% (W/V) sodium azide. This antibody is prepared by Saturated Ammonium Sulfate (SAS) precipitation followed by dialysis against PBS.

**Storage**

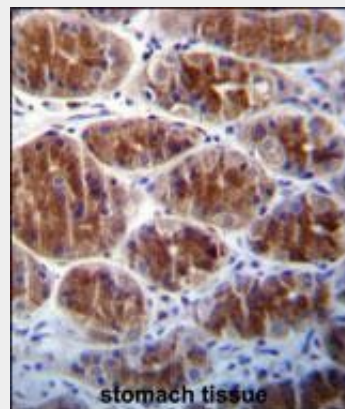
Maintain refrigerated at 2-8°C for up to 2 weeks. For long term storage store at -20°C in small aliquots to prevent freeze-thaw cycles.

**Precautions**

AREG Antibody (C-term) is for research use only and not for use in diagnostic or



AREG Antibody (C-term) (Cat.#AP7776b) western blot analysis in ZR-75-1 cell line lysates (35ug/lane).This demonstrates the AREG antibody detected the AREG protein (arrow).



AREG Antibody (C-term) (Cat. #AP7776b)immunohistochemistry analysis in formalin fixed and paraffin embedded human stomach tissue followed by peroxidase conjugation of the secondary antibody and DAB staining.This data demonstrates the use of AREG Antibody (C-term) for immunohistochemistry. Clinical relevance has not been evaluated.

**AREG Antibody (C-term) - Background**

therapeutic procedures.

#### **AREG Antibody (C-term) - Protein Information**

**Name** AREG ([HGNC:651](#))

#### **Function**

Ligand of the EGF receptor/EGFR. Autocrine growth factor as well as a mitogen for a broad range of target cells including astrocytes, Schwann cells and fibroblasts.

#### **Cellular Location**

Membrane; Single-pass membrane protein.

#### **AREG Antibody (C-term) - Protocols**

Provided below are standard protocols that you may find useful for product applications.

- [Western Blot](#)
- [Blocking Peptides](#)
- [Dot Blot](#)
- [Immunohistochemistry](#)
- [Immunofluorescence](#)
- [Immunoprecipitation](#)
- [Flow Cytometry](#)
- [Cell Culture](#)

AREG is a member of the epidermal growth factor family. It is an autocrine growth factor as well as a mitogen for astrocytes, Schwann cells, and fibroblasts. It is related to epidermal growth factor (EGF) and transforming growth factor alpha (TGF-alpha). This protein interacts with the EGF/TGF-alpha receptor to promote the growth of normal epithelial cells and inhibits the growth of certain aggressive carcinoma cell lines. This protein is associated with a psoriasis-like skin phenotype.

#### **AREG Antibody (C-term) - References**

- Shim,J.Y., J. Korean Med. Sci. 23 (5), 857-863 (2008)  
Eckstein,N., J. Biol. Chem. 283 (2), 739-750 (2008)  
Revillion,F., Ann. Oncol. 19 (1), 73-80 (2008)  
Kimura,H., Nature 348 (6298), 257-260 (1990)