

IRS2 Antibody (C-term)
Purified Rabbit Polyclonal Antibody (Pab)
Catalog # AP7789B

Specification

IRS2 Antibody (C-term) - Product Information

Application	IF, WB, IHC-P,E
Primary Accession	Q9Y4H2
Reactivity	Human
Host	Rabbit
Clonality	Polyclonal
Isotype	Rabbit Ig
Calculated MW	137334
Antigen Region	1309-1338

IRS2 Antibody (C-term) - Additional Information

Gene ID 8660

Other Names

Insulin receptor substrate 2, IRS-2, IRS2

Target/Specificity

This IRS2 antibody is generated from rabbits immunized with a KLH conjugated synthetic peptide between 1309-1338 amino acids from the C-terminal region of human IRS2.

Dilution

IF~~1:10~50
WB~~1:1000
IHC-P~~1:50~100

Format

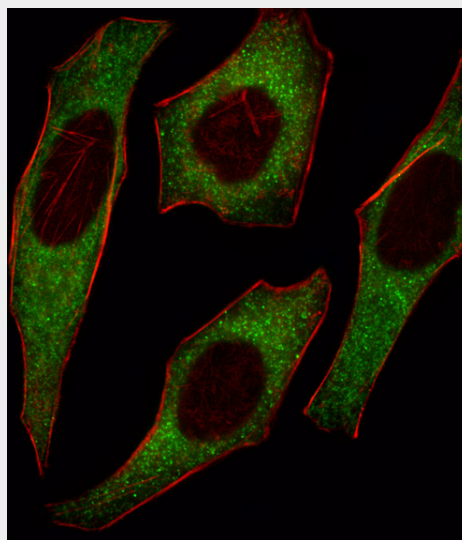
Purified polyclonal antibody supplied in PBS with 0.09% (W/V) sodium azide. This antibody is prepared by Saturated Ammonium Sulfate (SAS) precipitation followed by dialysis against PBS.

Storage

Maintain refrigerated at 2-8°C for up to 2 weeks. For long term storage store at -20°C in small aliquots to prevent freeze-thaw cycles.

Precautions

IRS2 Antibody (C-term) is for research use only and not for use in diagnostic or therapeutic procedures.



Fluorescent image of HeLa cell stained with IRS2 Antibody (C-term)(Cat#AP7789b). HeLa cells were fixed with 4% PFA (20 min), permeabilized with Triton X-100 (0.1%, 10 min), then incubated with IRS2 primary antibody (1:25, 1 h at 37°C). For secondary antibody, Alexa Fluor® 488 conjugated donkey anti-rabbit antibody (green) was used (1:400, 50 min at 37°C). Cytoplasmic actin was counterstained with Alexa Fluor® 555 (red) conjugated Phalloidin (7units/ml, 1 h at 37°C). IRS2 immunoreactivity is localized to Cytoplasm significantly.

IRS2 Antibody (C-term) - Protein Information

Name IRS2

Function

May mediate the control of various cellular processes by insulin.

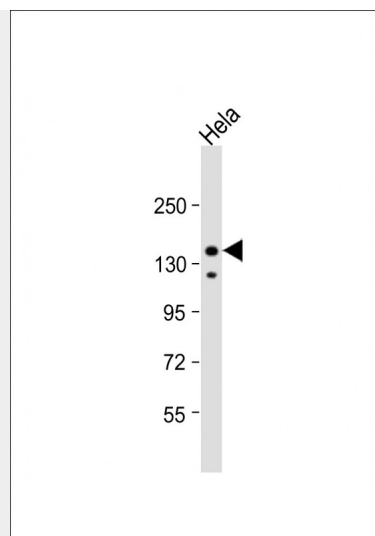
Cellular Location

Cytoplasm, cytosol.

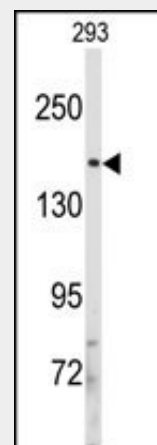
IRS2 Antibody (C-term) - Protocols

Provided below are standard protocols that you may find useful for product applications.

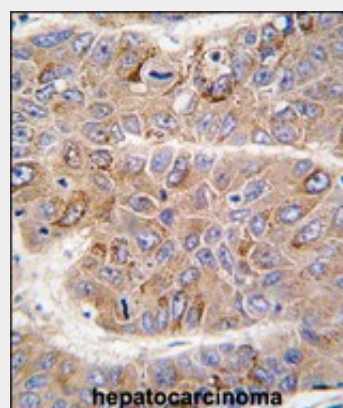
- [Western Blot](#)
- [Blocking Peptides](#)
- [Dot Blot](#)
- [Immunohistochemistry](#)
- [Immunofluorescence](#)
- [Immunoprecipitation](#)
- [Flow Cytometry](#)
- [Cell Culture](#)



Anti-IRS2 Antibody (C-term) at 1:1000 dilution + HeLa whole cell lysate
Lysates/proteins at 20 µg per lane.
Secondary Goat Anti-Rabbit IgG, (H+L), Peroxidase conjugated at 1/10000 dilution.
Predicted band size : 137 kDa
Blocking/Dilution buffer: 5% NFDM/TBST.



Western blot analysis of anti-IRS2 Antibody (C-term) (Cat.#AP7789b) in 293 cell line lysates (35ug/lane). IRS2 (arrow) was detected using the purified Pab.



Formalin-fixed and paraffin-embedded human hepatocarcinoma tissue reacted with IRS2 antibody (C-term), which was peroxidase-conjugated to the secondary antibody, followed by DAB staining. This data demonstrates the use of this antibody for immunohistochemistry; clinical relevance has not been evaluated.

IRS2 Antibody (C-term) - Background

Insulin receptor substrate 2, a cytoplasmic signaling molecule that mediates effects of insulin, insulin-like growth factor 1, and other cytokines by acting as a molecular adaptor between diverse receptor tyrosine kinases and downstream effectors. This protein is phosphorylated by the insulin receptor tyrosine kinase upon receptor stimulation, as well as by an interleukin 4 receptor-associated kinase in response to IL4 treatment.

IRS2 Antibody (C-term) - References

Hagg,D.A., Int. J. Mol. Med. 21 (6), 697-704 (2008)
Platanias,L.C., J. Biol. Chem. 271 (1), 278-282 (1996)
Sun,X.J., Nature 377 (6545), 173-177 (1995)