

**ACTN4 Antibody (N-term)**  
**Purified Rabbit Polyclonal Antibody (Pab)**  
**Catalog # AP7790a**

**Specification**

**ACTN4 Antibody (N-term) - Product Information**

Application	WB,E
Primary Accession	<a href="#">O43707</a>
Other Accession	<a href="#">Q9QXQ0</a> , <a href="#">P57780</a> , <a href="#">Q90734</a> , <a href="#">A5D7D1</a>
Reactivity	Human
Predicted	Bovine, Chicken, Mouse, Rat
Host	Rabbit
Clonality	Polyclonal
Isotype	Rabbit Ig
Antigen Region	192-220

**ACTN4 Antibody (N-term) - Additional Information**

**Gene ID 81**

**Other Names**

Alpha-actinin-4, F-actin cross-linking protein, Non-muscle alpha-actinin 4, ACTN4

**Target/Specificity**

This ACTN4 antibody is generated from rabbits immunized with a KLH conjugated synthetic peptide between 192-220 amino acids from the N-terminal region of human ACTN4.

**Dilution**

WB~~1:1000

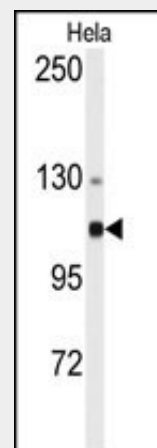
**Format**

Purified polyclonal antibody supplied in PBS with 0.09% (W/V) sodium azide. This antibody is prepared by Saturated Ammonium Sulfate (SAS) precipitation followed by dialysis against PBS.

**Storage**

Maintain refrigerated at 2-8°C for up to 2 weeks. For long term storage store at -20°C in small aliquots to prevent freeze-thaw cycles.

**Precautions**



Western blot analysis of anti-ACTN4 Antibody (N-term) (Cat.#AP7790a) in HeLa cell line lysates (35ug/lane). ACTN4 (arrow) was detected using the purified Pab.

**ACTN4 Antibody (N-term) - Background**

Alpha actinins belong to the spectrin gene superfamily which represents a diverse group of cytoskeletal proteins, including the alpha and beta spectrins and dystrophins. Alpha actinin is an actin-binding protein with multiple roles in different cell types. In nonmuscle cells, the cytoskeletal isoform is found along microfilament bundles and adherens-type junctions, where it is involved in binding actin to the membrane. In contrast, skeletal, cardiac, and smooth muscle isoforms are localized to the Z-disc and analogous dense bodies, where they help anchor the myofibrillar actin filaments. This protein is a nonmuscle, alpha actinin isoform which is concentrated in the cytoplasm, and is thought to be involved in metastatic processes. Mutations in the gene encoding this protein have been associated with focal and segmental glomerulosclerosis.

**ACTN4 Antibody (N-term) - References**

Kikuchi,S., Clin. Cancer Res. 14 (17), 5348-5356 (2008)

ACTN4 Antibody (N-term) is for research use only and not for use in diagnostic or therapeutic procedures.

Barbolina, M.V., Lab. Invest. 88 (6), 602-614 (2008)  
Kimura, M., Intern. Med. 47 (12), 1099-1106 (2008)

#### **ACTN4 Antibody (N-term) - Protein Information**

**Name** ACTN4 ([HGNC:166](#))

##### **Function**

F-actin cross-linking protein which is thought to anchor actin to a variety of intracellular structures. This is a bundling protein (Probable). Probably involved in vesicular trafficking via its association with the CART complex. The CART complex is necessary for efficient transferrin receptor recycling but not for EGFR degradation (PubMed: <a href="http://www.uniprot.org/citations/15772161" target="\_blank">15772161</a>). Involved in tight junction assembly in epithelial cells probably through interaction with MICALL2. Links MICALL2 to the actin cytoskeleton and recruits it to the tight junctions (By similarity). May also function as a transcriptional coactivator, stimulating transcription mediated by the nuclear hormone receptors PPARG and RARA (PubMed: <a href="http://www.uniprot.org/citations/22351778" target="\_blank">22351778</a>).

##### **Cellular Location**

Nucleus. Cytoplasm. Cell junction {ECO:0000250|UniProtKB:P57780}. Cytoplasm, cytoskeleton, stress fiber. Note=Localized in cytoplasmic mRNP granules containing untranslated mRNAs. Nuclear translocation can be induced by the PI3 kinase inhibitor wortmannin or by cytochalasin D Exclusively localized in the nucleus in a limited number of cell lines (breast cancer cell line MCF-7, oral floor cancer IMC-2, and bladder cancer KU-7).

##### **Tissue Location**

Widely expressed..

#### **ACTN4 Antibody (N-term) - Protocols**

Provided below are standard protocols that you may find useful for product applications.

- [Western Blot](#)

- [Blocking Peptides](#)
- [Dot Blot](#)
- [Immunohistochemistry](#)
- [Immunofluorescence](#)
- [Immunoprecipitation](#)
- [Flow Cytometry](#)
- [Cell Culture](#)