

ACE Antibody (C-term)
Purified Rabbit Polyclonal Antibody (Pab)
Catalog # AP7793b

Specification

ACE Antibody (C-term) - Product Information

Application	WB,E
Primary Accession	P12821
Reactivity	Human, Mouse
Host	Rabbit
Clonality	Polyclonal
Isotype	Rabbit Ig
Calculated MW	149715
Antigen Region	1274-1306

ACE Antibody (C-term) - Additional Information

Gene ID 1636

Other Names

Angiotensin-converting enzyme, ACE, 321-,
Dipeptidyl carboxypeptidase I, Kininase II,
CD143, Angiotensin-converting enzyme,
soluble form, ACE, DCP, DCP1

Target/Specificity

This ACE antibody is generated from rabbits immunized with a KLH conjugated synthetic peptide between 1274-1306 amino acids from the C-terminal region of human ACE.

Dilution

WB~~1:1000

Format

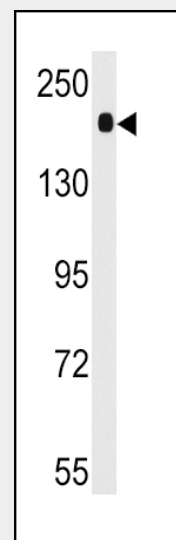
Purified polyclonal antibody supplied in PBS with 0.09% (W/V) sodium azide. This antibody is prepared by Saturated Ammonium Sulfate (SAS) precipitation followed by dialysis against PBS.

Storage

Maintain refrigerated at 2-8°C for up to 2 weeks. For long term storage store at -20°C in small aliquots to prevent freeze-thaw cycles.

Precautions

ACE Antibody (C-term) is for research use only and not for use in diagnostic or therapeutic procedures.



Western blot analysis of anti-ACE Antibody (C-term) (Cat.#AP7793b) in mouse lung tissue lysates (35ug/lane). ACE (arrow) was detected using the purified Pab.

ACE Antibody (C-term) - Background

ACE is an enzyme involved in catalyzing the conversion of angiotensin I into a physiologically active peptide angiotensin II. Angiotensin II is a potent vasopressor and aldosterone-stimulating peptide that controls blood pressure and fluid-electrolyte balance. This enzyme plays a key role in the renin-angiotensin system. Many studies have associated the presence or absence of a 287 bp Alu repeat element in this gene with the levels of circulating enzyme or cardiovascular pathophysiology. Two most abundant alternatively spliced variants of this gene encode two isoforms - the somatic form and the testicular form that are equally active.

ACE Antibody (C-term) - References

du Cheyron,D.,Crit. Care Med. 36 (12), 3178-3183 (2008)
Pang,S., Biochem. J. 358 (PT 1), 185-192

ACE Antibody (C-term) - Protein Information

(2001)

Woodman,Z.L., Biochem. J. 347 PT 3, 711-718
(2000)**Name** ACE**Synonyms** DCP, DCP1**Function**

Converts angiotensin I to angiotensin II by release of the terminal His-Leu, this results in an increase of the vasoconstrictor activity of angiotensin. Also able to inactivate bradykinin, a potent vasodilator. Has also a glycosidase activity which releases GPI-anchored proteins from the membrane by cleaving the mannose linkage in the GPI moiety.

Cellular Location

[Angiotensin-converting enzyme, soluble form]: Secreted

Tissue Location

Ubiquitously expressed, with highest levels in lung, kidney, heart, gastrointestinal system and prostate. Isoform Testis-specific is expressed in spermatocytes and adult testis

ACE Antibody (C-term) - Protocols

Provided below are standard protocols that you may find useful for product applications.

- [Western Blot](#)
- [Blocking Peptides](#)
- [Dot Blot](#)
- [Immunohistochemistry](#)
- [Immunofluorescence](#)
- [Immunoprecipitation](#)
- [Flow Cytometry](#)
- [Cell Culture](#)