

**BCHE Antibody (Center)**  
**Purified Rabbit Polyclonal Antibody (Pab)**  
**Catalog # AP7829c**

**Specification**

**BCHE Antibody (Center) - Product Information**

Application	<b>WB,E</b>
Primary Accession	<a href="#">P06276</a>
Reactivity	<b>Human</b>
Host	<b>Rabbit</b>
Clonality	<b>Polyclonal</b>
Isotype	<b>Rabbit Ig</b>
Calculated MW	<b>68418</b>
Antigen Region	<b>385-415</b>

**BCHE Antibody (Center) - Additional Information**

**Gene ID 590**

**Other Names**

Cholinesterase, Acylcholine acylhydrolase, Butyrylcholine esterase, Choline esterase II, Pseudocholinesterase, BCHE, CHE1

**Target/Specificity**

This BCHE antibody is generated from rabbits immunized with a KLH conjugated synthetic peptide between 385-415 amino acids from the Central region of human BCHE.

**Dilution**

WB~~1:1000

**Format**

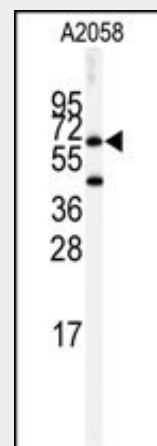
Purified polyclonal antibody supplied in PBS with 0.09% (W/V) sodium azide. This antibody is prepared by Saturated Ammonium Sulfate (SAS) precipitation followed by dialysis against PBS.

**Storage**

Maintain refrigerated at 2-8°C for up to 2 weeks. For long term storage store at -20°C in small aliquots to prevent freeze-thaw cycles.

**Precautions**

BCHE Antibody (Center) is for research use only and not for use in diagnostic or therapeutic procedures.



Western blot analysis of anti-BCHE Antibody (Center)(Cat.#AP7829c) in A2058 cell line lysates (35ug/lane). BCHE (arrow) was detected using the purified Pab.

**BCHE Antibody (Center) - Background**

Mutant proteins of BCHE are responsible for suxamethonium sensitivity. Homozygous persons sustain prolonged apnea after administration of the muscle relaxant suxamethonium in connection with surgical anesthesia. The activity of pseudocholinesterase in the serum is low and its substrate behavior is atypical. In the absence of the relaxant, the homozygote is at no known disadvantage.

**BCHE Antibody (Center) - References**

- Primo-Parmo S.L., Bartels C.F.Am. J. Hum. Genet. 58:52-64(1996)
- Primo-Parmo S.L., Lightstone H.Pharmacogenetics 7:27-34(1997)
- Yen T., Nightingale B.N.Clin. Chem. 49:1297-1308(2003)

**BCHE Antibody (Center) - Protein Information**

**Name** BCHE

**Synonyms** CHE1

**Function**

Esterase with broad substrate specificity. Contributes to the inactivation of the neurotransmitter acetylcholine. Can degrade neurotoxic organophosphate esters.

**Cellular Location**

Secreted

**Tissue Location**

Detected in blood plasma (at protein level).  
Present in most cells except erythrocytes

**BCHE Antibody (Center) - Protocols**

Provided below are standard protocols that you may find useful for product applications.

- [Western Blot](#)
- [Blocking Peptides](#)
- [Dot Blot](#)
- [Immunohistochemistry](#)
- [Immunofluorescence](#)
- [Immunoprecipitation](#)
- [Flow Cytometry](#)
- [Cell Culture](#)