

**BCL2L13 Antibody (Center)**  
**Purified Rabbit Polyclonal Antibody (Pab)**  
**Catalog # AP7878c**

**Specification**

**BCL2L13 Antibody (Center) - Product Information**

Application	WB,E
Primary Accession	<a href="#">Q9BXK5</a>
Reactivity	Human
Host	Rabbit
Clonality	Polyclonal
Isotype	Rabbit Ig
Calculated MW	52723
Antigen Region	197-225

**BCL2L13 Antibody (Center) - Additional Information**

**Gene ID** 23786

**Other Names**

Bcl-2-like protein 13, Bcl2-L-13, Bcl-rambo, Protein Mil1, BCL2L13, MIL1

**Target/Specificity**

This BCL2L13 antibody is generated from rabbits immunized with a KLH conjugated synthetic peptide between 197-225 amino acids from the Central region of human BCL2L13.

**Dilution**

WB~~1:1000

**Format**

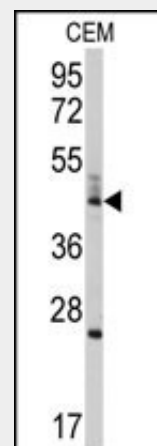
Purified polyclonal antibody supplied in PBS with 0.09% (W/V) sodium azide. This antibody is prepared by Saturated Ammonium Sulfate (SAS) precipitation followed by dialysis against PBS.

**Storage**

Maintain refrigerated at 2-8°C for up to 2 weeks. For long term storage store at -20°C in small aliquots to prevent freeze-thaw cycles.

**Precautions**

BCL2L13 Antibody (Center) is for research use only and not for use in diagnostic or therapeutic procedures.



Western blot analysis of anti-BCL2L13 Antibody (Center) (Cat.#AP7878c) in CEM cell line lysates (35ug/lane). BCL2L13(arrow) was detected using the purified Pab.

**BCL2L13 Antibody (Center) - Background**

BCL2L10 belongs to the BCL-2 protein family. BCL-2 family members form hetero- or homodimers and act as anti- or pro-apoptotic regulators that are involved in a wide variety of cellular activities. The protein may promote the activation of caspase-3 and apoptosis.

**BCL2L13 Antibody (Center) - References**

Banga,S., Proc. Natl. Acad. Sci. U.S.A. 104 (12), 5121-5126 (2007)  
Yi,P., FEBS Lett. 534 (1-3), 61-68 (2003)  
Kataoka,T., J. Biol. Chem. 276 (22), 19548-19554 (2001)

**BCL2L13 Antibody (Center) - Protein Information**

**Name** BCL2L13

**Synonyms** MIL1

**Function**

May promote the activation of caspase-3 and apoptosis.

**Cellular Location**

[Isoform 2]: Mitochondrion membrane; Single-pass membrane protein. Nucleus

**Tissue Location**

Ubiquitous, with the highest levels of expression in heart, placenta and pancreas

**BCL2L13 Antibody (Center) - Protocols**

Provided below are standard protocols that you may find useful for product applications.

- [Western Blot](#)
- [Blocking Peptides](#)
- [Dot Blot](#)
- [Immunohistochemistry](#)
- [Immunofluorescence](#)
- [Immunoprecipitation](#)
- [Flow Cytometry](#)
- [Cell Culture](#)