

**GSK3A Antibody (S21)**  
**Affinity Purified Rabbit Polyclonal Antibody (Pab)**  
**Catalog # AP8120c**

**Specification**

**GSK3A Antibody (S21) - Product Information**

Application	<b>WB,E</b>
Primary Accession	<a href="#">P49840</a>
Other Accession	<a href="#">P18265</a> , <a href="#">Q2NL51</a>
Reactivity	<b>Human</b>
Predicted	<b>Mouse, Rat</b>
Host	<b>Rabbit</b>
Clonality	<b>Polyclonal</b>
Isotype	<b>Rabbit Ig</b>
Calculated MW	<b>50981</b>

**GSK3A Antibody (S21) - Additional Information**

**Gene ID 2931**

**Other Names**

Glycogen synthase kinase-3 alpha, GSK-3 alpha, Serine/threonine-protein kinase GSK3A, GSK3A

**Target/Specificity**

This GSK3A antibody is generated from rabbits immunized with a KLH conjugated synthetic peptide selected from amino acid residues surrounding S21 of human GSK3A.

**Dilution**

WB~~1:1000

**Format**

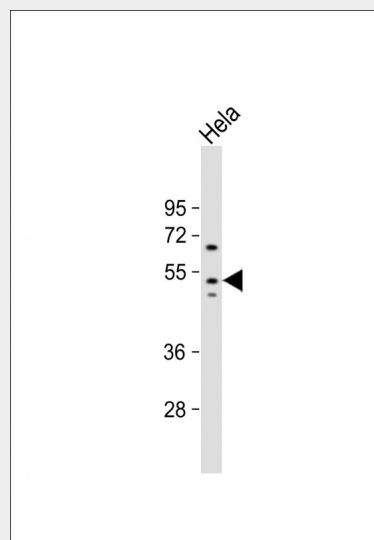
Purified polyclonal antibody supplied in PBS with 0.09% (W/V) sodium azide. This antibody is purified through a protein A column, followed by peptide affinity purification.

**Storage**

Maintain refrigerated at 2-8°C for up to 2 weeks. For long term storage store at -20°C in small aliquots to prevent freeze-thaw cycles.

**Precautions**

GSK3A Antibody (S21) is for research use only and not for use in diagnostic or therapeutic procedures.



Anti-GSK3A Antibody (S21) at 1:1000 dilution + HeLa whole cell lysate Lysates/proteins at 20 µg per lane. Secondary Goat Anti-Rabbit IgG, (H+L), Peroxidase conjugated at 1/10000 dilution. Predicted band size : 51 kDa  
Blocking/Dilution buffer: 5% NFDM/TBST.

**GSK3A Antibody (S21) - Background**

Glycogen synthase kinase 3-alpha (GSK3A) is a multifunctional protein serine kinase implicated in the control of several regulatory proteins including glycogen synthase and transcription factors. It also plays a role in the WNT and PI3K signaling pathways. Under resting conditions GSK3A and its homologs are highly phosphorylated at tyr279 in the phosphorylation loop. Constitutive phosphorylation of this tyrosine is important for kinase activity. Dephosphorylation of tyr279 after mitogen activation is accompanied by kinase inactivation. PKA as well as PI3K-activated PKB inactivate GSK3A by phosphorylation at ser21. Lysophosphatidic acid primarily utilizes a PKC-dependent pathway to modulate GSK3 and certain growth factors (e.g., PDGFB), which control GSK3 mainly through PI3K-PKB, are able to regulate

**GSK3A Antibody (S21) - Protein Information****Name** GSK3A**Function**

Constitutively active protein kinase that acts as a negative regulator in the hormonal control of glucose homeostasis, Wnt signaling and regulation of transcription factors and microtubules, by phosphorylating and inactivating glycogen synthase (GYS1 or GYS2), CTNNB1/beta-catenin, APC and AXIN1 (PubMed: <a href="http://www.uniprot.org/citations/11749387" target="\_blank">11749387</a>, PubMed: <a href="http://www.uniprot.org/citations/17478001" target="\_blank">17478001</a>, PubMed: <a href="http://www.uniprot.org/citations/19366350" target="\_blank">19366350</a>). Requires primed phosphorylation of the majority of its substrates (PubMed: <a href="http://www.uniprot.org/citations/11749387" target="\_blank">11749387</a>, PubMed: <a href="http://www.uniprot.org/citations/17478001" target="\_blank">17478001</a>, PubMed: <a href="http://www.uniprot.org/citations/19366350" target="\_blank">19366350</a>). Contributes to insulin regulation of glycogen synthesis by phosphorylating and inhibiting GYS1 activity and hence glycogen synthesis (PubMed: <a href="http://www.uniprot.org/citations/11749387" target="\_blank">11749387</a>, PubMed: <a href="http://www.uniprot.org/citations/17478001" target="\_blank">17478001</a>, PubMed: <a href="http://www.uniprot.org/citations/19366350" target="\_blank">19366350</a>). Regulates glycogen metabolism in liver, but not in muscle (By similarity). May also mediate the development of insulin resistance by regulating activation of transcription factors (PubMed: <a href="http://www.uniprot.org/citations/10868943" target="\_blank">10868943</a>, PubMed: <a href="http://www.uniprot.org/citations/17478001" target="\_blank">17478001</a>). In Wnt signaling, regulates the level and transcriptional activity of nuclear

GSK3 through an alternative, redundant PKC pathway. In mice expressing familial AD-associated mutations in APP and PSEN1, lithium reduced the levels of beta-amyloid peptides GSK3A also phosphorylates the tau protein, the principal component of neurofibrillary tangles in AD, and suggested that inhibition of GSK3A may offer a new therapeutic approach to AD.

**GSK3A Antibody (S21) - References**

Strausberg, R.L., et al., Proc. Natl. Acad. Sci. U.S.A. 99(26):16899-16903 (2002).

CTNNB1/beta-catenin (PubMed:<a href="http://www.uniprot.org/citations/17229088" target="\_blank">17229088</a>). Facilitates amyloid precursor protein (APP) processing and the generation of APP-derived amyloid plaques found in Alzheimer disease (PubMed:<a href="http://www.uniprot.org/citations/12761548" target="\_blank">12761548</a>). May be involved in the regulation of replication in pancreatic beta-cells (By similarity). Is necessary for the establishment of neuronal polarity and axon outgrowth (By similarity). Through phosphorylation of the anti-apoptotic protein MCL1, may control cell apoptosis in response to growth factors deprivation (By similarity). Acts as a regulator of autophagy by mediating phosphorylation of KAT5/TIP60 under starvation conditions, leading to activate KAT5/TIP60 acetyltransferase activity and promote acetylation of key autophagy regulators, such as ULK1 and RUBCNL/Pacer (PubMed:<a href="http://www.uniprot.org/citations/30704899" target="\_blank">30704899</a>). Negatively regulates extrinsic apoptotic signaling pathway via death domain receptors. Promotes the formation of an anti- apoptotic complex, made of DDX3X, BRIC2 and GSK3B, at death receptors, including TNFRSF10B. The anti-apoptotic function is most effective with weak apoptotic signals and can be overcome by stronger stimulation (By similarity).

### **GSK3A Antibody (S21) - Protocols**

Provided below are standard protocols that you may find useful for product applications.

- [Western Blot](#)
- [Blocking Peptides](#)
- [Dot Blot](#)
- [Immunohistochemistry](#)
- [Immunofluorescence](#)
- [Immunoprecipitation](#)
- [Flow Cytometry](#)
- [Cell Culture](#)