

AK1 Antibody (C-term)

Purified Rabbit Polyclonal Antibody (Pab)

Catalog # AP8160b

Specification

AK1 Antibody (C-term) - Product Information

Application	WB, IHC-P,E
Primary Accession	P00568
Reactivity	Human, Hamster
Host	Rabbit
Clonality	Polyclonal
Isotype	Rabbit Ig
Calculated MW	21635
Antigen Region	165-194

AK1 Antibody (C-term) - Additional Information

Gene ID 203

Other Names

Adenylate kinase isoenzyme 1
{ECO:0000255|HAMAP-Rule:MF_03171}, AK
1 {ECO:0000255|HAMAP-Rule:MF_03171},
2743
{ECO:0000255|HAMAP-Rule:MF_03171},
2746
{ECO:0000255|HAMAP-Rule:MF_03171},
ATP-AMP transphosphorylase 1
{ECO:0000255|HAMAP-Rule:MF_03171},
ATP:AMP phosphotransferase
{ECO:0000255|HAMAP-Rule:MF_03171},
Adenylate monophosphate kinase
{ECO:0000255|HAMAP-Rule:MF_03171},
Myokinase
{ECO:0000255|HAMAP-Rule:MF_03171},
AK1
{ECO:0000255|HAMAP-Rule:MF_03171}

Target/Specificity

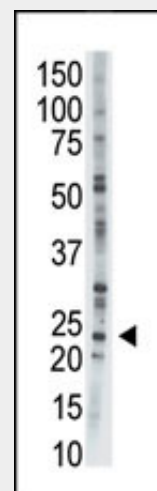
This AK1 antibody is generated from rabbits immunized with a KLH conjugated synthetic peptide between 165-194 amino acids from the C-terminal region of human AK1.

Dilution

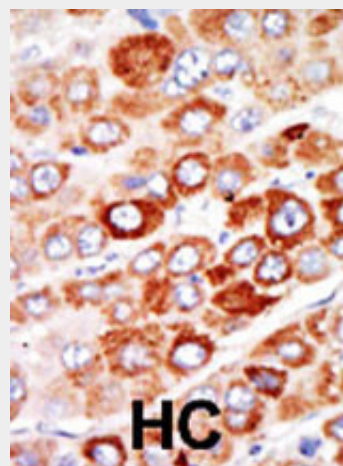
WB~~1:1000
IHC-P~~1:50~100

Format

Purified polyclonal antibody supplied in PBS with 0.09% (W/V) sodium azide. This



The anti-AK1 Pab (Cat. #AP8160b) is used in Western blot to detect AK1 in CHO cell lysate.



Formalin-fixed and paraffin-embedded human cancer tissue reacted with the primary antibody, which was peroxidase-conjugated to the secondary antibody, followed by AEC staining. This data demonstrates the use of this antibody for immunohistochemistry; clinical relevance has not been evaluated. BC = breast carcinoma; HC = hepatocarcinoma.

AK1 Antibody (C-term) - Background

antibody is prepared by Saturated Ammonium Sulfate (SAS) precipitation followed by dialysis against PBS.

Storage

Maintain refrigerated at 2-8°C for up to 2 weeks. For long term storage store at -20°C in small aliquots to prevent freeze-thaw cycles.

Precautions

AK1 Antibody (C-term) is for research use only and not for use in diagnostic or therapeutic procedures.

AK1 Antibody (C-term) - Protein Information**Name** AK1

{ECO:0000255|HAMAP-Rule:MF_03171}

Function

Catalyzes the reversible transfer of the terminal phosphate group between ATP and AMP. Also displays broad nucleoside diphosphate kinase activity. Plays an important role in cellular energy homeostasis and in adenine nucleotide metabolism.

Cellular Location

Cytoplasm.

Adenylate kinase is an enzyme involved in regulating the adenine nucleotide composition within a cell by catalyzing the reversible transfer of phosphate group among adinine nucleotides. Three isozymes of adenylate kinase have been identified in vertebrates, adenylate isozyme 1 (AK1), 2 (AK2) and 3 (AK3). AK1 is found in the cytosol of skeletal muscle, brain and erythrocytes, whereas AK2 and AK3 are found in the mitochondria of other tissues including liver and heart. AK1 was identified because of its association with a rare genetic disorder causing nonspherocytic hemolytic anemia where a mutation in the AK1 gene was found to reduce the catalytic activity of the enzyme.

AK1 Antibody (C-term) - References

Corrons, J.L., et al., Blood 102(1):353-356 (2003).
Toren, A., et al., Br. J. Haematol. 87(2):376-380 (1994).
Zuffardi, O., et al., Hum. Genet. 82(1):17-19 (1989).
Matsuura, S., et al., J. Biol. Chem. 264(17):10148-10155 (1989).
Miwa, S., et al., Am. J. Hematol. 14(4):325-333 (1983).

AK1 Antibody (C-term) - Protocols

Provided below are standard protocols that you may find useful for product applications.

- [Western Blot](#)
- [Blocking Peptides](#)
- [Dot Blot](#)
- [Immunohistochemistry](#)
- [Immunofluorescence](#)
- [Immunoprecipitation](#)
- [Flow Cytometry](#)
- [Cell Culture](#)