

SIL1 Antibody (Center)
Affinity Purified Rabbit Polyclonal Antibody (Pab)
Catalog # AP8511c

Specification

SIL1 Antibody (Center) - Product Information

Application	WB, IHC-P, FC,E
Primary Accession	Q9H173
Reactivity	Human, Mouse
Host	Rabbit
Clonality	Polyclonal
Isotype	Rabbit Ig
Calculated MW	52085
Antigen Region	99-126

SIL1 Antibody (Center) - Additional Information

Gene ID 64374

Other Names

Nucleotide exchange factor SIL1,
BiP-associated protein, BAP, SIL1

Target/Specificity

This SIL1 antibody is generated from rabbits immunized with a KLH conjugated synthetic peptide between 99-126 amino acids from the Central region of human SIL1.

Dilution

WB~~1:1000
IHC-P~~1:50~100
FC~~1:10~50

Format

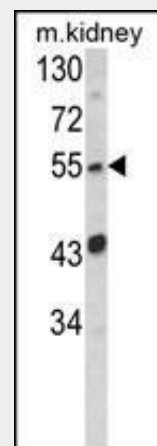
Purified polyclonal antibody supplied in PBS with 0.09% (W/V) sodium azide. This antibody is purified through a protein A column, followed by peptide affinity purification.

Storage

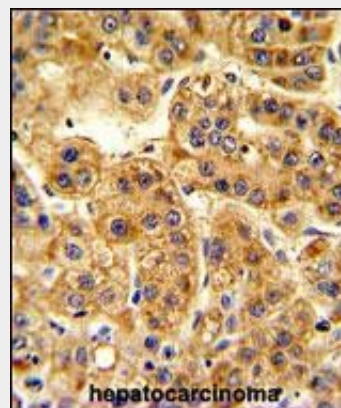
Maintain refrigerated at 2-8°C for up to 2 weeks. For long term storage store at -20°C in small aliquots to prevent freeze-thaw cycles.

Precautions

SIL1 Antibody (Center) is for research use only and not for use in diagnostic or therapeutic procedures.



Western blot analysis of SIL1 Antibody (Center) (Cat. #AP8511c) in mouse kidney tissue lysates (35ug/lane).SIL1 (arrow) was detected using the purified Pab.



Formalin-fixed and paraffin-embedded human hepatocarcinoma reacted with SIL1 Antibody (Center), which was peroxidase-conjugated to the secondary antibody, followed by DAB staining. This data demonstrates the use of this antibody for immunohistochemistry; clinical relevance has not been evaluated.

SIL1 Antibody (Center) - Protein Information

Name SIL1

Function

Required for protein translocation and folding in the endoplasmic reticulum (ER). Functions as a nucleotide exchange factor for the ER luminal chaperone HSPA5.

Cellular Location

Endoplasmic reticulum lumen

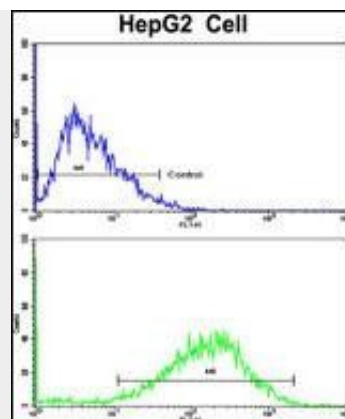
Tissue Location

Highly expressed in tissues which produce large amounts of secreted proteins such as kidney, liver and placenta. Also expressed in colon, heart, lung, ovary, pancreas, peripheral leukocyte, prostate, spleen and thymus. Expressed at low levels throughout the brain.

SIL1 Antibody (Center) - Protocols

Provided below are standard protocols that you may find useful for product applications.

- [Western Blot](#)
- [Blocking Peptides](#)
- [Dot Blot](#)
- [Immunohistochemistry](#)
- [Immunofluorescence](#)
- [Immunoprecipitation](#)
- [Flow Cytometry](#)
- [Cell Culture](#)



Flow cytometric analysis of HepG2 cells using SIL1 Antibody (Center)(bottom histogram) compared to a negative control cell (top histogram). FITC-conjugated goat-anti-rabbit secondary antibodies were used for the analysis.

SIL1 Antibody (Center) - Background

SIL1 IS a resident endoplasmic reticulum (ER), N-linked glycoprotein with an N-terminal ER targeting sequence, 2 putative N-glycosylation sites, and a C-terminal ER retention signal. This protein functions as a nucleotide exchange factor for another unfolded protein response protein.

SIL1 Antibody (Center) - References

Clark,H.F., ET.AL., Genome Res. 13 (10), 2265-2270 (2003)