

**ACTN1 Antibody (N-term)**  
**Affinity Purified Rabbit Polyclonal Antibody (Pab)**  
**Catalog # AP8512a**

**Specification**

**ACTN1 Antibody (N-term) - Product Information**

Application	<b>WB, IHC-P, FC,E</b>
Primary Accession	<a href="#">P12814</a>
Other Accession	<a href="#">Q9Z1P2</a> , <a href="#">Q7TPR4</a> , <a href="#">Q2PFV7</a> , <a href="#">Q3B7N2</a>
Reactivity	<b>Human</b>
Predicted	<b>Bovine, Monkey,</b> <b>Mouse, Rat</b>
Host	<b>Rabbit</b>
Clonality	<b>Polyclonal</b>
Isotype	<b>Rabbit Ig</b>
Calculated MW	<b>103058</b>
Antigen Region	<b>1-30</b>

**ACTN1 Antibody (N-term) - Additional Information**

**Gene ID 87**

**Other Names**

Alpha-actinin-1, Alpha-actinin cytoskeletal isoform, F-actin cross-linking protein, Non-muscle alpha-actinin-1, ACTN1

**Target/Specificity**

This ACTN1 antibody is generated from rabbits immunized with a KLH conjugated synthetic peptide between 1-30 amino acids from the N-terminal region of human ACTN1.

**Dilution**

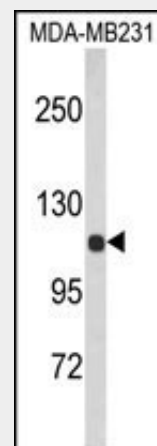
WB~~1:1000  
IHC-P~~1:50~100  
FC~~1:10~50

**Format**

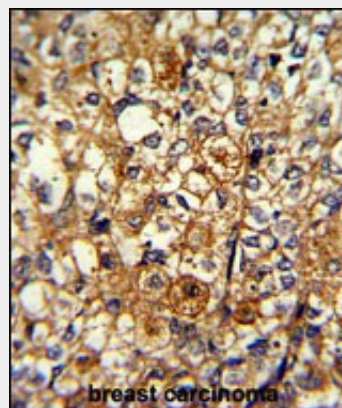
Purified polyclonal antibody supplied in PBS with 0.09% (W/V) sodium azide. This antibody is purified through a protein A column, followed by peptide affinity purification.

**Storage**

Maintain refrigerated at 2-8°C for up to 2 weeks. For long term storage store at -20°C



Western blot analysis of ACTN1 Antibody (N-term) (Cat. #AP8512a) in MDA-MB231 cell line lysates (35ug/lane). ACTN1 (arrow) was detected using the purified Pab.



Formalin-fixed and paraffin-embedded human breast carcinoma with ACTN1 Antibody (N-term), which was peroxidase-conjugated to the secondary antibody, followed by DAB staining. This data demonstrates the use of this antibody for immunohistochemistry; clinical relevance has not been evaluated.

in small aliquots to prevent freeze-thaw cycles.

### Precautions

ACTN1 Antibody (N-term) is for research use only and not for use in diagnostic or therapeutic procedures.

### ACTN1 Antibody (N-term) - Protein Information

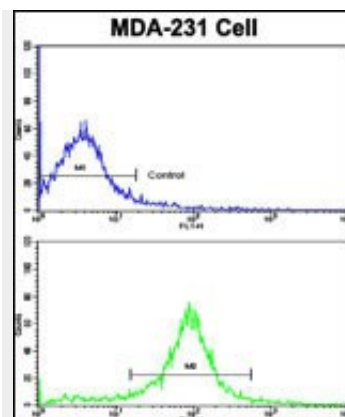
**Name** ACTN1

### Function

F-actin cross-linking protein which is thought to anchor actin to a variety of intracellular structures. This is a bundling protein.

### Cellular Location

Cytoplasm, cytoskeleton. Cytoplasm, myofibril, sarcomere, Z line. Cell membrane {ECO:0000250|UniProtKB:Q9Z1P2}. Cell junction {ECO:0000250|UniProtKB:Q9Z1P2}. Cell projection, ruffle {ECO:0000250|UniProtKB:Q7TPR4}. Note=Colocalizes with MYOZ2 and PPP3CA at the Z-line of heart and skeletal muscle. Colocalizes with PSD in membrane ruffles and central reticular structures {ECO:0000250|UniProtKB:Q7TPR4}



Flow cytometric analysis of MDA-231 cells using ACTN1 Antibody (N-term)(bottom histogram) compared to a negative control cell (top histogram). FITC-conjugated goat-anti-rabbit secondary antibodies were used for the analysis.

### ACTN1 Antibody (N-term) - Background

ACTN1 is a F-actin cross-linking protein which is thought to anchor actin to a variety of intracellular structures. This is a bundling protein.

### ACTN1 Antibody (N-term) - References

Zhang,Z., et.al., J. Biol. Chem. 281 (3), 1746-1754 (2006)

### ACTN1 Antibody (N-term) - Protocols

Provided below are standard protocols that you may find useful for product applications.

- [Western Blot](#)
- [Blocking Peptides](#)
- [Dot Blot](#)
- [Immunohistochemistry](#)
- [Immunofluorescence](#)
- [Immunoprecipitation](#)
- [Flow Cytometry](#)
- [Cell Culture](#)