

**IGFBP2 Antibody (C-term)**  
**Affinity Purified Rabbit Polyclonal Antibody (Pab)**  
**Catalog # AP8588B**

**Specification**

**IGFBP2 Antibody (C-term) - Product Information**

Application	IF, WB, IHC-P, FC,E
Primary Accession	<a href="#">P18065</a>
Other Accession	<a href="#">P24853</a> , <a href="#">P13384</a> , <a href="#">Q29400</a>
Reactivity Predicted	Human Bovine, Pig, Sheep
Host	Rabbit
Clonality	Polyclonal
Isotype	Rabbit Ig
Antigen Region	277-305

**IGFBP2 Antibody (C-term) - Additional Information**

**Gene ID** 3485

**Other Names**

Insulin-like growth factor-binding protein 2,  
IBP-2, IGF-binding protein 2, IGFBP-2,  
IGFBP2, BP2, IBP2

**Target/Specificity**

This IGFBP2 antibody is generated from rabbits immunized with a KLH conjugated synthetic peptide between 277-305 amino acids from the C-terminal region of human IGFBP2.

**Dilution**

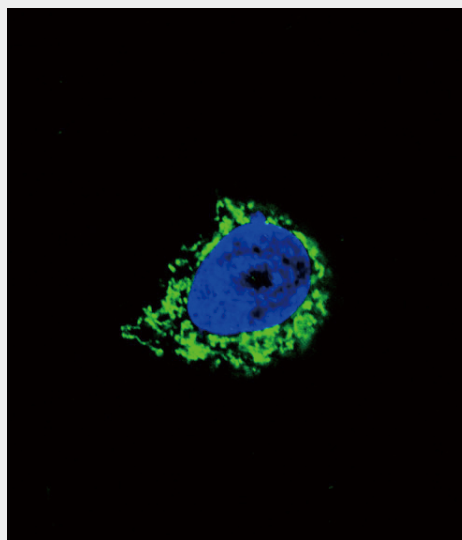
IF~~1:10~50  
WB~~1:1000  
IHC-P~~1:10~50  
FC~~1:10~50

**Format**

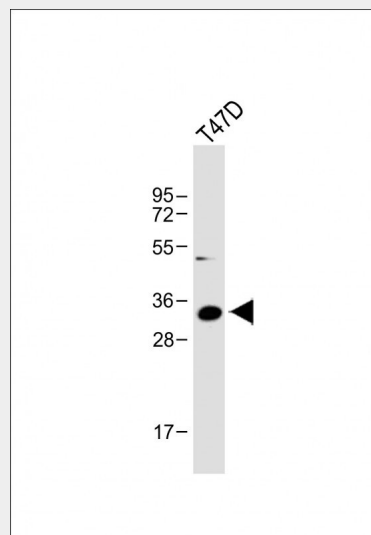
Purified polyclonal antibody supplied in PBS with 0.09% (W/V) sodium azide. This antibody is purified through a protein A column, followed by peptide affinity purification.

**Storage**

Maintain refrigerated at 2-8°C for up to 2



Confocal immunofluorescent analysis of IGFBP2 Antibody (C-term)(Cat. #AP8588b) with A549 cell followed by Alexa Fluor 488-conjugated goat anti-rabbit IgG (green). DAPI was used to stain the cell nuclear (blue).



Anti-IGFBP2 Antibody (C-term) at 1:1000 dilution + T47D whole cell lysate  
Lysates/proteins at 20 µg per lane.  
Secondary Goat Anti-Rabbit IgG, (H+L), Peroxidase conjugated at 1/10000 dilution.

weeks. For long term storage store at -20°C in small aliquots to prevent freeze-thaw cycles.

#### Precautions

IGFBP2 Antibody (C-term) is for research use only and not for use in diagnostic or therapeutic procedures.

#### IGFBP2 Antibody (C-term) - Protein Information

**Name** IGFBP2

**Synonyms** BP2, IBP2

#### Function

Inhibits IGF-mediated growth and developmental rates. IGF- binding proteins prolong the half-life of the IGFs and have been shown to either inhibit or stimulate the growth promoting effects of the IGFs on cell culture. They alter the interaction of IGFs with their cell surface receptors.

#### Cellular Location

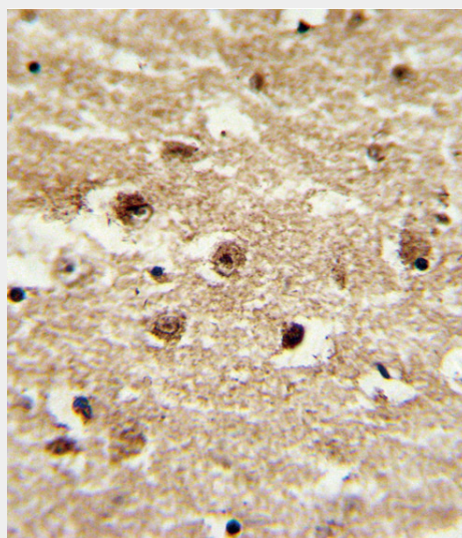
Secreted.

#### IGFBP2 Antibody (C-term) - Protocols

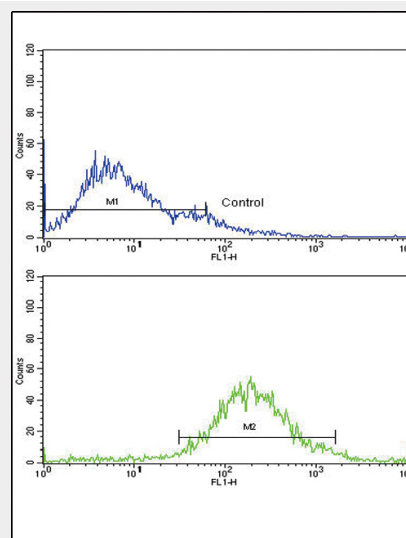
Provided below are standard protocols that you may find useful for product applications.

- [Western Blot](#)
- [Blocking Peptides](#)
- [Dot Blot](#)
- [Immunohistochemistry](#)
- [Immunofluorescence](#)
- [Immunoprecipitation](#)
- [Flow Cytometry](#)
- [Cell Culture](#)

Predicted band size : 35 kDa  
Blocking/Dilution buffer: 5% NFDM/TBST.



Formalin-fixed and paraffin-embedded human brain tissue with IGFBP2 Antibody (C-term), which was peroxidase-conjugated to the secondary antibody, followed by DAB staining. This data demonstrates the use of this antibody for immunohistochemistry; clinical relevance has not been evaluated.



Flow cytometric analysis of jurkat cells using IGFBP2 Antibody (C-term)(bottom histogram) compared to a negative control cell (top histogram). FITC-conjugated goat-anti-rabbit secondary antibodies were used for the analysis.

#### IGFBP2 Antibody (C-term) - Background

IGFBP2-binding proteins prolong the half-life of

the IGFs and have been shown to either inhibit or stimulate the growth promoting effects of the IGFs on cell culture. They alter the interaction of IGFs with their cell surface receptors.

#### **IGFBP2 Antibody (C-term) - References**

Arafat,A.M.,et.al.,J. Clin. Endocrinol. Metab. 94 (12), 5093-5101 (2009)  
Yazawa,T.,et.al.,Am. J. Pathol. 175 (3), 976-987 (2009)