

GAPDHS Antibody (Center)
Purified Rabbit Polyclonal Antibody (Pab)
Catalog # AP8610c

Specification

GAPDHS Antibody (Center) - Product Information

Application	WB, IHC-P, FC,E
Primary Accession	O14556
Other Accession	Q4R3T1
Reactivity	Human
Predicted	Monkey
Host	Rabbit
Clonality	Polyclonal
Isotype	Rabbit Ig
Antigen Region	104-134

GAPDHS Antibody (Center) - Additional Information

Gene ID 26330

Other Names

Glyceraldehyde-3-phosphate dehydrogenase, testis-specific, Spermatogenic cell-specific glyceraldehyde 3-phosphate dehydrogenase 2, GAPDH-2, Spermatogenic glyceraldehyde-3-phosphate dehydrogenase, GAPDHS, GAPD2, GAPDH2, GAPDS

Target/Specificity

This GAPDHS antibody is generated from rabbits immunized with a KLH conjugated synthetic peptide between 104-134 amino acids from the Central region of human GAPDHS.

Dilution

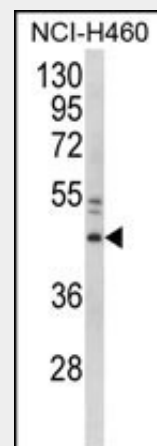
WB~~1:1000
IHC-P~~1:50~100
FC~~1:10~50

Format

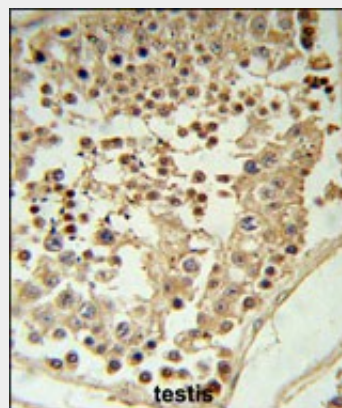
Purified polyclonal antibody supplied in PBS with 0.09% (W/V) sodium azide. This antibody is prepared by Saturated Ammonium Sulfate (SAS) precipitation followed by dialysis against PBS.

Storage

Maintain refrigerated at 2-8°C for up to 2



Western blot analysis of GAPDHS Antibody (Center) (Cat. #AP8610c) in NCI-H460 cell line lysates (35ug/lane). GAPDHS (arrow) was detected using the purified Pab.



GAPDHS Antibody (Center) (Cat. #AP8610c) IHC analysis in formalin fixed and paraffin embedded testis tissue followed by peroxidase conjugation of the secondary antibody and DAB staining. This data demonstrates the use of the GAPDHS Antibody (Center) for immunohistochemistry. Clinical relevance has not been evaluated.

weeks. For long term storage store at -20°C in small aliquots to prevent freeze-thaw cycles.

Precautions

GAPDHS Antibody (Center) is for research use only and not for use in diagnostic or therapeutic procedures.

GAPDHS Antibody (Center) - Protein Information

Name GAPDHS

Synonyms GAPD2, GAPDH2, GAPDS

Function

May play an important role in regulating the switch between different pathways for energy production during spermiogenesis and in the spermatozoon. Required for sperm motility and male fertility (By similarity).

Cellular Location

Cytoplasm.

Tissue Location

Testis specific.

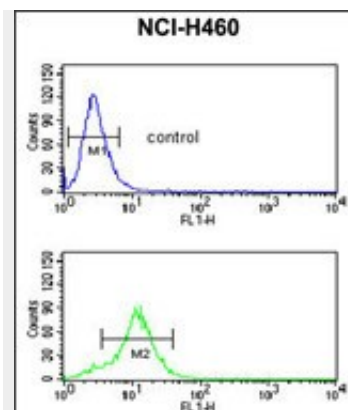
GAPDHS Antibody (Center) - Protocols

Provided below are standard protocols that you may find useful for product applications.

- [Western Blot](#)
- [Blocking Peptides](#)
- [Dot Blot](#)
- [Immunohistochemistry](#)
- [Immunofluorescence](#)
- [Immunoprecipitation](#)
- [Flow Cytometry](#)
- [Cell Culture](#)

GAPDHS Antibody (Center) - Citations

- [The effects of chemotherapy with bleomycin, etoposide, and cis-platinum \(BEP\) on rat sperm chromatin remodeling, fecundity and testicular gene expression in the progeny.](#)
- [Exposure to bleomycin, etoposide, and cis-platinum alters rat sperm chromatin integrity and sperm head protein profile.](#)



GAPDHS Antibody (Center) (Cat. #AP8610c) flow cytometric analysis of NCI-H460 cells (bottom histogram) compared to a negative control cell (top histogram). FITC-conjugated goat-anti-rabbit secondary antibodies were used for the analysis.

GAPDHS Antibody (Center) - Background

GAPDHS is a protein belonging to the glyceraldehyde-3-phosphate dehydrogenase family of enzymes that play an important role in carbohydrate metabolism. Like its somatic cell counterpart, this sperm-specific enzyme functions in a nicotinamide adenine dinucleotide-dependent manner to remove hydrogen and add phosphate to glyceraldehyde 3-phosphate to form 1,3-diphosphoglycerate. During spermiogenesis, this enzyme may play an important role in regulating the switch between different energy-producing pathways, and it is required for sperm motility and male fertility.

GAPDHS Antibody (Center) - References

Welch, J.E., et.al., J. Androl. 21 (2), 328-338 (2000) Goodwin, L.O., et.al., Mol. Hum. Reprod. 6 (2), 127-136 (2000) Benham, F.J. et.al., Genomics 5 (2), 209-214 (1989)