

OLIG3 Antibody (Center)
Affinity Purified Rabbit Polyclonal Antibody (Pab)
Catalog # AP8632c

Specification

OLIG3 Antibody (Center) - Product Information

| | |
|-------------------|------------------------|
| Application | WB, IHC-P, FC,E |
| Primary Accession | Q7RTU3 |
| Other Accession | Q6PFG8 |
| Reactivity | Human, Mouse |
| Host | Rabbit |
| Clonality | Polyclonal |
| Isotype | Rabbit Ig |
| Calculated MW | 29358 |
| Antigen Region | 74-100 |

OLIG3 Antibody (Center) - Additional Information

Gene ID 167826

Other Names

Oligodendrocyte transcription factor 3, Oligo3, Class B basic helix-loop-helix protein 7, bHLHb7, Class E basic helix-loop-helix protein 20, bHLHe20, OLIG3, BHLHB7, BHLHE20

Target/Specificity

This OLIG3 antibody is generated from rabbits immunized with a KLH conjugated synthetic peptide between 74-100 amino acids from the Central region of human OLIG3.

Dilution

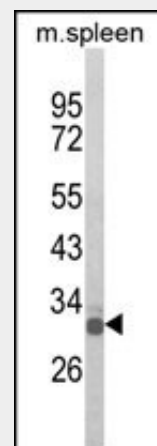
WB~~1:1000
IHC-P~~1:50~100
FC~~1:10~50

Format

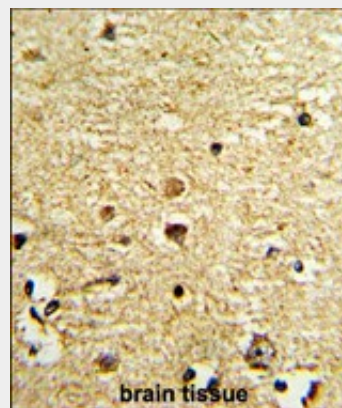
Purified polyclonal antibody supplied in PBS with 0.09% (W/V) sodium azide. This antibody is purified through a protein A column, followed by peptide affinity purification.

Storage

Maintain refrigerated at 2-8°C for up to 2 weeks. For long term storage store at -20°C in small aliquots to prevent freeze-thaw cycles.



Western blot analysis of OLIG3 Antibody (Center) (Cat. #AP8632c) in mouse spleen tissue lysates (35ug/lane). OLIG3 (arrow) was detected using the purified Pab.



Formalin-fixed and paraffin-embedded human brain tissue with OLIG3 Antibody (Center), which was peroxidase-conjugated to the secondary antibody, followed by DAB staining. This data demonstrates the use of this antibody for immunohistochemistry; clinical relevance has not been evaluated.

Precautions

OLIG3 Antibody (Center) is for research use only and not for use in diagnostic or therapeutic procedures.

OLIG3 Antibody (Center) - Protein Information

Name OLIG3

Synonyms BHLHB7, BHLHE20

Function

May determine the distinct specification program of class A neurons in the dorsal part of the spinal cord and suppress specification of class B neurons.

Cellular Location

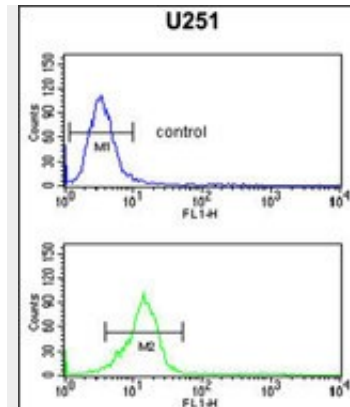
Nucleus

{ECO:0000255|PROSITE-ProRule:PRU00981}.

OLIG3 Antibody (Center) - Protocols

Provided below are standard protocols that you may find useful for product applications.

- [Western Blot](#)
- [Blocking Peptides](#)
- [Dot Blot](#)
- [Immunohistochemistry](#)
- [Immunofluorescence](#)
- [Immunoprecipitation](#)
- [Flow Cytometry](#)
- [Cell Culture](#)



OLIG3 Antibody (Center) (Cat. #AP8632c) flow cytometric analysis of U251 cells (bottom histogram) compared to a negative control cell (top histogram). FITC-conjugated goat-anti-rabbit secondary antibodies were used for the analysis.

OLIG3 Antibody (Center) - Background

OLIG3 may determine the distinct specification program of class A neurons in the dorsal part of the spinal cord and suppress specification of class B neurons.

OLIG3 Antibody (Center) - References

Muller, T., et al., Genes Dev. 19 (6), 733-743 (2005)