

**ICAM1 Antibody (C-term)**  
**Purified Rabbit Polyclonal Antibody (Pab)**  
**Catalog # AP8656b**

**Specification**

**ICAM1 Antibody (C-term) - Product Information**

Application	<b>WB, FC,E</b>
Primary Accession	<a href="#">P05362</a>
Reactivity	<b>Human</b>
Host	<b>Rabbit</b>
Clonality	<b>Polyclonal</b>
Isotype	<b>Rabbit Ig</b>
Antigen Region	<b>488-514</b>

**ICAM1 Antibody (C-term) - Additional Information**

**Gene ID** 3383

**Other Names**

Intercellular adhesion molecule 1, ICAM-1,  
Major group rhinovirus receptor, CD54,  
ICAM1

**Target/Specificity**

This ICAM1 antibody is generated from rabbits immunized with a KLH conjugated synthetic peptide between 488-514 amino acids from the C-terminal region of human ICAM1.

**Dilution**

WB~~1:1000  
FC~~1:10~50

**Format**

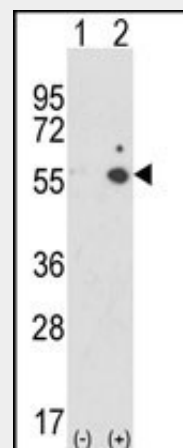
Purified polyclonal antibody supplied in PBS with 0.09% (W/V) sodium azide. This antibody is prepared by Saturated Ammonium Sulfate (SAS) precipitation followed by dialysis against PBS.

**Storage**

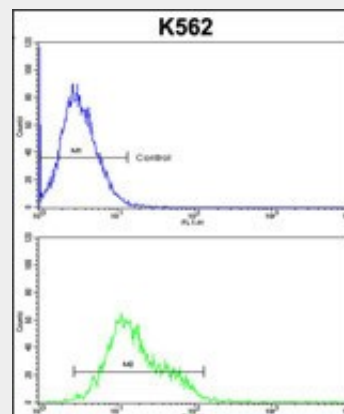
Maintain refrigerated at 2-8°C for up to 2 weeks. For long term storage store at -20°C in small aliquots to prevent freeze-thaw cycles.

**Precautions**

ICAM1 Antibody (C-term) is for research use only and not for use in diagnostic or therapeutic procedures.



Western blot analysis of ICAM1 (arrow) using rabbit polyclonal ICAM1 Antibody (C-term) (Cat. #AP8656b). 293 cell lysates (2 ug/lane) either nontransfected (Lane 1) or transiently transfected with the ICAM1 gene (Lane 2).



ICAM1 Antibody (C-term) (Cat. #AP8656b) flow cytometric analysis of k562 cells (bottom histogram) compared to a negative control cell (top histogram). FITC-conjugated goat-anti-rabbit secondary antibodies were used for the analysis.

**ICAM1 Antibody (C-term) - Background**

ICAM1 is a cell surface glycoprotein which is typically expressed on endothelial cells and cells of the immune system. It binds to

**ICAM1 Antibody (C-term) - Protein Information****Name** ICAM1**Function**

ICAM proteins are ligands for the leukocyte adhesion protein LFA-1 (integrin alpha-L/beta-2). During leukocyte trans-endothelial migration, ICAM1 engagement promotes the assembly of endothelial apical cups through ARHGEF26/SGEF and RHOG activation.

**Cellular Location**

Membrane; Single-pass type I membrane protein.

integrins of type CD11a / CD18, or CD11b / CD18 and is also exploited by Rhinovirus as a receptor.

**ICAM1 Antibody (C-term) - References**

Denkers, I.A., et.al., Leuk. Res. 16 (5), 469-474 (1992)  
Rossler, K., et.al., J. Neurosci. Res. 31 (2), 365-374 (1992)

**ICAM1 Antibody (C-term) - Protocols**

Provided below are standard protocols that you may find useful for product applications.

- [Western Blot](#)
- [Blocking Peptides](#)
- [Dot Blot](#)
- [Immunohistochemistry](#)
- [Immunofluorescence](#)
- [Immunoprecipitation](#)
- [Flow Cytometry](#)
- [Cell Culture](#)

**ICAM1 Antibody (C-term) - Citations**

- [Long noncoding RNA atlas of the inflammation caused by asthma in mice](#)
- [Myocardin-related transcription factor A mediates OxLDL-induced endothelial injury.](#)