

SORCS1 Antibody (N-term)
Affinity Purified Rabbit Polyclonal Antibody (Pab)
Catalog # AP8734a

Specification

SORCS1 Antibody (N-term) - Product Information

Application	WB, FC,E
Primary Accession	Q8WY21
Reactivity	Human
Host	Rabbit
Clonality	Polyclonal
Isotype	Rabbit Ig
Antigen Region	126-154

SORCS1 Antibody (N-term) - Additional Information

Gene ID 114815

Other Names

VPS10 domain-containing receptor SorCS1, hSorCS, SORCS1, SORCS

Target/Specificity

This SORCS1 antibody is generated from rabbits immunized with a KLH conjugated synthetic peptide between 126-154 amino acids from the N-terminal region of human SORCS1.

Dilution

WB~~1:1000
FC~~1:10~50

Format

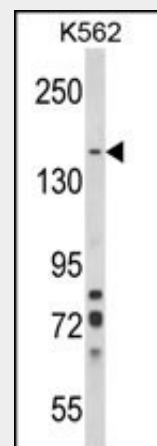
Purified polyclonal antibody supplied in PBS with 0.09% (W/V) sodium azide. This antibody is purified through a protein A column, followed by peptide affinity purification.

Storage

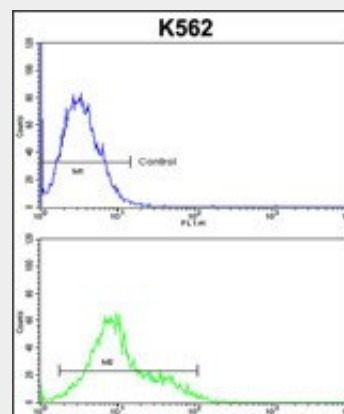
Maintain refrigerated at 2-8°C for up to 2 weeks. For long term storage store at -20°C in small aliquots to prevent freeze-thaw cycles.

Precautions

SORCS1 Antibody (N-term) is for research use only and not for use in diagnostic or therapeutic procedures.



Western blot analysis of SORCS1 Antibody (N-term) (Cat. #AP8734a) in K562 cell line lysates (35ug/lane). SORCS1 (arrow) was detected using the purified Pab.



SORCS1 Antibody (N-term)(Cat. #AP8734a) flow cytometric analysis of k562 cells (bottom histogram) compared to a negative control cell (top histogram).FITC-conjugated goat-anti-rabbit secondary antibodies were used for the analysis.

SORCS1 Antibody (N-term) - Background

SORCS1 is one family member of vacuolar protein sorting 10 (VPS10) domain-containing receptor proteins. The VPS10 domain name comes from the yeast carboxypeptidase Y

SORCS1 Antibody (N-term) - Protein Information**Name** SORCS1**Synonyms** SORCS**Cellular Location**

Membrane; Single-pass type I membrane protein.

Tissue Location

Detected in fetal and infant brain and in fetal retina

sorting receptor Vps10 protein.

SORCS1 Antibody (N-term) - References

Hermey,G., et.al., J. Biol. Chem. 278 (9), 7390-7396 (2003)

SORCS1 Antibody (N-term) - Protocols

Provided below are standard protocols that you may find useful for product applications.

- [Western Blot](#)
- [Blocking Peptides](#)
- [Dot Blot](#)
- [Immunohistochemistry](#)
- [Immunofluorescence](#)
- [Immunoprecipitation](#)
- [Flow Cytometry](#)
- [Cell Culture](#)