

**IGH Antibody (C-Term)**  
**Affinity Purified Rabbit Polyclonal Antibody (Pab)**  
**Catalog # AP8783b**

**Specification**

**IGH Antibody (C-Term) - Product Information**

Application	WB, IHC-P, FC,E
Primary Accession	<a href="#">P01876</a>
Other Accession	<a href="#">P01877</a>
Reactivity	Human
Host	Rabbit
Clonality	Polyclonal
Isotype	Rabbit Ig
Calculated MW	37655
Antigen Region	290-320

**IGH Antibody (C-Term) - Additional Information**

**Other Names**

Ig alpha-1 chain C region, IGHA1

**Target/Specificity**

This IGH antibody is generated from rabbits immunized with a KLH conjugated synthetic peptide between 290-320 amino acids from the C-terminal region of human IGH.

**Dilution**

WB~~1:1000  
IHC-P~~1:50~100  
FC~~1:10~50

**Format**

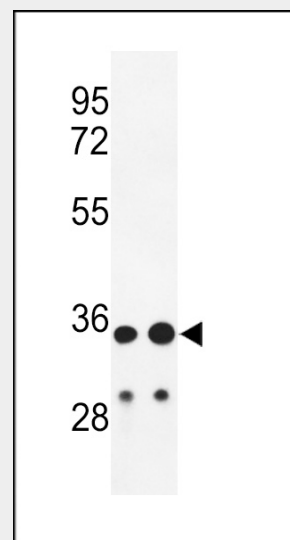
Purified polyclonal antibody supplied in PBS with 0.09% (W/V) sodium azide. This antibody is purified through a protein A column, followed by peptide affinity purification.

**Storage**

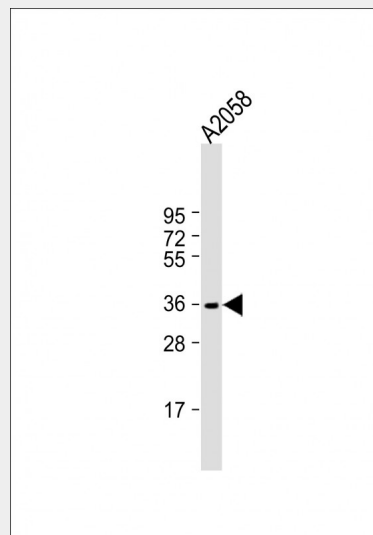
Maintain refrigerated at 2-8°C for up to 2 weeks. For long term storage store at -20°C in small aliquots to prevent freeze-thaw cycles.

**Precautions**

IGH Antibody (C-Term) is for research use only and not for use in diagnostic or therapeutic procedures.



Western blot analysis of IGH Antibody (C-Term) (Cat. #AP8783b) in HL-60, A2058 cell line lysates (35ug/lane). IGH (arrow) was detected using the purified Pab.



Anti-IGH Antibody (C-Term) at 1:1000 dilution + A2058 whole cell lysate  
Lysates/proteins at 20 µg per lane.  
Secondary Goat Anti-Rabbit IgG, (H+L), Peroxidase conjugated at 1/10000 dilution.  
Predicted band size : 38 kDa  
Blocking/Dilution buffer: 5% NFDM/TBST.

## IGH Antibody (C-Term) - Protein Information

### Name IGHA1

{ECO:0000303|PubMed:11340299,  
ECO:0000303|Ref.12}

### Function

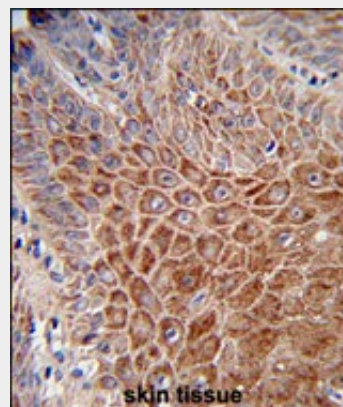
Constant region of immunoglobulin heavy chains. Immunoglobulins, also known as antibodies, are membrane-bound or secreted glycoproteins produced by B lymphocytes. In the recognition phase of humoral immunity, the membrane-bound immunoglobulins serve as receptors which, upon binding of a specific antigen, trigger the clonal expansion and differentiation of B lymphocytes into immunoglobulin-secreting plasma cells. Secreted immunoglobulins mediate the effector phase of humoral immunity, which results in the elimination of bound antigens (PubMed:<a href="http://www.uniprot.org/citations/22158414" target="\_blank">22158414</a>, PubMed:<a href="http://www.uniprot.org/citations/20176268" target="\_blank">20176268</a>). The antigen binding site is formed by the variable domain of one heavy chain, together with that of its associated light chain. Thus, each immunoglobulin has two antigen binding sites with remarkable affinity for a particular antigen. The variable domains are assembled by a process called V-(D)-J rearrangement and can then be subjected to somatic hypermutations which, after exposure to antigen and selection, allow affinity maturation for a particular antigen (PubMed:<a href="http://www.uniprot.org/citations/17576170" target="\_blank">17576170</a>, PubMed:<a href="http://www.uniprot.org/citations/20176268" target="\_blank">20176268</a>). Ig alpha is the major immunoglobulin class in body secretions (PubMed:<a href="http://www.uniprot.org/citations/2241915" target="\_blank">2241915</a>).

### Cellular Location

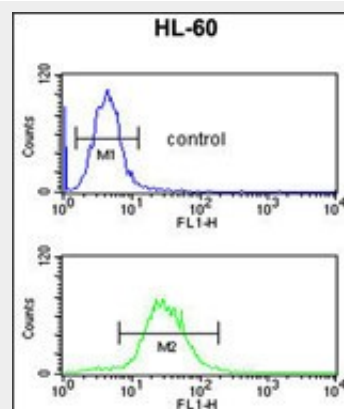
Secreted. Cell membrane

## IGH Antibody (C-Term) - Protocols

Provided below are standard protocols that you



Formalin-fixed and paraffin-embedded human skin reacted with IGH Antibody (C-Term), which was peroxidase-conjugated to the secondary antibody, followed by DAB staining. This data demonstrates the use of this antibody for immunohistochemistry; clinical relevance has not been evaluated.



IGH Antibody (C-Term) (Cat. #AP8783b) flow cytometric analysis of HL-60 cells (bottom histogram) compared to a negative control cell (top histogram). FITC-conjugated goat-anti-rabbit secondary antibodies were used for the analysis.

## IGH Antibody (C-Term) - References

Strausberg, R.L., et.al., Proc. Natl. Acad. Sci. U.S.A. 99 (26), 16899-16903 (2002)

may find useful for product applications.

- [Western Blot](#)
- [Blocking Peptides](#)
- [Dot Blot](#)
- [Immunohistochemistry](#)
- [Immunofluorescence](#)
- [Immunoprecipitation](#)
- [Flow Cytometry](#)
- [Cell Culture](#)