

IL12A Antibody (C-term)
Affinity Purified Rabbit Polyclonal Antibody (Pab)
Catalog # AP8796b

Specification

IL12A Antibody (C-term) - Product Information

Application	WB, IHC-P, FC,E
Primary Accession	P29459
Reactivity	Human
Host	Rabbit
Clonality	Polyclonal
Isotype	Rabbit Ig
Calculated MW	24874
Antigen Region	168-195

IL12A Antibody (C-term) - Additional Information

Gene ID 3592

Other Names

Interleukin-12 subunit alpha, IL-12A,
Cytotoxic lymphocyte maturation factor 35
kDa subunit, CLMF p35, IL-12 subunit p35,
NK cell stimulatory factor chain 1, NKSF1,
IL12A, NKSF1

Target/Specificity

This IL12A antibody is generated from rabbits immunized with a KLH conjugated synthetic peptide between 168-195 amino acids from the C-terminal region of human IL12A.

Dilution

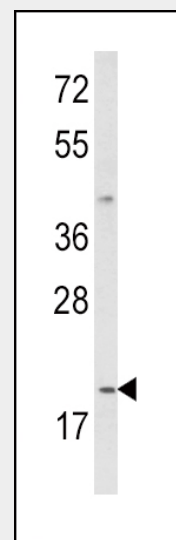
WB~~1:1000
IHC-P~~1:10~50
FC~~1:10~50

Format

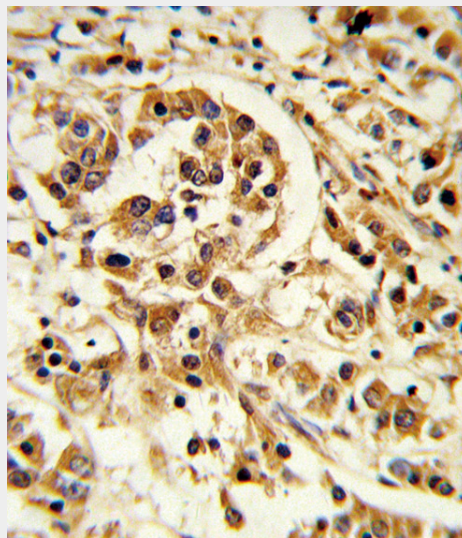
Purified polyclonal antibody supplied in PBS with 0.09% (W/V) sodium azide. This antibody is purified through a protein A column, followed by peptide affinity purification.

Storage

Maintain refrigerated at 2-8°C for up to 2 weeks. For long term storage store at -20°C in small aliquots to prevent freeze-thaw cycles.



Western blot analysis of IL12A Antibody (C-term) (Cat. #AP8796b) in MDA-MB231 cell line lysates (35ug/lane). IL12A (arrow) was detected using the purified Pab.



Formalin-fixed and paraffin-embedded human breast carcinoma reacted with IL12A Antibody (C-term), which was peroxidase-conjugated to the secondary antibody, followed by DAB staining. This data demonstrates the use of this antibody for immunohistochemistry; clinical relevance has

Precautions

IL12A Antibody (C-term) is for research use only and not for use in diagnostic or therapeutic procedures.

IL12A Antibody (C-term) - Protein Information

Name IL12A

Synonyms NKSF1

Function

Cytokine that can act as a growth factor for activated T and NK cells, enhance the lytic activity of NK/lymphokine-activated killer cells, and stimulate the production of IFN-gamma by resting PBMC.

Cellular Location

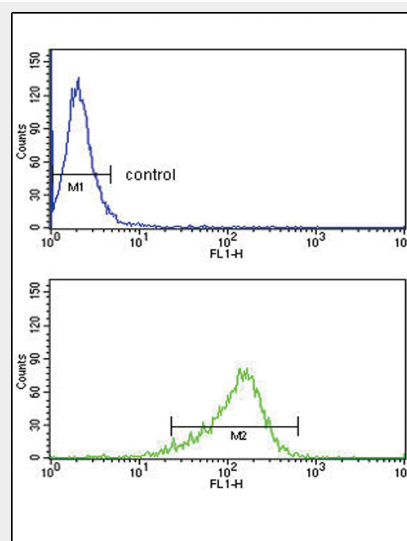
Secreted

IL12A Antibody (C-term) - Protocols

Provided below are standard protocols that you may find useful for product applications.

- [Western Blot](#)
- [Blocking Peptides](#)
- [Dot Blot](#)
- [Immunohistochemistry](#)
- [Immunofluorescence](#)
- [Immunoprecipitation](#)
- [Flow Cytometry](#)
- [Cell Culture](#)

not been evaluated.



IL12A Antibody (C-term) (Cat.#AP8796b) flow cytometry analysis of MDA-MB231 cells (bottom histogram) compared to a negative control cell (top histogram). FITC-conjugated goat-anti-rabbit secondary antibodies were used for the analysis.

IL12A Antibody (C-term) - Background

IL12A is a subunit of a cytokine that acts on T and natural killer cells, and has a broad array of biological activities. The cytokine is a disulfide-linked heterodimer composed of the 35-kD subunit encoded by this gene, and a 40-kD subunit that is a member of the cytokine receptor family. This cytokine is required for the T-cell-independent induction of interferon (IFN)-gamma, and is important for the differentiation of both Th1 and Th2 cells. The responses of lymphocytes to this cytokine are mediated by the activator of transcription protein STAT4. Nitric oxide synthase 2A (NOS2A/NOS2) is found to be required for the signaling process of this cytokine in innate immunity.

IL12A Antibody (C-term) - References

D'Andrea,A., et.al., J. Exp. Med. 176 (5), 1387-1398 (1992)