

SLC3A1 Antibody (Center)
Affinity Purified Rabbit Polyclonal Antibody (Pab)
Catalog # AP8802c

Specification

SLC3A1 Antibody (Center) - Product Information

Application	WB, FC,E
Primary Accession	Q07837
Reactivity	Human
Host	Rabbit
Clonality	Polyclonal
Isotype	Rabbit Ig
Calculated MW	78852
Antigen Region	156-184

SLC3A1 Antibody (Center) - Additional Information

Gene ID 6519

Other Names

Neutral and basic amino acid transport protein rBAT, NBAT, D2h, Solute carrier family 3 member 1, b(0, +)-type amino acid transport protein, SLC3A1, RBAT

Target/Specificity

This SLC3A1 antibody is generated from rabbits immunized with a KLH conjugated synthetic peptide between 156-184 amino acids from the Central region of human SLC3A1.

Dilution

WB~~1:1000
FC~~1:10~50

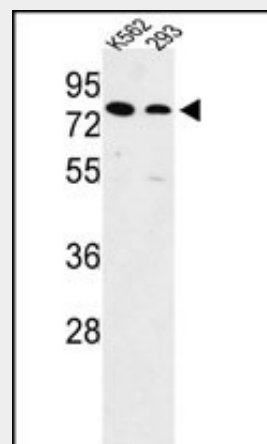
Format

Purified polyclonal antibody supplied in PBS with 0.09% (W/V) sodium azide. This antibody is purified through a protein A column, followed by peptide affinity purification.

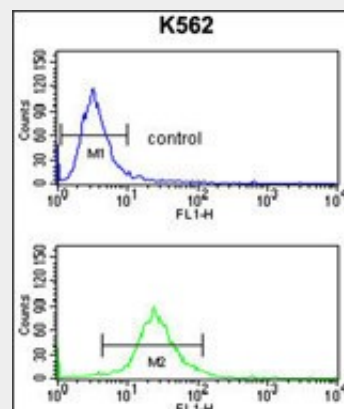
Storage

Maintain refrigerated at 2-8°C for up to 2 weeks. For long term storage store at -20°C in small aliquots to prevent freeze-thaw cycles.

Precautions



Western blot analysis of SLC3A1 Antibody (Center) (Cat. #AP8802c) in K562, 293 cell line lysates (35ug/lane). SLC3A1 (arrow) was detected using the purified Pab.



SLC3A1 Antibody (Center) (Cat. #AP8802c) flow cytometry analysis of K562 cells (bottom histogram) compared to a negative control cell (top histogram). FITC-conjugated goat-anti-rabbit secondary antibodies were used for the analysis.

SLC3A1 Antibody (Center) - Background

SLC3A1 is a type II membrane glycoprotein which is one of the components of the renal amino acid transporter which transports neutral and basic amino acids in the renal

SLC3A1 Antibody (Center) is for research use only and not for use in diagnostic or therapeutic procedures.

tubule and intestinal tract.

SLC3A1 Antibody (Center) - Protein Information

Name SLC3A1

Synonyms RBAT

Function

Involved in the high-affinity, sodium-independent transport of cystine and neutral and dibasic amino acids (system B(0,+)-like activity). May function as an activator of SLC7A9 and be involved in the high-affinity reabsorption of cystine in the kidney tubule.

Cellular Location

Membrane; Single- pass type II membrane protein

Tissue Location

Expressed in the brush border membrane in the kidney (at protein level). Predominantly expressed in the kidney, small intestine and pancreas. Weakly expressed in liver

SLC3A1 Antibody (Center) - Protocols

Provided below are standard protocols that you may find useful for product applications.

- [Western Blot](#)
- [Blocking Peptides](#)
- [Dot Blot](#)
- [Immunohistochemistry](#)
- [Immunofluorescence](#)
- [Immunoprecipitation](#)
- [Flow Cytometry](#)
- [Cell Culture](#)

SLC3A1 Antibody (Center) - References

Chabrol,B., et.al., J. Med. Genet. 45 (5), 314-318 (2008)