

**CCR3 Antibody (Center)**  
**Affinity Purified Rabbit Polyclonal Antibody (Pab)**  
**Catalog # AP8806c**

**Specification**

**CCR3 Antibody (Center) - Product Information**

Application	<b>WB, FC,E</b>
Primary Accession	<a href="#">P51677</a>
Other Accession	<a href="#">Q9BDS8</a>
Reactivity	<b>Human</b>
Predicted	<b>Monkey</b>
Host	<b>Rabbit</b>
Clonality	<b>Polyclonal</b>
Isotype	<b>Rabbit Ig</b>
Calculated MW	<b>41044</b>
Antigen Region	<b>291-318</b>

**CCR3 Antibody (Center) - Additional Information**

**Gene ID** 1232

**Other Names**

C-C chemokine receptor type 3, C-C CKR-3, CC-CKR-3, CCR-3, CCR3, CKR3, Eosinophil eotaxin receptor, CD193, CCR3, CMKBR3

**Target/Specificity**

This CCR3 antibody is generated from rabbits immunized with a KLH conjugated synthetic peptide between 291-318 amino acids from the Central region of human CCR3.

**Dilution**

WB~~1:1000  
FC~~1:10~50

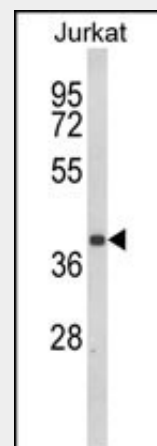
**Format**

Purified polyclonal antibody supplied in PBS with 0.09% (W/V) sodium azide. This antibody is purified through a protein A column, followed by peptide affinity purification.

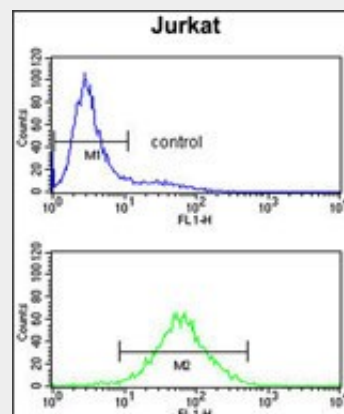
**Storage**

Maintain refrigerated at 2-8°C for up to 2 weeks. For long term storage store at -20°C in small aliquots to prevent freeze-thaw cycles.

**Precautions**



Western blot analysis of CCR3 Antibody (Center) (Cat. #AP8806c) in Jurkat cell line lysates (35ug/lane). CCR3 (arrow) was detected using the purified Pab.



CCR3 Antibody (Center) (Cat. #AP8806c) flow cytometry analysis of Jurkat cells (bottom histogram) compared to a negative control cell (top histogram). FITC-conjugated goat-anti-rabbit secondary antibodies were used for the analysis.

**CCR3 Antibody (Center) - Background**

CCR3 is a receptor for C-C type chemokines. It belongs to family 1 of the G protein-coupled receptors. This receptor binds and responds to a variety of chemokines, including eotaxin

CCR3 Antibody (Center) is for research use only and not for use in diagnostic or therapeutic procedures.

#### **CCR3 Antibody (Center) - Protein Information**

**Name** CCR3

**Synonyms** CMKBR3

#### **Function**

Receptor for C-C type chemokine. Binds and responds to a variety of chemokines, including CCL11, CCL26, CCL7, CCL13, RANTES(CCL5) and CCL15 (PubMed:<a href="http://www.uniprot.org/citations/7622448" target="\_blank">7622448</a>, PubMed:<a href="http://www.uniprot.org/citations/8642344" target="\_blank">8642344</a>, PubMed:<a href="http://www.uniprot.org/citations/8676064" target="\_blank">8676064</a>). Subsequently transduces a signal by increasing the intracellular calcium ions level (PubMed:<a href="http://www.uniprot.org/citations/8676064" target="\_blank">8676064</a>). In addition acts as a possible functional receptor for NARS1 (PubMed:<a href="http://www.uniprot.org/citations/30171954" target="\_blank">30171954</a>).

#### **Cellular Location**

Cell membrane; Multi-pass membrane protein

#### **Tissue Location**

In eosinophils as well as trace amounts in neutrophils and monocytes.

(CCL11), eotaxin-3 (CCL26), MCP-3 (CCL7), MCP-4 (CCL13), and RANTES (CCL5). It is highly expressed in eosinophils and basophils, and is also detected in TH1 and TH2 cells, as well as in airway epithelial cells. This receptor may contribute to the accumulation and activation of eosinophils and other inflammatory cells in the allergic airway. It is also known to be an entry co-receptor for HIV-1.

#### **CCR3 Antibody (Center) - References**

Ponath,P.D., et.al., J. Clin. Invest. 97 (3), 604-612 (1996)

#### **CCR3 Antibody (Center) - Protocols**

Provided below are standard protocols that you may find useful for product applications.

- [Western Blot](#)
- [Blocking Peptides](#)
- [Dot Blot](#)
- [Immunohistochemistry](#)
- [Immunofluorescence](#)
- [Immunoprecipitation](#)
- [Flow Cytometry](#)

- [Cell Culture](#)