

**CANT1 Antibody (N-term)**  
**Affinity Purified Rabbit Polyclonal Antibody (Pab)**  
**Catalog # AP8822a**

**Specification**

**CANT1 Antibody (N-term) - Product Information**

Application	<b>WB, FC,E</b>
Primary Accession	<a href="#">Q8WVQ1</a>
Reactivity	<b>Human</b>
Host	<b>Rabbit</b>
Clonality	<b>Polyclonal</b>
Isotype	<b>Rabbit Ig</b>
Calculated MW	<b>44840</b>
Antigen Region	<b>1-30</b>

**CANT1 Antibody (N-term) - Additional Information**

**Gene ID** 124583

**Other Names**

Soluble calcium-activated nucleotidase 1, SCAN-1, Apyrase homolog, Putative MAPK-activating protein PM09, Putative NF-kappa-B-activating protein 107, CANT1, SHAPY

**Target/Specificity**

This CANT1 antibody is generated from rabbits immunized with a KLH conjugated synthetic peptide between 1-30 amino acids from the N-terminal region of human CANT1.

**Dilution**

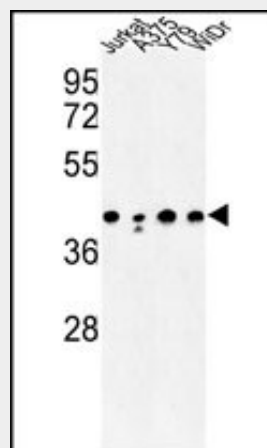
WB~~1:1000  
FC~~1:10~50

**Format**

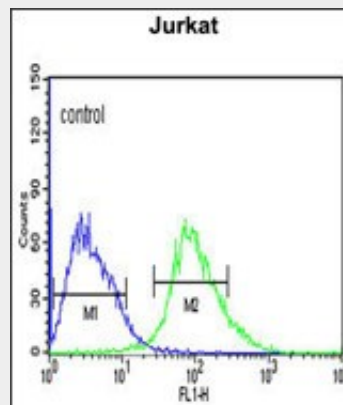
Purified polyclonal antibody supplied in PBS with 0.09% (W/V) sodium azide. This antibody is purified through a protein A column, followed by peptide affinity purification.

**Storage**

Maintain refrigerated at 2-8°C for up to 2 weeks. For long term storage store at -20°C in small aliquots to prevent freeze-thaw cycles.



Western blot analysis of CANT1 Antibody (N-term) (Cat. #AP8822a) in Jurkat, A375, Y79, WiDr cell line lysates (35ug/lane). CANT1 (arrow) was detected using the purified Pab.



CANT1 Antibody (N-term) (Cat. #AP8822a) flow cytometric analysis of Jurkat cells (right histogram) compared to a negative control cell (left histogram). FITC-conjugated goat-anti-rabbit secondary antibodies were used for the analysis.

**CANT1 Antibody (N-term) - Background**

CANT1 belongs to the apyrase family. It functions as a calcium-dependent nucleotidase with a preference for UDP.

**Precautions**

CANT1 Antibody (N-term) is for research use only and not for use in diagnostic or therapeutic procedures.

**CANT1 Antibody (N-term) - References**

Dai,J., et.al., Cell 116 (5), 649-659 (2004)

**CANT1 Antibody (N-term) - Protein Information**

**Name** CANT1

**Synonyms** SHAPY

**Function**

Calcium-dependent nucleotidase with a preference for UDP. The order of activity with different substrates is UDP > GDP > UTP > GTP. Has very low activity towards ADP and even lower activity towards ATP. Does not hydrolyze AMP and GMP (PubMed:<a href="http://www.uniprot.org/citations/12234496" target="\_blank">12234496</a>, PubMed:<a href="http://www.uniprot.org/citations/15248776" target="\_blank">15248776</a>, PubMed:<a href="http://www.uniprot.org/citations/15006348" target="\_blank">15006348</a>, PubMed:<a href="http://www.uniprot.org/citations/16835225" target="\_blank">16835225</a>). Involved in proteoglycan synthesis (PubMed:<a href="http://www.uniprot.org/citations/22539336" target="\_blank">22539336</a>).

**Cellular Location**

Endoplasmic reticulum membrane; Single-pass type II membrane protein. Golgi apparatus, Golgi stack membrane; Single-pass type II membrane protein. Cell membrane. Note=Processed form: Secreted

**Tissue Location**

Widely expressed..

**CANT1 Antibody (N-term) - Protocols**

Provided below are standard protocols that you may find useful for product applications.

- [Western Blot](#)
- [Blocking Peptides](#)
- [Dot Blot](#)
- [Immunohistochemistry](#)
- [Immunofluorescence](#)

- [Immunoprecipitation](#)
- [Flow Cytometry](#)
- [Cell Culture](#)