

OLR1 Antibody (Center)
Affinity Purified Rabbit Polyclonal Antibody (Pab)
Catalog # AP8849c

Specification

OLR1 Antibody (Center) - Product Information

Application	WB, IHC-P,E
Primary Accession	P78380
Reactivity	Human
Host	Rabbit
Clonality	Polyclonal
Isotype	Rabbit Ig
Calculated MW	30959
Antigen Region	64-92

OLR1 Antibody (Center) - Additional Information

Gene ID 4973

Other Names

Oxidized low-density lipoprotein receptor 1, Ox-LDL receptor 1, C-type lectin domain family 8 member A, Lectin-like oxidized LDL receptor 1, LOX-1, Lectin-like oxLDL receptor 1, hLOX-1, Lectin-type oxidized LDL receptor 1, Oxidized low-density lipoprotein receptor 1, soluble form, OLR1, CLEC8A, LOX1

Target/Specificity

This OLR1 antibody is generated from rabbits immunized with a KLH conjugated synthetic peptide between 64-92 amino acids from the Central region of human OLR1.

Dilution

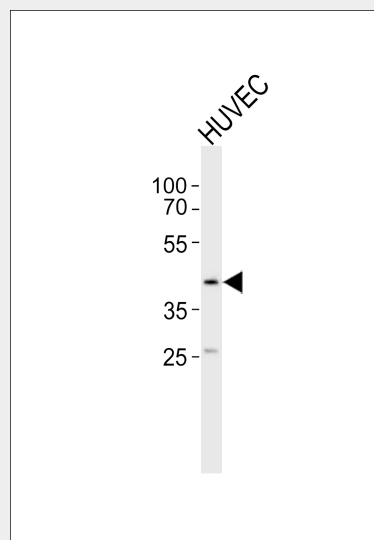
WB~~1:1000
IHC-P~~1:10~50

Format

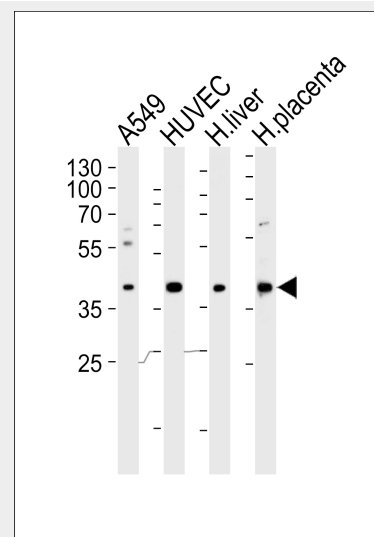
Purified polyclonal antibody supplied in PBS with 0.09% (W/V) sodium azide. This antibody is purified through a protein A column, followed by peptide affinity purification.

Storage

Maintain refrigerated at 2-8°C for up to 2 weeks. For long term storage store at -20°C in small aliquots to prevent freeze-thaw



Western blot analysis of lysate from HUVEC cell line, using OLR1 Antibody (Center)(Cat. #AP8849c). AP8849c was diluted at 1:1000. A goat anti-rabbit IgG H&L(HRP) at 1:5000 dilution was used as the secondary antibody. Lysate at 35ug.



Western blot analysis of lysates from A549, HUVEC cell line and human liver, placenta tissue lysate(from left to right), using OLR1 Antibody (Center)(Cat. #AP8849c). AP8849c was diluted at 1:1000 at each lane. A goat

cycles.

Precautions

OLR1 Antibody (Center) is for research use only and not for use in diagnostic or therapeutic procedures.

OLR1 Antibody (Center) - Protein Information

Name OLR1

Synonyms CLEC8A, LOX1

Function

Receptor that mediates the recognition, internalization and degradation of oxidatively modified low density lipoprotein (oxLDL) by vascular endothelial cells. OxLDL is a marker of atherosclerosis that induces vascular endothelial cell activation and dysfunction, resulting in pro-inflammatory responses, pro-oxidative conditions and apoptosis. Its association with oxLDL induces the activation of NF-kappa-B through an increased production of intracellular reactive oxygen and a variety of pro-atherogenic cellular responses including a reduction of nitric oxide (NO) release, monocyte adhesion and apoptosis. In addition to binding oxLDL, it acts as a receptor for the HSP70 protein involved in antigen cross-presentation to naive T-cells in dendritic cells, thereby participating in cell-mediated antigen cross-presentation. Also involved in inflammatory process, by acting as a leukocyte-adhesion molecule at the vascular interface in endotoxin-induced inflammation. Also acts as a receptor for advanced glycation end (AGE) products, activated platelets, monocytes, apoptotic cells and both Gram-negative and Gram-positive bacteria.

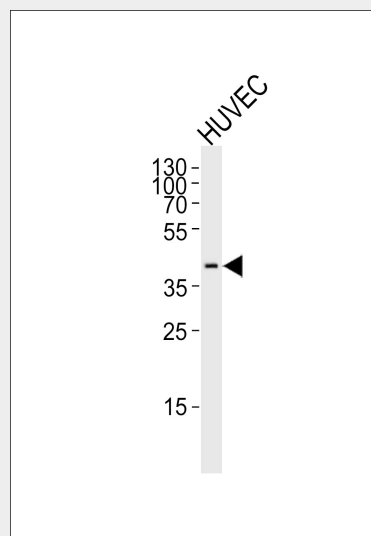
Cellular Location

Cell membrane; Lipid-anchor. Cell membrane; Single-pass type II membrane protein. Membrane raft. Secreted. Note=A secreted form also exists. Localization to membrane rafts requires palmitoylation

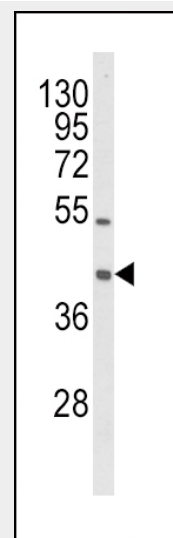
Tissue Location

Expressed at high level in endothelial cells and vascular-rich organs such as placenta, lung, liver and brain, aortic intima, bone marrow, spinal cord and substantia nigra. Also expressed at the surface of dendritic

anti-rabbit IgG H&L(HRP) at 1:5000 dilution was used as the secondary antibody. Lysates at 35ug per lane.



Western blot analysis of lysate from HUVEC cell line, using OLR1 Antibody (Center)(Cat. #AP8849c). AP8849c was diluted at 1:1000. A goat anti-rabbit IgG H&L(HRP) at 1:5000 dilution was used as the secondary antibody. Lysate at 35ug.



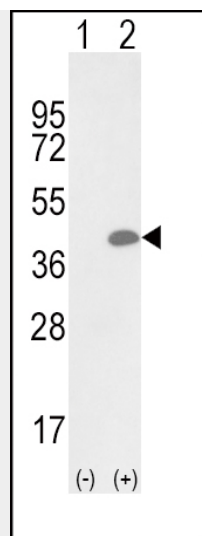
Western blot analysis of OLR1 Antibody (Center) (Cat. #AP8849c) in HL-60 cell line lysates (35ug/lane). OLR1 (arrow) was detected using the purified Pab.

cells. Widely expressed at intermediate and low level.

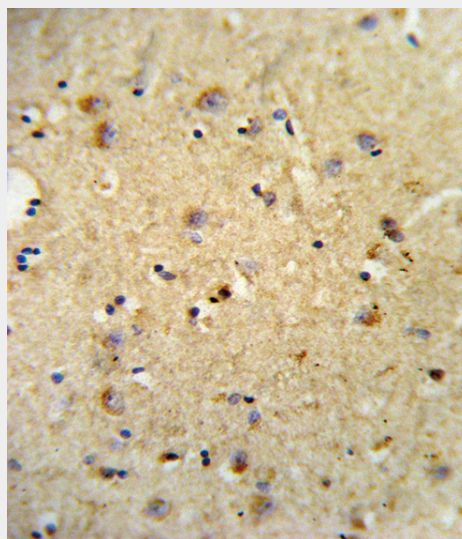
OLR1 Antibody (Center) - Protocols

Provided below are standard protocols that you may find useful for product applications.

- [Western Blot](#)
- [Blocking Peptides](#)
- [Dot Blot](#)
- [Immunohistochemistry](#)
- [Immunofluorescence](#)
- [Immunoprecipitation](#)
- [Flow Cytometry](#)
- [Cell Culture](#)



Western blot analysis of OLR1 (arrow) using rabbit polyclonal OLR1 Antibody (Center) (Cat. #AP8849c). 293 cell lysates (2 ug/lane) either nontransfected (Lane 1) or transiently transfected with the OLR1 gene (Lane 2) .



Formalin-fixed and paraffin-embedded human brain tissue reacted with OLR1 Antibody (Center), which was peroxidase-conjugated to the secondary antibody, followed by DAB staining. This data demonstrates the use of this antibody for immunohistochemistry; clinical relevance has not been evaluated.

OLR1 Antibody (Center) - Background

OLR1 is a low density lipoprotein receptor that belongs to the C-type lectin superfamily. This protein binds, internalizes and degrades oxidized low-density lipoprotein. This protein

may be involved in the regulation of Fas-induced apoptosis. This protein may play a role as a scavenger receptor.

OLR1 Antibody (Center) - References

Predazzi, I.M., et.al., Ann. Hum. Biol. 37 (2), 136-148 (2010)