

**CASD1 Antibody (N-term)**  
**Affinity Purified Rabbit Polyclonal Antibody (Pab)**  
**Catalog # AP8857a**

**Specification**

**CASD1 Antibody (N-term) - Product Information**

Application	<b>WB, FC,E</b>
Primary Accession	<a href="#">Q96PB1</a>
Other Accession	<a href="#">Q7TN73</a>
Reactivity	<b>Human, Mouse</b>
Host	<b>Rabbit</b>
Clonality	<b>Polyclonal</b>
Isotype	<b>Rabbit IgG</b>
Antigen Region	<b>97-126</b>

**CASD1 Antibody (N-term) - Additional Information**

**Gene ID** 64921

**Other Names**

CAS1 domain-containing protein 1, CASD1, C7orf12

**Target/Specificity**

This CASD1 antibody is generated from rabbits immunized with a KLH conjugated synthetic peptide between 97-126 amino acids from the N-terminal region of human CASD1.

**Dilution**

WB~~1:1000  
FC~~1:10~50

**Format**

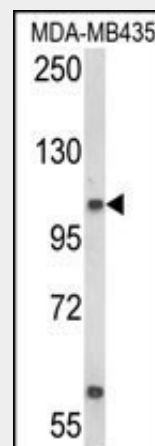
Purified polyclonal antibody supplied in PBS with 0.09% (W/V) sodium azide. This antibody is purified through a protein A column, followed by peptide affinity purification.

**Storage**

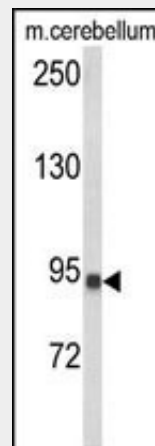
Maintain refrigerated at 2-8°C for up to 2 weeks. For long term storage store at -20°C in small aliquots to prevent freeze-thaw cycles.

**Precautions**

CASD1 Antibody (N-term) is for research use only and not for use in diagnostic or



Western blot analysis of CASD1 Antibody (N-term) (Cat. #AP8857a) in MDA-MB435 cell line lysates (35ug/lane). CASD1 (arrow) was detected using the purified Pab.



Western blot analysis of CASD1 Antibody (N-term) (Cat. #AP8857a) in mouse cerebellum tissue lysates (35ug/lane). CASD1 (arrow) was detected using the purified Pab.

therapeutic procedures.

#### CASD1 Antibody (N-term) - Protein Information

**Name** CASD1 ([HGNC:16014](#))

**Synonyms** C7orf12

#### Function

O-acetyltransferase that catalyzes 9-O-acetylation of sialic acids (PubMed:<a href="http://www.uniprot.org/citations/20947662" target="\_blank">20947662</a>, PubMed:<a href="http://www.uniprot.org/citations/26169044" target="\_blank">26169044</a>). Sialic acids are sugars at the reducing end of glycoproteins and glycolipids, and are involved in various processes such as cell-cell interactions, host-pathogen recognition (PubMed:<a href="http://www.uniprot.org/citations/20947662" target="\_blank">20947662</a>, PubMed:<a href="http://www.uniprot.org/citations/26169044" target="\_blank">26169044</a>).

#### Cellular Location

Golgi apparatus membrane; Multi-pass membrane protein

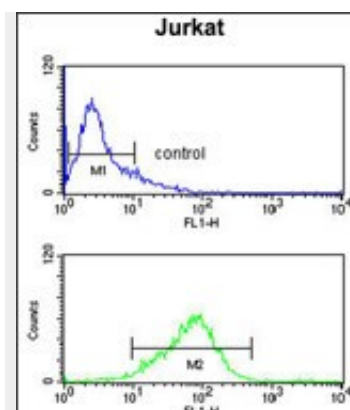
#### Tissue Location

Highly expressed in peripheral B lymphocytes.

#### CASD1 Antibody (N-term) - Protocols

Provided below are standard protocols that you may find useful for product applications.

- [Western Blot](#)
- [Blocking Peptides](#)
- [Dot Blot](#)
- [Immunohistochemistry](#)
- [Immunofluorescence](#)
- [Immunoprecipitation](#)
- [Flow Cytometry](#)
- [Cell Culture](#)



CASD1 Antibody (N-term) (Cat. #AP8857a) flow cytometry analysis of Jurkat cells (bottom histogram) compared to a negative control cell (top histogram). FITC-conjugated goat-anti-rabbit secondary antibodies were used for the analysis.

#### CASD1 Antibody (N-term) - References

Janbon, G., et al., Mol. Microbiol. 42 (2), 453-467 (2001)