

RPGRIP1 Antibody (Center)
Affinity Purified Rabbit Polyclonal Antibody (Pab)
Catalog # AP8871c

Specification

RPGRIP1 Antibody (Center) - Product Information

Application	WB, IHC-P, FC,E
Primary Accession	Q96KN7
Other Accession	NP_065099
Reactivity	Human
Host	Rabbit
Clonality	Polyclonal
Isotype	Rabbit Ig
Calculated MW	146682
Antigen Region	530-557

RPGRIP1 Antibody (Center) - Additional Information

Gene ID 57096

Other Names

X-linked retinitis pigmentosa GTPase regulator-interacting protein 1, RPGR-interacting protein 1, RPGRIP1

Target/Specificity

This RPGRIP1 antibody is generated from rabbits immunized with a KLH conjugated synthetic peptide between 530-557 amino acids from the Central region of human RPGRIP1.

Dilution

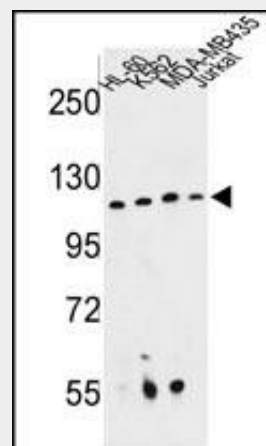
WB~~1:1000
IHC-P~~1:50~100
FC~~1:10~50

Format

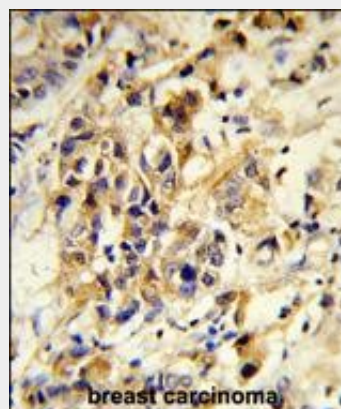
Purified polyclonal antibody supplied in PBS with 0.09% (W/V) sodium azide. This antibody is purified through a protein A column, followed by peptide affinity purification.

Storage

Maintain refrigerated at 2-8°C for up to 2 weeks. For long term storage store at -20°C in small aliquots to prevent freeze-thaw cycles.



Western blot analysis of RPGRIP1 Antibody (Center) (Cat. #AP8871c) in HL-60, K562, MDA-MB435, Jurkat cell line lysates (35ug/lane). RPGRIP1 (arrow) was detected using the purified Pab.



Formalin-fixed and paraffin-embedded human breast carcinoma reacted with RPGRIP1 Antibody (Center), which was peroxidase-conjugated to the secondary antibody, followed by DAB staining. This data demonstrates the use of this antibody for immunohistochemistry; clinical relevance has not been evaluated.

Precautions

RPGRIP1 Antibody (Center) is for research use only and not for use in diagnostic or therapeutic procedures.

RPGRIP1 Antibody (Center) - Protein Information

Name RPGRIP1

Function

May function as scaffolding protein. Required for normal location of RPGR at the connecting cilium of photoreceptor cells. Required for normal disk morphogenesis and disk organization in the outer segment of photoreceptor cells and for survival of photoreceptor cells.

Cellular Location

Cell projection, cilium. Note=Situated between the axonemal microtubules and the plasma membrane (By similarity). In the retinal photoreceptor cell layer, localizes at the connecting cilium, a thin bridge linking the cell body and the light-sensing outer segment (By similarity). Colocalizes with RGPR in the photoreceptor connecting cilium (By similarity).
{ECO:0000250|UniProtKB:Q9EPQ2}

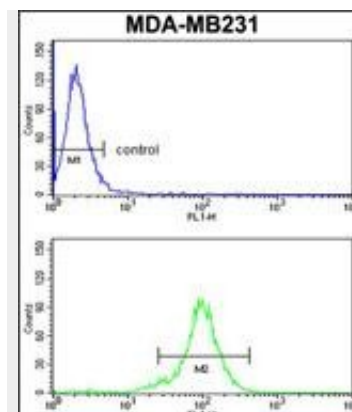
Tissue Location

Strong expression in retina, with weaker expression in testis. Expressed in other neurons such as amacrine cells Colocalizes with RGPR in the outer segment of rod photoreceptors and cone outer segments.

RPGRIP1 Antibody (Center) - Protocols

Provided below are standard protocols that you may find useful for product applications.

- [Western Blot](#)
- [Blocking Peptides](#)
- [Dot Blot](#)
- [Immunohistochemistry](#)
- [Immunofluorescence](#)
- [Immunoprecipitation](#)
- [Flow Cytometry](#)
- [Cell Culture](#)



RPGRIP1 Antibody (Center) (Cat.#AP8871c) flow cytometry analysis of MDA-MB231 cells (bottom histogram) compared to a negative control cell (top histogram). FITC-conjugated goat-anti-rabbit secondary antibodies were used for the analysis.

RPGRIP1 Antibody (Center) - Background

RPGRIP1 is a photoreceptor protein that interacts with retinitis pigmentosa GTPase regulator protein and is a key component of cone and rod photoreceptor cells.

RPGRIP1 Antibody (Center) - References

Arts,H.H.,et.al., Nat. Genet. 39 (7), 882-888 (2007)