

**TRIB2 Antibody (N-term)**  
**Affinity Purified Rabbit Polyclonal Antibody (Pab)**  
**Catalog # AP8930a**

**Specification**

**TRIB2 Antibody (N-term) - Product Information**

Application	WB, IHC-P, FC,E
Primary Accession	<a href="#">Q92519</a>
Other Accession	<a href="#">Q8K4K3</a> , <a href="#">Q5GLH2</a> , <a href="#">NP_067675</a>
Reactivity	Human
Predicted	Bovine, Mouse
Host	Rabbit
Clonality	Polyclonal
Isotype	Rabbit Ig
Calculated MW	38801
Antigen Region	1-30

**TRIB2 Antibody (N-term) - Additional Information**

**Gene ID** 28951

**Other Names**

Tribbles homolog 2, TRB-2, TRIB2 (<a href="http://www.genenames.org/cgi-bin/gene\_symbol\_report?hgnc\_id=30809" target="\_blank">HGNC:30809</a>)

**Target/Specificity**

This TRIB2 antibody is generated from rabbits immunized with a KLH conjugated synthetic peptide between 1-30 amino acids from the N-terminal region of human TRIB2.

**Dilution**

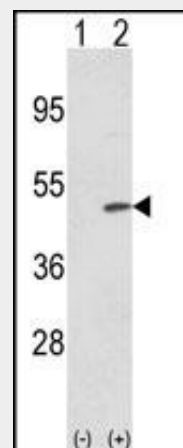
WB~~1:1000  
IHC-P~~1:50~100  
FC~~1:10~50

**Format**

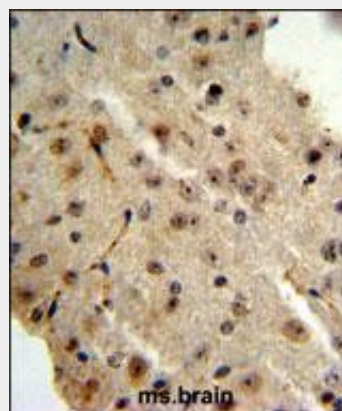
Purified polyclonal antibody supplied in PBS with 0.09% (W/V) sodium azide. This antibody is prepared by Saturated Ammonium Sulfate (SAS) precipitation followed by dialysis against PBS.

**Storage**

Maintain refrigerated at 2-8°C for up to 2 weeks. For long term storage store at -20°C in small aliquots to prevent freeze-thaw cycles.



Western blot analysis of TRIB2 (arrow) using rabbit polyclonal TRIB2 N-term (Cat. #AP8930a). 293 cell lysates (2 ug/lane) either nontransfected (Lane 1) or transiently transfected with the TRIB2 gene (Lane 2) .



TRIB2 Antibody (N-term) (Cat. #AP8930a) IHC analysis in formalin fixed and paraffin embedded mouse brain followed by peroxidase conjugation of the secondary antibody and DAB staining. This data demonstrates the use of the TRIB2 Antibody (N-term) for immunohistochemistry. Clinical relevance has not been evaluated.

### Precautions

TRIB2 Antibody (N-term) is for research use only and not for use in diagnostic or therapeutic procedures.

### TRIB2 Antibody (N-term) - Protein Information

**Name** TRIB2 ([HGNC:30809](#))

### Function

Interacts with MAPK kinases and regulates activation of MAP kinases. Does not display kinase activity (By similarity).

### Cellular Location

Cytoplasm. Cytoplasm, cytoskeleton.  
Note=May associate with the cytoskeleton.

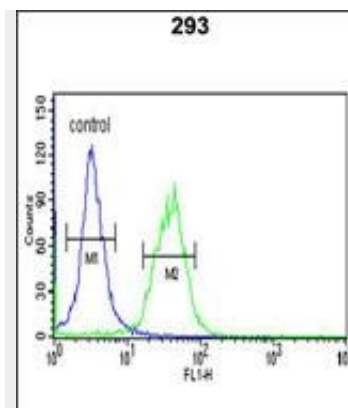
### Tissue Location

Highly expressed in peripheral blood leukocytes.

### TRIB2 Antibody (N-term) - Protocols

Provided below are standard protocols that you may find useful for product applications.

- [Western Blot](#)
- [Blocking Peptides](#)
- [Dot Blot](#)
- [Immunohistochemistry](#)
- [Immunofluorescence](#)
- [Immunoprecipitation](#)
- [Flow Cytometry](#)
- [Cell Culture](#)



TRIB2 Antibody (N-term) (Cat. #AP8930a) flow cytometric analysis of 293 cells (right histogram) compared to a negative control cell (left histogram). FITC-conjugated goat-anti-rabbit secondary antibodies were used for the analysis.

### TRIB2 Antibody (N-term) - Background

TRIB2 is one of three members of the Tribbles family. The Tribbles members share a Trb domain, which is homologous to protein serine-threonine kinases, but lacks the active site lysine and probably lacks a catalytic function. The Tribbles proteins interact and modulate the activity of signal transduction pathways in a number of physiological and pathological processes. This Tribbles member induces apoptosis of cells mainly of the hematopoietic origin. It has been identified as a protein up-regulated by inflammatory stimuli in myeloid (THP-1) cells, and also as an oncogene that inactivates the transcription factor C/EBPalpha (CCAAT/enhancer-binding protein alpha) and causes acute myelogenous leukemia.

### TRIB2 Antibody (N-term) - References

Hegele, R.A., et.al., Hum. Mol. Genet. 18 (21), 4189-4194 (2009)  
Eder, K., et.al., Int. Immunol. 20 (12), 1543-1550 (2008)