

CLIP1 Antibody (N-term)
Affinity Purified Rabbit Polyclonal Antibody (Pab)
Catalog # AP8950a

Specification

CLIP1 Antibody (N-term) - Product Information

Application	WB, IHC-P, FC,E
Primary Accession	P30622
Other Accession	O55156 , O9Z0H8 , O9UDT6 , O922J3 , O42184 , O9JK25
Reactivity Predicted	Human Chicken, Mouse, Rat
Host	Rabbit
Clonality	Polyclonal
Isotype	Rabbit Ig
Calculated MW	162246
Antigen Region	228-254

CLIP1 Antibody (N-term) - Additional Information

Gene ID 6249

Other Names

CAP-Gly domain-containing linker protein 1,
Cytoplasmic linker protein 1, Cytoplasmic
linker protein 170 alpha-2, CLIP-170,
Reed-Sternberg intermediate
filament-associated protein, Restin, CLIP1,
CYLN1, RSN

Target/Specificity

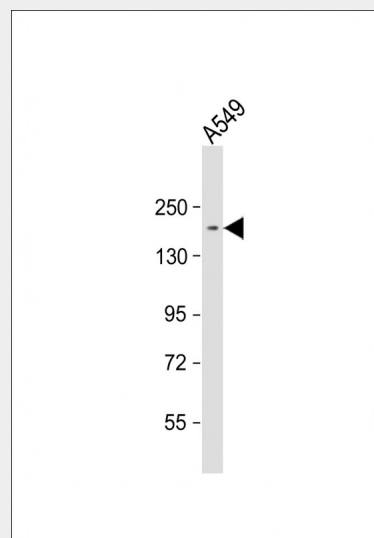
This CLIP1 antibody is generated from
rabbits immunized with a KLH conjugated
synthetic peptide between 228-254 amino
acids from the N-terminal region of human
CLIP1.

Dilution

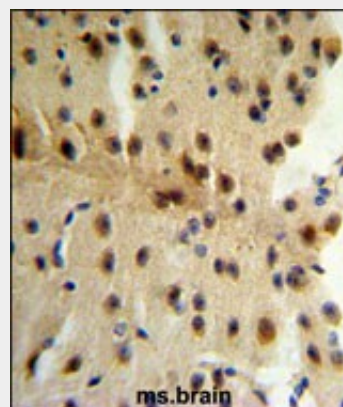
WB~~1:1000
IHC-P~~1:50~100
FC~~1:10~50

Format

Purified polyclonal antibody supplied in PBS
with 0.09% (W/V) sodium azide. This
antibody is purified through a protein A
column, followed by peptide affinity
purification.



Anti-CLIP1 Antibody (N-term) at 1:1000
dilution + A549 whole cell lysate
Lysates/proteins at 20 µg per lane.
Secondary Goat Anti-Rabbit IgG, (H+L),
Peroxidase conjugated at 1/10000 dilution.
Predicted band size : 162 kDa
Blocking/Dilution buffer: 5% NFDM/TBST.



CLIP1 Antibody (N-term) (Cat. #AP8950a)
IHC analysis in formalin fixed and paraffin
embedded mouse brain tissue followed by
peroxidase conjugation of the secondary
antibody and DAB staining. This data
demonstrates the use of the CLIP1 Antibody
(N-term) for immunohistochemistry. Clinical
relevance has not been evaluated.

Storage

Maintain refrigerated at 2-8°C for up to 2 weeks. For long term storage store at -20°C in small aliquots to prevent freeze-thaw cycles.

Precautions

CLIP1 Antibody (N-term) is for research use only and not for use in diagnostic or therapeutic procedures.

CLIP1 Antibody (N-term) - Protein Information

Name CLIP1

Synonyms CYLN1, RSN

Function

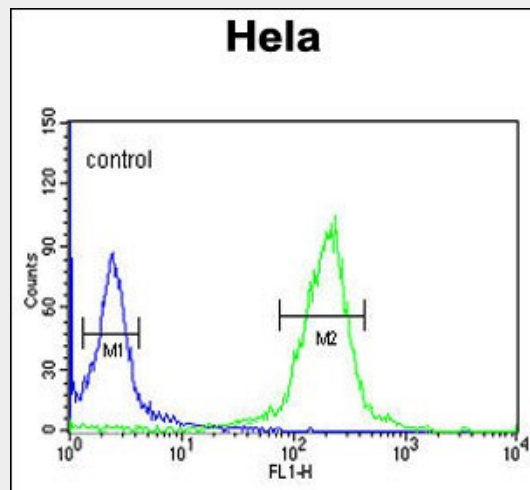
Binds to the plus end of microtubules and regulates the dynamics of the microtubule cytoskeleton. Promotes microtubule growth and microtubule bundling. Links cytoplasmic vesicles to microtubules and thereby plays an important role in intracellular vesicle trafficking. Plays a role macropinocytosis and endosome trafficking.

Cellular Location

Cytoplasm. Cytoplasm, cytoskeleton. Cytoplasmic vesicle membrane; Peripheral membrane protein; Cytoplasmic side. Cell projection, ruffle. Note=Localizes to microtubule plus ends (PubMed:21646404, PubMed:17889670). Localizes preferentially to the ends of tyrosinated microtubules (By similarity). Accumulates in plasma membrane regions with ruffling and protrusions. Associates with the membranes of intermediate macropinocytic vesicles (PubMed:12433698) {ECO:0000250|UniProtKB:Q922J3, ECO:0000269|PubMed:12433698, ECO:0000269|PubMed:17889670, ECO:0000269|PubMed:21646404}

Tissue Location

Detected in dendritic cells (at protein level). Highly expressed in the Reed-Sternberg cells of Hodgkin disease



CLIP1 Antibody (N-term) (Cat. #AP8950a) flow cytometric analysis of HeLa cells (right histogram) compared to a negative control cell (left histogram). FITC-conjugated goat-anti-rabbit secondary antibodies were used for the analysis.

CLIP1 Antibody (N-term) - Background

CLIP1 may be an intermediate filament associated protein that links endocytic vesicles to microtubules.

CLIP1 Antibody (N-term) - References

Yang, X., et al., J. Biol. Chem. 284 (42), 28775-28782 (2009)
Meunier, B., et al., Eur. J. Cell Biol. 88 (2), 91-102 (2009)

CLIP1 Antibody (N-term) - Protocols

Provided below are standard protocols that you may find useful for product applications.

- [Western Blot](#)
- [Blocking Peptides](#)
- [Dot Blot](#)
- [Immunohistochemistry](#)
- [Immunofluorescence](#)
- [Immunoprecipitation](#)
- [Flow Cytometry](#)
- [Cell Culture](#)