

**LY75 Antibody (Center)**  
**Affinity Purified Rabbit Polyclonal Antibody (Pab)**  
**Catalog # AP8994c**

**Specification**

**LY75 Antibody (Center) - Product Information**

Application	<b>WB, IHC-P, FC,E</b>
Primary Accession	<a href="#">O60449</a>
Reactivity	<b>Human</b>
Host	<b>Rabbit</b>
Clonality	<b>Polyclonal</b>
Isotype	<b>Rabbit Ig</b>
Calculated MW	<b>198311</b>
Antigen Region	<b>646-675</b>

**LY75 Antibody (Center) - Additional Information**

**Gene ID** 100526664;4065

**Other Names**

Lymphocyte antigen 75, Ly-75, C-type lectin domain family 13 member B, DEC-205, gp200-MR6, CD205, LY75, CD205, CLEC13B

**Target/Specificity**

This LY75 antibody is generated from rabbits immunized with a KLH conjugated synthetic peptide between 646-675 amino acids from the Central region of human LY75.

**Dilution**

WB~~1:1000  
IHC-P~~1:50~100  
FC~~1:10~50

**Format**

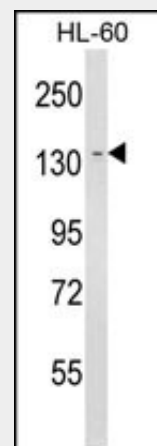
Purified polyclonal antibody supplied in PBS with 0.09% (W/V) sodium azide. This antibody is purified through a protein A column, followed by peptide affinity purification.

**Storage**

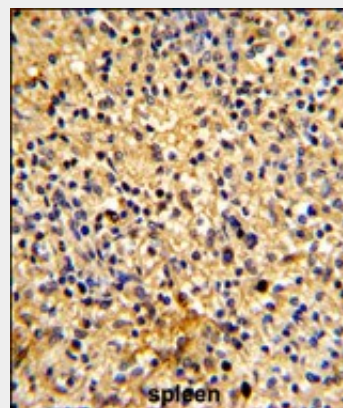
Maintain refrigerated at 2-8°C for up to 2 weeks. For long term storage store at -20°C in small aliquots to prevent freeze-thaw cycles.

**Precautions**

LY75 Antibody (Center) is for research use



Western blot analysis of LY75 Antibody (Center) (Cat. #AP8994c) in HL-60 cell line lysates (35ug/lane). LY75 (arrow) was detected using the purified Pab.



Formalin-fixed and paraffin-embedded human spleen tissue reacted with LY75 Antibody (Center), which was peroxidase-conjugated to the secondary antibody, followed by DAB staining. This data demonstrates the use of this antibody for immunohistochemistry; clinical relevance has not been evaluated.

only and not for use in diagnostic or therapeutic procedures.

#### LY75 Antibody (Center) - Protein Information

**Name** LY75

**Synonyms** CD205, CLEC13B

#### Function

Acts as an endocytic receptor to direct captured antigens from the extracellular space to a specialized antigen-processing compartment (By similarity). Causes reduced proliferation of B- lymphocytes.

#### Cellular Location

Membrane; Single-pass type I membrane protein

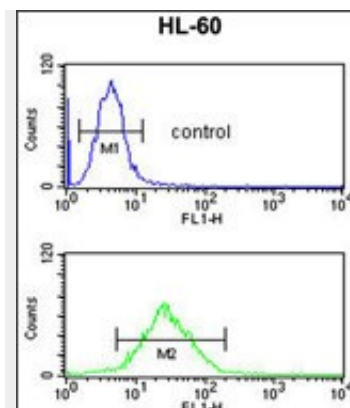
#### Tissue Location

Expressed in spleen, thymus, colon and peripheral blood lymphocytes. Detected in myeloid and B-lymphoid cell lines Isoform 2 and isoform 3 are expressed in malignant Hodgkin lymphoma cells called Hodgkin and Reed-Sternberg (HRS) cells

#### LY75 Antibody (Center) - Protocols

Provided below are standard protocols that you may find useful for product applications.

- [Western Blot](#)
- [Blocking Peptides](#)
- [Dot Blot](#)
- [Immunohistochemistry](#)
- [Immunofluorescence](#)
- [Immunoprecipitation](#)
- [Flow Cytometry](#)
- [Cell Culture](#)



LY75 Antibody (Center) (Cat. #AP8994c) flow cytometric analysis of HL-60 cells (bottom histogram) compared to a negative control cell (top histogram). FITC-conjugated goat-anti-rabbit secondary antibodies were used for the analysis.

#### LY75 Antibody (Center) - Background

LY75 acts as an endocytic receptor to direct captured antigens from the extracellular space to a specialized antigen-processing compartment. It causes reduced proliferation of B-lymphocytes.

#### LY75 Antibody (Center) - References

Kato, M., et al., Immunogenetics 47 (6), 442-450 (1998)  
 McKay, P.F., et al., Eur. J. Immunol. 28 (12), 4071-4083 (1998)