

ITGA2 Antibody (C-term)
Affinity Purified Rabbit Polyclonal Antibody (Pab)
Catalog # AP9051b

Specification

ITGA2 Antibody (C-term) - Product Information

| | |
|-------------------|------------------------|
| Application | WB,E |
| Primary Accession | P17301 |
| Reactivity | Human |
| Host | Rabbit |
| Clonality | Polyclonal |
| Isotype | Rabbit Ig |
| Calculated MW | 129295 |
| Antigen Region | 1023-1049 |

ITGA2 Antibody (C-term) - Additional Information

Gene ID 3673

Other Names

Integrin alpha-2, CD49 antigen-like family member B, Collagen receptor, Platelet membrane glycoprotein Ia, GPIa, VLA-2 subunit alpha, CD49b, ITGA2, CD49B

Target/Specificity

This ITGA2 antibody is generated from rabbits immunized with a KLH conjugated synthetic peptide between 1023-1049 amino acids from the C-terminal region of human ITGA2.

Dilution

WB~~1:1000

Format

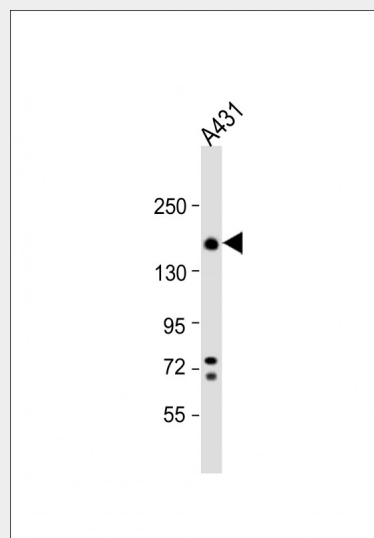
Purified polyclonal antibody supplied in PBS with 0.09% (W/V) sodium azide. This antibody is purified through a protein A column, followed by peptide affinity purification.

Storage

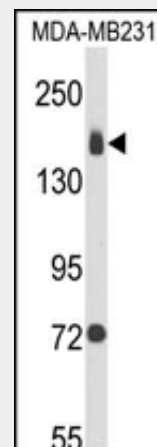
Maintain refrigerated at 2-8°C for up to 2 weeks. For long term storage store at -20°C in small aliquots to prevent freeze-thaw cycles.

Precautions

ITGA2 Antibody (C-term) is for research use only and not for use in diagnostic or



Anti-ITGA2 Antibody (C-term) at 1:1000 dilution + A431 whole cell lysate
Lysates/proteins at 20 µg per lane.
Secondary Goat Anti-Rabbit IgG, (H+L), Peroxidase conjugated at 1/10000 dilution.
Predicted band size : 129 kDa
Blocking/Dilution buffer: 5% NFDM/TBST.



Western blot analysis of ITGA2 Antibody (C-term) (Cat. #AP9051b) in MDA-MB231 cell line lysates (35ug/lane). ITGA2 (arrow) was detected using the purified Pab.

ITGA2 Antibody (C-term) - Background

therapeutic procedures.

ITGA2 Antibody (C-term) - Protein Information

Name ITGA2

Synonyms CD49B

Function

Integrin alpha-2/beta-1 is a receptor for laminin, collagen, collagen C-propeptides, fibronectin and E-cadherin. It recognizes the proline-hydroxylated sequence G-F-P-G-E-R in collagen. It is responsible for adhesion of platelets and other cells to collagens, modulation of collagen and collagenase gene expression, force generation and organization of newly synthesized extracellular matrix. (Microbial infection) Integrin ITGA2:ITGB1 acts as a receptor for Human echoviruses 1 and 8.

Cellular Location

Membrane; Single-pass type I membrane protein.

ITGA2 is a protein that belongs to the integrin alpha chain family. Integrins are heterodimeric integral membrane glycoproteins composed of a distinct alpha chain and a common beta chain. They are found on a wide variety of cell types including, T cells, fibroblasts and platelets. Integrins are involved in cell adhesion and also participate in cell-surface mediated signalling.

ITGA2 Antibody (C-term) - References

Ye, F., Hu, G., et.al., J. Cell Biol. 188 (1), 157-173 (2010)
Jokinen, J., et.al., EMBO J. 29 (1), 196-208 (2010)

ITGA2 Antibody (C-term) - Protocols

Provided below are standard protocols that you may find useful for product applications.

- [Western Blot](#)
- [Blocking Peptides](#)
- [Dot Blot](#)
- [Immunohistochemistry](#)
- [Immunofluorescence](#)
- [Immunoprecipitation](#)
- [Flow Cytometry](#)
- [Cell Culture](#)